

Product Datasheet

WC1(+) gamma delta T cell Antibody (CACT21A) NBP2-61083

Unit Size: 0.1 mg

Store at 4C short term. Aliquot and store at -20C long term. Avoid freeze-thaw cycles.

www.novusbio.com



technical@novusbio.com

Protocols, Publications, Related Products, Reviews, Research Tools and Images at:
www.novusbio.com/NBP2-61083

Updated 10/23/2024 v.20.1

Earn rewards for product
reviews and publications.

Submit a publication at www.novusbio.com/publications

Submit a review at www.novusbio.com/reviews/destination/NBP2-61083



NBP2-61083**WC1(+) gamma delta T cell Antibody (CACT21A)**

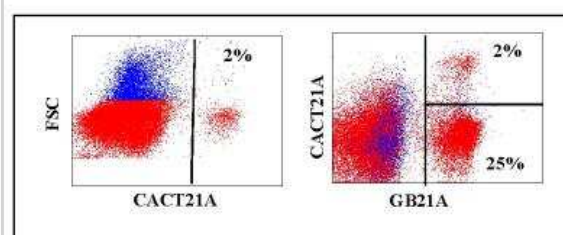
| Product Information | |
|----------------------------|--|
| Unit Size | 0.1 mg |
| Concentration | This product is unpurified. The exact concentration of antibody is not quantifiable. |
| Storage | Store at 4C short term. Aliquot and store at -20C long term. Avoid freeze-thaw cycles. |
| Clonality | Monoclonal |
| Clone | CACT21A |
| Preservative | 0.09% Sodium Azide |
| Isotype | IgG1 |
| Purity | Unpurified |
| Buffer | Ascites |

| Product Description | |
|----------------------------|---|
| Description | This monoclonal antibody is made in ascites form using mice. The ascites is collected and centrifuged to remove cells and large particles. The ascitic fluid is purified further by filtration through sequential filters with the last filter at 2 um. The concentration of the monoclonal antibody present in the ascites is determined with commercial radial immunodiffusion kits (1mg/ml). |
| Host | Mouse |
| Species | Bovine |
| Immunogen | Bovine ConA stimulated mononuclear leukocytes |
| Notes | This monoclonal antibody is made in ascites form using mice. The ascites is collected and centrifuged to remove cells and large particles. The ascitic fluid is purified further by filtration through sequential filters with the last filter at 2 um. The concentration of the monoclonal antibody present in the ascites is determined with commercial radial immunodiffusion kits (1mg/ml). |

| Product Application Details | |
|------------------------------------|------------------------------|
| Applications | Flow Cytometry |
| Recommended Dilutions | Flow Cytometry 1:10 - 1:1000 |

Images

Flow Cytometry: WC1(+) gamma delta T cell Antibody (CACT21A) [NBP2-61083] - Obtained with bovine leukocytes. GB21A recognizes TCR1-delta chain. CACT21A recognizes a subset of WC1+ gamma-delta T cells.





Novus Biologicals USA

10730 E. Briarwood Avenue
Centennial, CO 80112
USA
Phone: 303.730.1950
Toll Free: 1.888.506.6887
Fax: 303.730.1966
nb-customerservice@bio-techne.com

Bio-Techne Canada

21 Canmotor Ave
Toronto, ON M8Z 4E6
Canada
Phone: 905.827.6400
Toll Free: 855.668.8722
Fax: 905.827.6402
canada.inquires@bio-techne.com

Bio-Techne Ltd

19 Barton Lane
Abingdon Science Park
Abingdon, OX14 3NB, United Kingdom
Phone: (44) (0) 1235 529449
Free Phone: 0800 37 34 15
Fax: (44) (0) 1235 533420
info.EMEA@bio-techne.com

General Contact Information

www.novusbio.com
Technical Support: nb-technical@bio-techne.com
Orders: nb-customerservice@bio-techne.com
General: novus@novusbio.com

Products Related to NBP2-61083

| | |
|------------------|---|
| HAF007 | Goat anti-Mouse IgG Secondary Antibody [HRP] |
| NB720-B | Rabbit anti-Mouse IgG (H+L) Secondary Antibody [Biotin] |
| NBP1-97005-0.5mg | Mouse IgG1 Isotype Control (MG1) |

Limitations

This product is for research use only and is not approved for use in humans or in clinical diagnosis. Primary Antibodies are guaranteed for 1 year from date of receipt.

For more information on our 100% guarantee, please visit www.novusbio.com/guarantee

Earn gift cards/discounts by submitting a review: www.novusbio.com/reviews/submit/NBP2-61083

Earn gift cards/discounts by submitting a publication using this product:
www.novusbio.com/publications

