

Product Datasheet

Creatine kinase MT 1A [p Tyr153] Antibody - Azide Free NBP2-60776

Unit Size: 100 ul

Store at -20C. Avoid freeze-thaw cycles.

www.novusbio.com



technical@novusbio.com

Protocols, Publications, Related Products, Reviews, Research Tools and Images at:
www.novusbio.com/NBP2-60776

Updated 9/9/2025 v.20.1

Earn rewards for product
reviews and publications.

Submit a publication at www.novusbio.com/publications

Submit a review at www.novusbio.com/reviews/destination/NBP2-60776



NBP2-60776

Creatine kinase MT 1A [p Tyr153] Antibody - Azide Free

Product Information

Unit Size	100 ul
Concentration	Please see the vial label for concentration. If unlisted please contact technical services.
Storage	Store at -20C. Avoid freeze-thaw cycles.
Clonality	Polyclonal
Preservative	No Preservative
Isotype	IgG
Purity	Antigen Affinity-purified
Buffer	10 mM HEPES (pH 7.5), 0.15 M NaCl, 0.1 mg/mL BSA, 50% Glycerol
Target Molecular Weight	46 kDa

Product Description

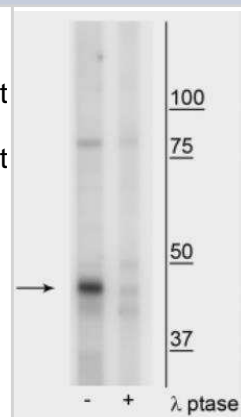
Description	Novus Biologicals Rabbit Creatine kinase MT 1A [p Tyr153] Antibody - Azide Free (NBP2-60776) is a polyclonal antibody validated for use in WB. All Novus Biologicals antibodies are covered by our 100% guarantee.
Host	Rabbit
Gene ID	548596
Gene Symbol	CKMT1A
Species	Human, Mouse
Reactivity Notes	This antibody detects both Isoform 1 and 2 of the protein.
Specificity/Sensitivity	Specific for endogenous levels of the ~46 kDa Creatine kinase MT 1A protein phosphorylated at Tyr153. Immunolabeling of Creatine kinase MT 1A is greatly decreased by lambda-phosphatase treatment.
Immunogen	Synthetic phospho-peptide corresponding to amino acid residues surrounding Tyr153 conjugated to KLH. Accession # P12532

Product Application Details

Applications	Western Blot
Recommended Dilutions	Western Blot 1:100-1:2000

Images

Western Blot: Creatine kinase MT 1A [p Tyr153] Antibody [NBP2-60776]
 - Western blot of mouse mitochondria from whole brain lysate showing specific immunolabeling of the ~46 kDa CK1Mt protein phosphorylated at Tyr153 in the first lane (-). Phosphospecificity is shown in the second lane (+) where the immunolabeling is greatly decreased by blot treatment with lambda phosphatase (Lambda-Ptase, 1200 units for 30 minutes).





Novus Biologicals USA

10730 E. Briarwood Avenue
Centennial, CO 80112
USA
Phone: 303.730.1950
Toll Free: 1.888.506.6887
Fax: 303.730.1966
nb-customerservice@bio-techne.com

Bio-Techne Canada

21 Canmotor Ave
Toronto, ON M8Z 4E6
Canada
Phone: 905.827.6400
Toll Free: 855.668.8722
Fax: 905.827.6402
canada.inquires@bio-techne.com

Bio-Techne Ltd

19 Barton Lane
Abingdon Science Park
Abingdon, OX14 3NB, United Kingdom
Phone: (44) (0) 1235 529449
Free Phone: 0800 37 34 15
Fax: (44) (0) 1235 533420
info.EMEA@bio-techne.com

General Contact Information

www.novusbio.com
Technical Support: nb-technical@bio-techne.com
Orders: nb-customerservice@bio-techne.com
General: novus@novusbio.com

Products Related to NBP2-60776

HAF008	Goat anti-Rabbit IgG Secondary Antibody [HRP]
NB7160	Goat anti-Rabbit IgG (H+L) Secondary Antibody [HRP]
NBP2-24891	Rabbit IgG Isotype Control
NBP2-13840PEP	Creatine kinase MT 1A Recombinant Protein Antigen

Limitations

This product is for research use only and is not approved for use in humans or in clinical diagnosis. Primary Antibodies are guaranteed for 1 year from date of receipt.

For more information on our 100% guarantee, please visit www.novusbio.com/guarantee

Earn gift cards/discounts by submitting a review: www.novusbio.com/reviews/submit/NBP2-60776

Earn gift cards/discounts by submitting a publication using this product:
www.novusbio.com/publications

