

# Product Datasheet

## Rabbit anti-Human IgG Fc Secondary Antibody NBP2-60675

Unit Size: 5 mg

Store at 4C short term. Aliquot and store at -20C long term. Avoid freeze-thaw cycles.

[www.novusbio.com](http://www.novusbio.com)



[technical@novusbio.com](mailto:technical@novusbio.com)

### Publications: 1

Protocols, Publications, Related Products, Reviews, Research Tools and Images at:  
[www.novusbio.com/NBP2-60675](http://www.novusbio.com/NBP2-60675)

Updated 10/23/2024 v.20.1

Earn rewards for product  
reviews and publications.

Submit a publication at [www.novusbio.com/publications](http://www.novusbio.com/publications)

Submit a review at [www.novusbio.com/reviews/destination/NBP2-60675](http://www.novusbio.com/reviews/destination/NBP2-60675)



**NBP2-60675****Rabbit anti-Human IgG Fc Secondary Antibody**

<b>Product Information</b>	
<b>Unit Size</b>	5 mg
<b>Concentration</b>	Please see the vial label for concentration. If unlisted please contact technical services.
<b>Storage</b>	Store at 4C short term. Aliquot and store at -20C long term. Avoid freeze-thaw cycles.
<b>Clonality</b>	Polyclonal
<b>Preservative</b>	0.01% Sodium Azide
<b>Isotype</b>	IgG
<b>Purity</b>	Multi-step
<b>Buffer</b>	0.02 M Potassium Phosphate, 0.15 M Sodium Chloride, pH 7.2

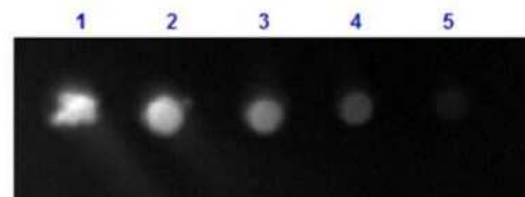
<b>Product Description</b>	
<b>Description</b>	<p>This product was prepared from monospecific antiserum by immunoaffinity chromatography using Human IgG coupled to agarose beads followed by solid phase adsorption(s) to remove any unwanted reactivities. Assay by immunoelectrophoresis resulted in a single precipitin arc against anti-Rabbit Serum, Human IgG, Human IgG F(c) and Human Serum</p> <p>Store vial at 4C prior to opening. This product is stable for several weeks at 4C as an undiluted liquid. Dilute only prior to immediate use. For extended storage aliquot contents and freeze at -20C or below. Avoid cycles of freezing and thawing.</p>
<b>Host</b>	Rabbit
<b>Species</b>	Human
<b>Specificity/Sensitivity</b>	No reaction was observed against Human IgG F(ab).
<b>Immunogen</b>	Rabbit anti-Human IgG Fc fragment Secondary Antibody was produced by repeated immunization with Human IgG F(c) fragment in rabbit.

<b>Product Application Details</b>	
<b>Applications</b>	Western Blot, Dot Blot, ELISA, Immunohistochemistry
<b>Recommended Dilutions</b>	Western Blot 1:3000-1:30000, ELISA 1:375000, Immunohistochemistry 1:1000-1:6000, Dot Blot
<b>Application Notes</b>	This product has been tested by western blot and is suitable for use in immunoelectrophoresis, western-blot, competitive western-blot, ELISA and competitive ELISA assays. Specific conditions for reactivity and signal detection should be optimized by the end user.



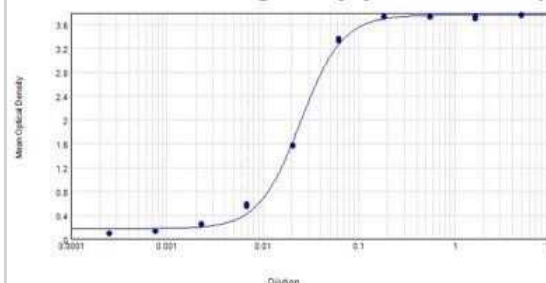
## Images

Dot Blot: Rabbit anti-Human IgG Fc Secondary Antibody [NBP2-60675] - Dot Blot results of [FITC]. Dots are Human IgG: (1) 100 ng, (2) 33.3 ng, (3) 11.1 ng, (4) 3.70 ng, (5) 1.23 ng. Blocked for 1hr at RT. Imaged with BioRad ChemiDoc, Fluorescein filter. Image from the FITC version of this antibody.

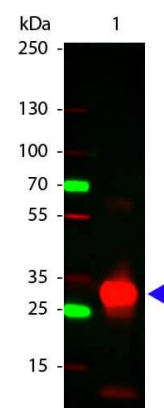


ELISA: Rabbit anti-Human IgG Fc Secondary Antibody [NBP2-60675] - ELISA results tested against purified Human IgG F(c). Each well was coated in duplicate with 1.0 ug of Human IgG F(c). The starting dilution of antibody was 5ug/ml and the X-axis represents the Log10 of a 3-fold dilution. This titration is a 4-parameter curve fit where the IC50 is defined as the titer of the antibody. Assay performed using 3 percent fish gelatin as blocking buffer and TMB substrate. Image using the HRP form of this antibody.

### Anti-Human IgG F(c) Sensitivity



Western Blot of Rabbit anti-Human Fc antibody. Lane 1: Human Fc



## Publications

Avanzato V, Matson M, Seifert S et al Case Study: Prolonged Infectious SARS-CoV-2 Shedding from an Asymptomatic Immunocompromised Individual with Cancer Cell 2020-11-29 [PMID: 33248470] (ELISA)

Details:

Citation using the HRP version of this antibody.



### **Novus Biologicals USA**

10730 E. Briarwood Avenue  
Centennial, CO 80112  
USA  
Phone: 303.730.1950  
Toll Free: 1.888.506.6887  
Fax: 303.730.1966  
nb-customerservice@bio-techne.com

### **Bio-Techne Canada**

21 Canmotor Ave  
Toronto, ON M8Z 4E6  
Canada  
Phone: 905.827.6400  
Toll Free: 855.668.8722  
Fax: 905.827.6402  
canada.inquires@bio-techne.com

### **Bio-Techne Ltd**

19 Barton Lane  
Abingdon Science Park  
Abingdon, OX14 3NB, United Kingdom  
Phone: (44) (0) 1235 529449  
Free Phone: 0800 37 34 15  
Fax: (44) (0) 1235 533420  
info.EMEA@bio-techne.com

### **General Contact Information**

www.novusbio.com  
Technical Support: nb-technical@bio-  
techne.com  
Orders: nb-customerservice@bio-techne.com  
General: novus@novusbio.com

### **Products Related to NBP2-60675**

---

NBP1-96784	Mouse IgG Fc Isotype Control
------------	------------------------------

---

### **Limitations**

This product is for research use only and is not approved for use in humans or in clinical diagnosis. Secondary Antibodies are guaranteed for 1 year from date of receipt.

For more information on our 100% guarantee, please visit [www.novusbio.com/guarantee](http://www.novusbio.com/guarantee)

Earn gift cards/discounts by submitting a review: [www.novusbio.com/reviews/submit/NBP2-60675](http://www.novusbio.com/reviews/submit/NBP2-60675)

Earn gift cards/discounts by submitting a publication using this product:  
[www.novusbio.com/publications](http://www.novusbio.com/publications)

