

Product Datasheet

Goat anti-Rat IgM Heavy Chain Secondary Antibody NBP2-60672

Unit Size: 1 mg

Store at 4C short term. Aliquot and store at -20C long term. Avoid freeze-thaw cycles.

www.novusbio.com



technical@novusbio.com

Publications: 1

Protocols, Publications, Related Products, Reviews, Research Tools and Images at:
www.novusbio.com/NBP2-60672

Updated 10/23/2024 v.20.1

Earn rewards for product
reviews and publications.

Submit a publication at www.novusbio.com/publications

Submit a review at www.novusbio.com/reviews/destination/NBP2-60672



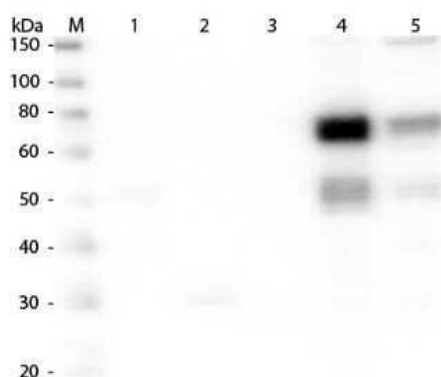
NBP2-60672**Goat anti-Rat IgM Heavy Chain Secondary Antibody**

Product Information	
Unit Size	1 mg
Concentration	Please see the vial label for concentration. If unlisted please contact technical services.
Storage	Store at 4C short term. Aliquot and store at -20C long term. Avoid freeze-thaw cycles.
Clonality	Polyclonal
Preservative	0.01% Sodium Azide
Isotype	IgG
Purity	Multi-step
Buffer	0.02 M Potassium Phosphate, 0.15 M Sodium Chloride, pH 7.2
Product Description	
Description	<p>This product was prepared from monospecific antiserum by immunoaffinity chromatography using Rat IgM coupled to agarose beads followed by solid phase adsorption(s) to remove any unwanted reactivities. Assay by immunoelectrophoresis resulted in a single precipitin arc against anti-Goat Serum, Rat IgM and Rat Serum</p> <p>Store vial at 4C prior to opening. This product is stable for several weeks at 4C as an undiluted liquid. Dilute only prior to immediate use. For extended storage aliquot contents and freeze at -20C or below. Avoid cycles of freezing and thawing.</p>
Host	Goat
Gene ID	3507
Gene Symbol	IGHM
Species	Rat
Specificity/Sensitivity	No reaction was observed against other rat heavy or light chain proteins.
Immunogen	Rat IgM whole molecule
Product Application Details	
Applications	Western Blot, ELISA, Fluorophore-linked immunosorbent assay, Immunocytochemistry/ Immunofluorescence, Immunohistochemistry, Immunohistochemistry-Paraffin
Recommended Dilutions	Western Blot 1:2000-1:10000, ELISA 1:80000, Immunohistochemistry 1:1000-1:5000, Immunocytochemistry/ Immunofluorescence, Immunohistochemistry-Paraffin 1:1000 - 1:5000, Fluorophore-linked immunosorbent assay
Application Notes	This product has been tested by ELISA and western blot and is assayed against Rat IgM in a standard capture ELISA using Peroxidase Conjugated Streptavidin. A working dilution of 1:15,000 to 1:70,000 of the concentration is suggested for this product. Rat IgM antibody is suitable for immunoassays including western blot and ELISA.

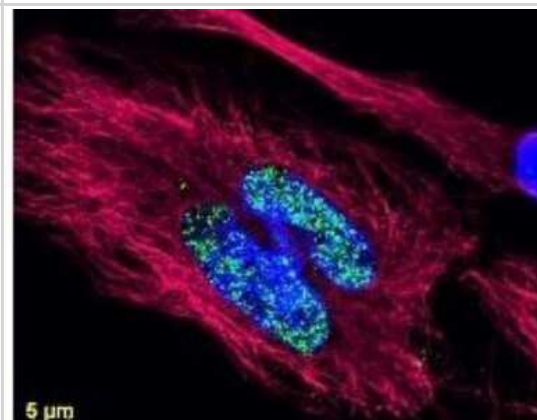


Images

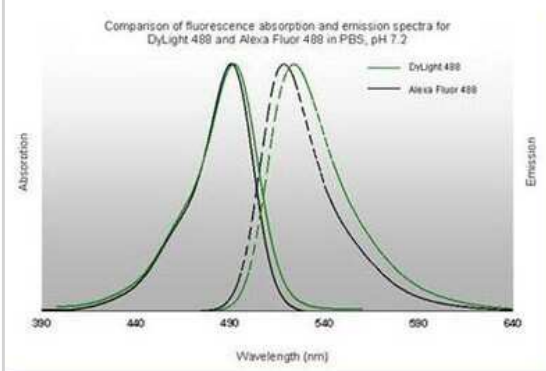
Western Blot: Goat anti-Rat IgM Heavy Chain Secondary Antibody [NBP2-60672] - Lane 1: Rat IgG whole molecule. Lane 2: Rat IgG F(c) Fragment. Lane 3: Rat IgG Fab Fragment. Lane 4: Rat IgM Whole Molecule. Lane 5: Rat Serum. All samples were reduced. Load: 50 ng per lane. Block: incubated with blocking buffer for 30 min at RT. Primary Antibody: Anti-Rat IgM (mu chain) (GOAT) Antibody 1:1,000 for 60 min at RT. Secondary Antibody: Anti-Goat IgG (DONKEY) Peroxidase Conjugated Antibody 1:40,000 in incubated with blocking buffer for 30 min at RT. Predicted/Observed Size: 25 and 55 kDa for Rat IgG and Serum, 25 kDa for F(c) and Fab, 78 and 25 kDa for IgM. Rat F(c) migrates slightly higher. Image using the Biotin form of this antibody.



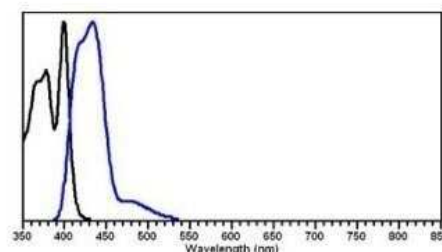
Immunocytochemistry/Immunofluorescence: Goat anti-Rat IgM Heavy Chain Secondary Antibody [NBP2-60672] - Anti-histone detection using a DyLight 488 conjugate (green). Anti-Tubulin was detected using a DyLight 549 conjugate (red). Nuclei were counter-stained using DAPI (blue). The image was captured using an Axio Imager.Z1 (Zeiss Micro Imaging Inc). Image using the DyLight 488 format of this antibody.



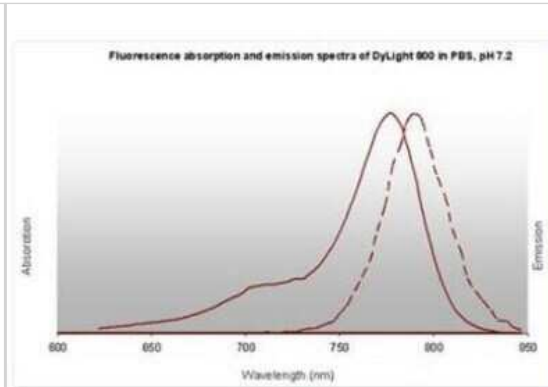
Fluorophore-linked immunosorbent assay: Goat anti-Rat IgM Heavy Chain Secondary Antibody [NBP2-60672] - Image using the DyLight 488 format of this antibody.



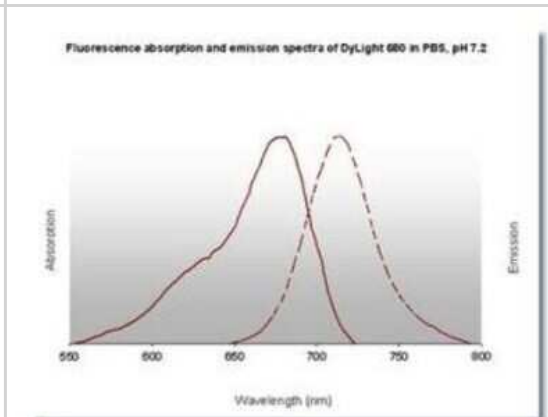
Fluorophore-linked immunosorbent assay: Goat anti-Rat IgM Heavy Chain Secondary Antibody [NBP2-60672] - Image using the DyLight 405 format of this antibody.



Fluorophore-linked immunosorbent assay: Goat anti-Rat IgM Heavy Chain Secondary Antibody [NBP2-60672] - Image using the DyLight 800 format of this antibody.



Fluorophore-linked immunosorbent assay: Goat anti-Rat IgM Heavy Chain Secondary Antibody [NBP2-60672] - Image using the DyLight 680 format of this antibody.



Publications

Adzemovic MZ, Zeitelhofer M, Hochmeister S et al. Efficacy of vitamin D in treating multiple sclerosis-like neuroinflammation depends on developmental stage Exp Neurol 2013-08-20 [PMID: 23954214] (IHC-P)



Novus Biologicals USA

10730 E. Briarwood Avenue
Centennial, CO 80112
USA
Phone: 303.730.1950
Toll Free: 1.888.506.6887
Fax: 303.730.1966
nb-customerservice@bio-techne.com

Bio-Techne Canada

21 Canmotor Ave
Toronto, ON M8Z 4E6
Canada
Phone: 905.827.6400
Toll Free: 855.668.8722
Fax: 905.827.6402
canada.inquires@bio-techne.com

Bio-Techne Ltd

19 Barton Lane
Abingdon Science Park
Abingdon, OX14 3NB, United Kingdom
Phone: (44) (0) 1235 529449
Free Phone: 0800 37 34 15
Fax: (44) (0) 1235 533420
info.EMEA@bio-techne.com

General Contact Information

www.novusbio.com
Technical Support: nb-technical@bio-techne.com
Orders: nb-customerservice@bio-techne.com
General: novus@novusbio.com

Products Related to NBP2-60672

NB100-524	NOD2 Antibody (2D9) - BSA Free
NBP1-96772	Human IgM Heavy Chain Isotype Control
7268-CT-100	CTLA-4 [Unconjugated]
NB200-541	Complement C4b/d Antibody (16D2)

Limitations

This product is for research use only and is not approved for use in humans or in clinical diagnosis. Secondary Antibodies are guaranteed for 1 year from date of receipt.

For more information on our 100% guarantee, please visit www.novusbio.com/guarantee

Earn gift cards/discounts by submitting a review: www.novusbio.com/reviews/submit/NBP2-60672

Earn gift cards/discounts by submitting a publication using this product:
www.novusbio.com/publications

