

# Product Datasheet

## Goat anti-Canine IgG (H+L) Secondary Antibody NBP2-60652

Unit Size: 1 mg

Store at 4C. Do not freeze.

[www.novusbio.com](http://www.novusbio.com)



[technical@novusbio.com](mailto:technical@novusbio.com)

Protocols, Publications, Related Products, Reviews, Research Tools and Images at:  
[www.novusbio.com/NBP2-60652](http://www.novusbio.com/NBP2-60652)

Updated 10/23/2024 v.20.1

Earn rewards for product  
reviews and publications.

Submit a publication at [www.novusbio.com/publications](http://www.novusbio.com/publications)

Submit a review at [www.novusbio.com/reviews/destination/NBP2-60652](http://www.novusbio.com/reviews/destination/NBP2-60652)



**NBP2-60652**

## Goat anti-Canine IgG (H+L) Secondary Antibody

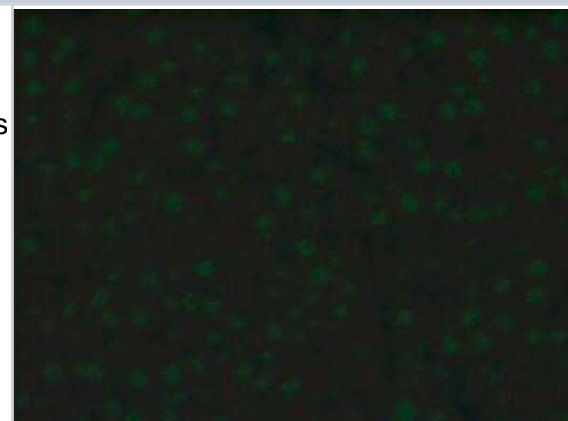
Product Information	
Unit Size	1 mg
Concentration	Please see the vial label for concentration. If unlisted please contact technical services.
Storage	Store at 4C. Do not freeze.
Clonality	Polyclonal
Preservative	0.05% Sodium Azide
Isotype	IgG
Purity	Affinity purified
Buffer	10 mM Sodium Phosphate, 0.15 M Sodium Chloride, pH 7.2

Product Description	
Host	Goat
Species	Canine
Reactivity Notes	Based on IEP, no reactivity is observed to non-immunoglobulin canine serum immunoglobulins
Specificity/Sensitivity	Based on IEP, this Goat anti-Canine IgG (H+L) Secondary Antibody reacts with heavy gamma chains on dog IgG and light chains on all dog immunoglobulins.
Immunogen	This Goat anti-Canine IgG (H+L) Secondary Antibody was developed against purified canine IgG (H&L).

Product Application Details	
Applications	Flow Cytometry, Immunocytochemistry/ Immunofluorescence, Immunomicroscopy
Recommended Dilutions	Flow Cytometry 1:20-1:2000, Immunocytochemistry/ Immunofluorescence, Immunomicroscopy 1:20-1:2000
Application Notes	This conjugate is suitable for immunomicroscopy and flow cytometry.

**Images**

Immunocytochemistry/Immunofluorescence: Goat anti-Canine IgG (H+L) Secondary Antibody [NBP2-60652] - Rat liver stained with anti-nuclear antibody followed by Goat anti-Canine IgG (H+L) Secondary Antibody. Image from verified customer review. Image using the FITC format of this antibody.





### **Novus Biologicals USA**

10730 E. Briarwood Avenue  
Centennial, CO 80112  
USA  
Phone: 303.730.1950  
Toll Free: 1.888.506.6887  
Fax: 303.730.1966  
nb-customerservice@bio-techne.com

### **Bio-Techne Canada**

21 Canmotor Ave  
Toronto, ON M8Z 4E6  
Canada  
Phone: 905.827.6400  
Toll Free: 855.668.8722  
Fax: 905.827.6402  
canada.inquires@bio-techne.com

### **Bio-Techne Ltd**

19 Barton Lane  
Abingdon Science Park  
Abingdon, OX14 3NB, United Kingdom  
Phone: (44) (0) 1235 529449  
Free Phone: 0800 37 34 15  
Fax: (44) (0) 1235 533420  
info.EMEA@bio-techne.com

### **General Contact Information**

www.novusbio.com  
Technical Support: nb-technical@bio-  
techne.com  
Orders: nb-customerservice@bio-techne.com  
General: novus@novusbio.com

### **Limitations**

This product is for research use only and is not approved for use in humans or in clinical diagnosis. Secondary Antibodies are guaranteed for 1 year from date of receipt.

For more information on our 100% guarantee, please visit [www.novusbio.com/guarantee](http://www.novusbio.com/guarantee)

Earn gift cards/discounts by submitting a review: [www.novusbio.com/reviews/submit/NBP2-60652](http://www.novusbio.com/reviews/submit/NBP2-60652)

Earn gift cards/discounts by submitting a publication using this product:  
[www.novusbio.com/publications](http://www.novusbio.com/publications)

