

# Product Datasheet

## Mouse Albumin ELISA Kit (Colorimetric) NBP2-60484

Unit Size: 1 Kit

Storage is content dependent.

[www.novusbio.com](http://www.novusbio.com)



[technical@novusbio.com](mailto:technical@novusbio.com)

Protocols, Publications, Related Products, Reviews, Research Tools and Images at:  
[www.novusbio.com/NBP2-60484](http://www.novusbio.com/NBP2-60484)

Updated 10/23/2024 v.20.1

Earn rewards for product  
reviews and publications.

Submit a publication at [www.novusbio.com/publications](http://www.novusbio.com/publications)

Submit a review at [www.novusbio.com/reviews/destination/NBP2-60484](http://www.novusbio.com/reviews/destination/NBP2-60484)



**NBP2-60484****Mouse Albumin ELISA Kit (Colorimetric)**

Product Information	
Unit Size	1 Kit
Concentration	Concentration is not relevant for this product. Please see the protocols for proper use of this product.
Storage	Storage is content dependent.

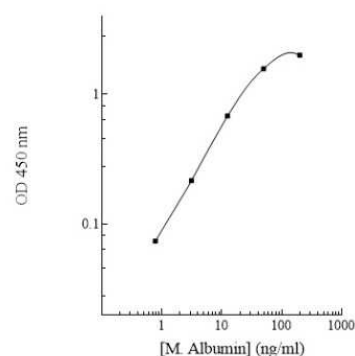
Product Description	
Description	This assay employs a quantitative enzyme immunoassay technique that measures the specified antigen in samples.
Gene ID	213
Gene Symbol	ALB
Species	Mouse
Standard Curve Range	0.781 - 200 ng/mL (example only; lot dependent)
Sensitivity	0.72 ng/ml (example only; lot dependent)
Inter Assay	CV% < 9.80% (example only; lot dependent)
Intra Assay	CV% < 3.90% (example only; lot dependent)
Assay Type	Sandwich ELISA
Spiking Recovery	97.00% (example only; lot dependent)
Suitable Sample Type	Cell Culture, Urine

Product Application Details	
Applications	ELISA, Sandwich ELISA
Recommended Dilutions	ELISA, Sandwich ELISA

**Images**

ELISA: Mouse Albumin ELISA Kit (Colorimetric) [NBP2-60484]

Mouse Albumin Standard Curve





### **Novus Biologicals USA**

10730 E. Briarwood Avenue  
Centennial, CO 80112  
USA  
Phone: 303.730.1950  
Toll Free: 1.888.506.6887  
Fax: 303.730.1966  
nb-customerservice@bio-techne.com

### **Bio-Techne Canada**

21 Canmotor Ave  
Toronto, ON M8Z 4E6  
Canada  
Phone: 905.827.6400  
Toll Free: 855.668.8722  
Fax: 905.827.6402  
canada.inquires@bio-techne.com

### **Bio-Techne Ltd**

19 Barton Lane  
Abingdon Science Park  
Abingdon, OX14 3NB, United Kingdom  
Phone: (44) (0) 1235 529449  
Free Phone: 0800 37 34 15  
Fax: (44) (0) 1235 533420  
info.EMEA@bio-techne.com

### **General Contact Information**

www.novusbio.com  
Technical Support: nb-technical@bio-techne.com  
Orders: nb-customerservice@bio-techne.com  
General: novus@novusbio.com

### **Products Related to NBP2-60484**

---

NBP1-96881	Albumin Native Protein
210-TA-005	TNF-alpha [Unconjugated]
MAB1455	Albumin Antibody (188835) [Unconjugated] - Serum
M6000B-1	IL-6 [HRP]

---

### **Limitations**

This product is for research use only and is not approved for use in humans or in clinical diagnosis. ELISA Kits are guaranteed for 6 months from date of receipt.

For more information on our 100% guarantee, please visit [www.novusbio.com/guarantee](http://www.novusbio.com/guarantee)

Earn gift cards/discounts by submitting a review: [www.novusbio.com/reviews/submit/NBP2-60484](http://www.novusbio.com/reviews/submit/NBP2-60484)

Earn gift cards/discounts by submitting a publication using this product:  
[www.novusbio.com/publications](http://www.novusbio.com/publications)

