

Product Datasheet

TOMM20 Antibody (1B2) - BSA Free **NBP2-60248-100ul**

Unit Size: 100 ul

Store at 4C short term. Aliquot and store at -20C long term. Avoid freeze-thaw cycles.

www.novusbio.com



technical@novusbio.com

Protocols, Publications, Related Products, Reviews, Research Tools and Images at:
www.novusbio.com/NBP2-60248

Updated 10/23/2024 v.20.1

Earn rewards for product
reviews and publications.

Submit a publication at www.novusbio.com/publications

Submit a review at www.novusbio.com/reviews/destination/NBP2-60248



NBP2-60248-100ul

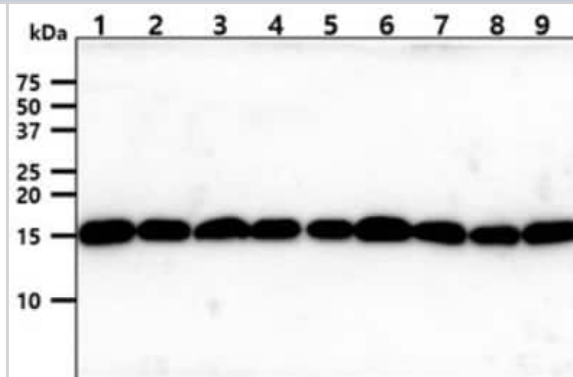
TOMM20 Antibody (1B2) - BSA Free

Product Information	
Unit Size	100 ul
Concentration	1 mg/ml
Storage	Store at 4C short term. Aliquot and store at -20C long term. Avoid freeze-thaw cycles.
Clonality	Monoclonal
Clone	1B2
Preservative	0.02% Sodium Azide
Isotype	IgG1 Kappa
Purity	Protein A purified
Buffer	PBS (pH 7.4), 10% Glycerol
Product Description	
Host	Mouse
Gene ID	9804
Gene Symbol	TOMM20
Species	Human, Mouse
Reactivity Notes	Mouse reactivity reported from a verified customer review.
Immunogen	Recombinant human Tomm20 (25-145aa) purified from E. coli
Product Application Details	
Applications	Western Blot, ELISA, Flow Cytometry, Immunocytochemistry/ Immunofluorescence
Recommended Dilutions	Western Blot 1:1000, Flow Cytometry 2-5 ug, ELISA 1:100 - 1:2000, Immunocytochemistry/ Immunofluorescence 1:100

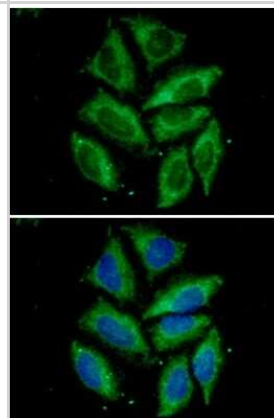


Images

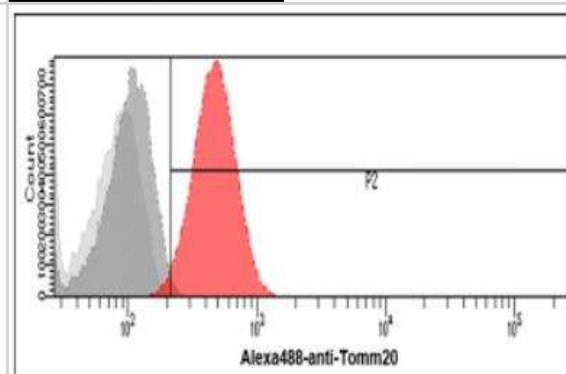
Western Blot: TOMM20 Antibody (1B2) [NBP2-60248] - The cell lysates (40ug) were resolved by SDS-PAGE, transferred to PVDF membrane and probed with anti-human Tomm20 antibody (1:1000). Proteins were visualized using a goat anti-mouse secondary antibody conjugated to HRP and an ECL detection system. Lane 1.: HeLa cell lysate Lane 2.: HepG2 cell lysate Lane 3.: A431 cell lysate Lane 4.: K562 cell lysate Lane 5.: A549 cell lysate Lane 6.: 293T cell lysate Lane 7.: MCF7 cell lysate Lane 8.: SK-OV-3 cell lysate Lane 9.: PC3 cell lysate



Immunocytochemistry/Immunofluorescence: TOMM20 Antibody (1B2) [NBP2-60248] - Staining in HeLa cells. The secondary antibody (green) was Alexa Fluor 488. DAPI was stained the cell nucleus (blue).



Flow Cytometry: TOMM20 Antibody (1B2) [NBP2-60248] - Analysis of Tomm20 in HeLa cells. The cell was stained, at 2-5ug for 1x10⁶ cells (red). A Goat anti mouse IgG (Alexa fluor 488) was used as the secondary antibody. Mouse monoclonal IgG was used as the isotype control (dark gray), cells without incubation with primary and secondary antibody was used as the negative control (light gray)



Western Blot: TOMM20 Antibody (1B2) [NBP2-60248] - Analysis of mouse bone marrow derived macrophages using TOMM20 at 1:1000 dilution. A single band observed around the 15kDa ladder. The image is captured using chemiluminescence imaging system. Image from verified customer review.





Novus Biologicals USA

10730 E. Briarwood Avenue
Centennial, CO 80112
USA
Phone: 303.730.1950
Toll Free: 1.888.506.6887
Fax: 303.730.1966
nb-customerservice@bio-techne.com

Bio-Techne Canada

21 Canmotor Ave
Toronto, ON M8Z 4E6
Canada
Phone: 905.827.6400
Toll Free: 855.668.8722
Fax: 905.827.6402
canada.inquires@bio-techne.com

Bio-Techne Ltd

19 Barton Lane
Abingdon Science Park
Abingdon, OX14 3NB, United Kingdom
Phone: (44) (0) 1235 529449
Free Phone: 0800 37 34 15
Fax: (44) (0) 1235 533420
info.EMEA@bio-techne.com

General Contact Information

www.novusbio.com
Technical Support: nb-technical@bio-techne.com
Orders: nb-customerservice@bio-techne.com
General: novus@novusbio.com

Products Related to NBP2-60248-100ul

HAF007	Goat anti-Mouse IgG Secondary Antibody [HRP]
NB720-B	Rabbit anti-Mouse IgG (H+L) Secondary Antibody [Biotin]
NBP1-43319-0.5mg	Mouse IgG1 Kappa Isotype Control (P3.6.2.8.1)
NBP2-22883	Recombinant Human TOMM20 His Protein

Limitations

This product is for research use only and is not approved for use in humans or in clinical diagnosis. Primary Antibodies are guaranteed for 1 year from date of receipt.

For more information on our 100% guarantee, please visit www.novusbio.com/guarantee

Earn gift cards/discounts by submitting a review: www.novusbio.com/reviews/submit/NBP2-60248

Earn gift cards/discounts by submitting a publication using this product:
www.novusbio.com/publications

