

Product Datasheet

Lamin B Receptor Antibody (BB2SS3F3) - BSA Free NBP2-59947

Unit Size: 0.1 mg

Store at 4C short term. Aliquot and store at -20C long term. Avoid freeze-thaw cycles.

www.novusbio.com



technical@novusbio.com

Publications: 1

Protocols, Publications, Related Products, Reviews, Research Tools and Images at:
www.novusbio.com/NBP2-59947

Updated 2/23/2025 v.20.1

Earn rewards for product
reviews and publications.

Submit a publication at www.novusbio.com/publications

Submit a review at www.novusbio.com/reviews/destination/NBP2-59947



NBP2-59947

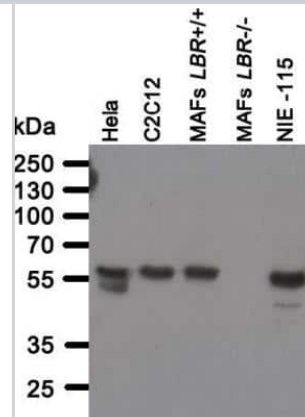
Lamin B Receptor Antibody (BB2SS3F3) - BSA Free

Product Information	
Unit Size	0.1 mg
Concentration	1 mg/ml
Storage	Store at 4C short term. Aliquot and store at -20C long term. Avoid freeze-thaw cycles.
Clonality	Monoclonal
Clone	BB2SS3F3
Preservative	0.02% Sodium Azide
Isotype	IgG1 Kappa
Purity	Protein A purified
Buffer	PBS
Product Description	
Host	Mouse
Gene ID	3930
Gene Symbol	LBR
Species	Human, Mouse
Specificity/Sensitivity	Specificity of human, mouse Lamin B Receptor antibody verified on a Protein Array containing target protein plus 383 other non-specific proteins.
Immunogen	GST fused to N-terminal fragment of human Lamin B Receptor (amino acids residues 1-211)
Product Application Details	
Applications	Western Blot, Immunocytochemistry/ Immunofluorescence, Immunohistochemistry, Immunohistochemistry-Frozen, Immunohistochemistry-Paraffin
Recommended Dilutions	Western Blot 1:100 - 1:2000, Immunohistochemistry, Immunocytochemistry/ Immunofluorescence 1:10 - 1:500, Immunohistochemistry-Paraffin 1:10 - 1:500, Immunohistochemistry-Frozen
Application Notes	ICC/IF: fixation with methanol fixation resulting in a brighter signal. Positive Control: C2C12, mouse fibroblast

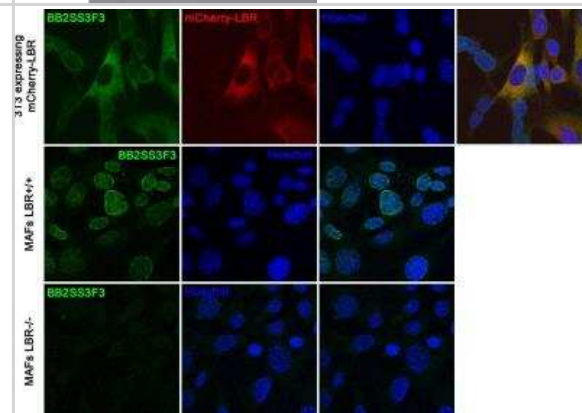


Images

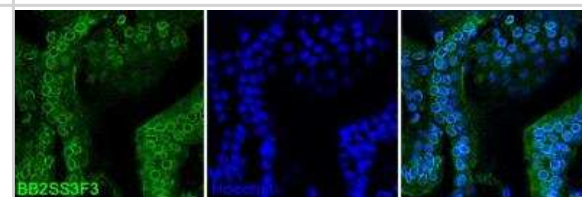
Western Blot: Lamin B Receptor Antibody (BB2SS3F3) [NBP2-59947] - Analysis of whole cell lysate from human (Hela) and mouse (C2C12, immortalized mouse adult fibroblasts (MAFs), NIE-115) cell lines were separated on SDS-PAGE gel, transferred to nitrocellulose membrane and blotted with BB2SS3F3 antibody. Both primary and secondary antibodies were diluted in blocking buffer (5% nonfat dry milk resuspended in 0.1% Tween and 1X PBS). The predicted molecular weight is 70.7kDa and 71.4kDa for human and mouse LBR respectively. The absence of a band in LBR null MAFs indicated that the antibody specifically recognizes LBR.



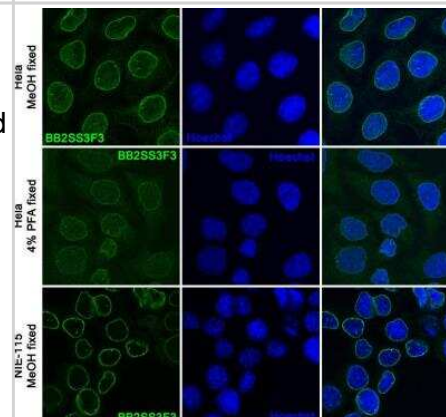
Immunocytochemistry/Immunofluorescence: Lamin B Receptor Antibody (BB2SS3F3) [NBP2-59947] - The antibody specifically detects LBR. Wild-type immortalized mouse adult fibroblast (MAFs LBR+/+) (upper panel) and LBR-null MEFs (MAFs LBR-/-) (lower panel) were methanol fixed and immunofluorescently stained with BB2SS3F3 mouse monoclonal antibody. In LBR-null MEFs there is a loss of BB2SS3F3 antibody staining signal indicating the LBR specific signal of the BB2SS3F3 antibody.



Immunohistochemistry-Frozen: Lamin B Receptor Antibody (BB2SS3F3) [NBP2-59947] - Staining of mouse small intestine. Small intestine from adult C57BL/6 mice was transferred to OCT compound and frozen in liquid nitrogen. Tissue cryosections were fixed in 10% neutral buffered formalin, permeabilized and stained with anti-LBR BB2SS3F3 antibody.



Immunocytochemistry/Immunofluorescence: Lamin B Receptor Antibody (BB2SS3F3) [NBP2-59947] - Confocal images of human (Hela) and mouse (NIE-115) cell lines immunofluorescently stained with BB2SS3F3 antibody. The BB2SS3F3 antibody works on cells fixed with 4% PFA and cold methanol with methanol fixation resulting in brighter signal of the antibody.



Publications

Stixova L, Komurkova D, Svobodova Kovarikova A Et Al. Localization of METTL16 at the Nuclear Periphery and the Nucleolus Is Cell Cycle-Specific and METTL16 Interacts with Several Nucleolar Proteins Life 2021-07-08 [PMID: 34357041] (ICC/IF)



Novus Biologicals USA

10730 E. Briarwood Avenue
Centennial, CO 80112
USA
Phone: 303.730.1950
Toll Free: 1.888.506.6887
Fax: 303.730.1966
nb-customerservice@bio-techne.com

Bio-Techne Canada

21 Canmotor Ave
Toronto, ON M8Z 4E6
Canada
Phone: 905.827.6400
Toll Free: 855.668.8722
Fax: 905.827.6402
canada.inquires@bio-techne.com

Bio-Techne Ltd

19 Barton Lane
Abingdon Science Park
Abingdon, OX14 3NB, United Kingdom
Phone: (44) (0) 1235 529449
Free Phone: 0800 37 34 15
Fax: (44) (0) 1235 533420
info.EMEA@bio-techne.com

General Contact Information

www.novusbio.com
Technical Support: nb-technical@bio-techne.com
Orders: nb-customerservice@bio-techne.com
General: novus@novusbio.com

Products Related to NBP2-59947

HAF007	Goat anti-Mouse IgG Secondary Antibody [HRP]
NB720-B	Rabbit anti-Mouse IgG (H+L) Secondary Antibody [Biotin]
NBP1-43319-0.5mg	Mouse IgG1 Kappa Isotype Control (P3.6.2.8.1)
NBP2-14185PEP	Lamin B Receptor Recombinant Protein Antigen

Limitations

This product is for research use only and is not approved for use in humans or in clinical diagnosis. Primary Antibodies are guaranteed for 1 year from date of receipt.

For more information on our 100% guarantee, please visit www.novusbio.com/guarantee

Earn gift cards/discounts by submitting a review: www.novusbio.com/reviews/submit/NBP2-59947

Earn gift cards/discounts by submitting a publication using this product:
www.novusbio.com/publications

