

Product Datasheet

Lamin B1 Antibody (CL3929) - BSA Free NBP2-59783

Unit Size: 100 ul

Store at 4C short term. Aliquot and store at -20C long term. Avoid freeze-thaw cycles.

www.novusbio.com



technical@novusbio.com

Reviews: 1 Publications: 7

Protocols, Publications, Related Products, Reviews, Research Tools and Images at:
www.novusbio.com/NBP2-59783

Updated 2/27/2025 v.20.1

Earn rewards for product
reviews and publications.

Submit a publication at www.novusbio.com/publications

Submit a review at www.novusbio.com/reviews/destination/NBP2-59783



NBP2-59783

Lamin B1 Antibody (CL3929) - BSA Free

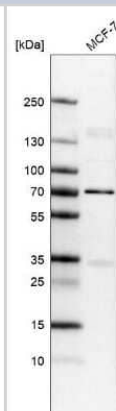
Product Information	
Unit Size	100 ul
Concentration	Concentrations vary lot to lot. See vial label for concentration. If unlisted please contact technical services.
Storage	Store at 4C short term. Aliquot and store at -20C long term. Avoid freeze-thaw cycles.
Clonality	Monoclonal
Clone	CL3929
Preservative	0.02% Sodium Azide
Isotype	IgG1
Purity	Protein A purified
Buffer	PBS (pH 7.2) and 40% Glycerol

Product Description	
Host	Mouse
Gene ID	4001
Gene Symbol	LMNB1
Species	Human
Immunogen	This antibody was developed using a synthetic peptide derived from P20700, with the exact immunogen sequence remaining proprietary.

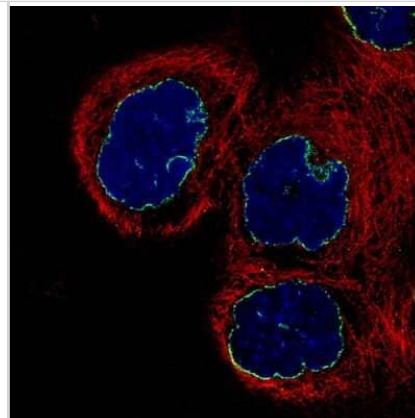
Product Application Details	
Applications	Western Blot, Immunocytochemistry/ Immunofluorescence, Immunohistochemistry, Immunohistochemistry-Paraffin
Recommended Dilutions	Western Blot 1 ug/ml, Immunohistochemistry 1:500 - 1:1000, Immunocytochemistry/ Immunofluorescence 2-10 ug/ml, Immunohistochemistry-Paraffin 1:500 - 1:1000
Application Notes	For IHC-Paraffin, HIER pH 6 retrieval is recommended. ICC/IF Fixation Permeabilization: Use PFA/Triton X-100.

Images

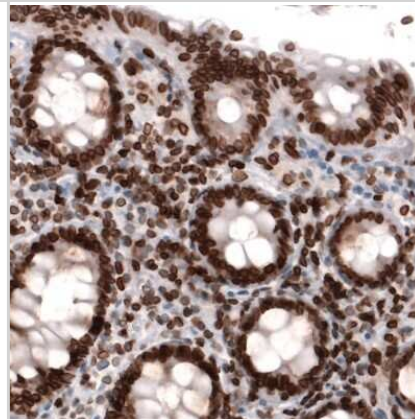
Western Blot: Lamin B1 Antibody (CL3929) [NBP2-59783] - Analysis in human cell line MCF-7.



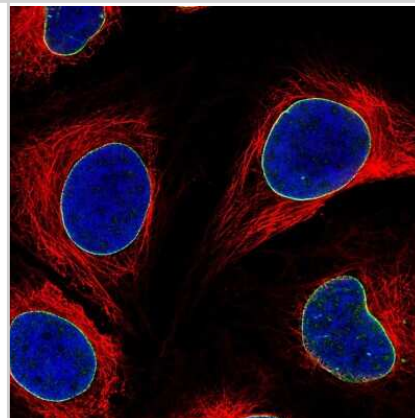
Immunocytochemistry/Immunofluorescence: Lamin B1 Antibody (CL3929) [NBP2-59783] - Staining of A-431 cells showing specific staining of nuclear membrane in green. Microtubule and nuclear probes are visualized in red and blue, respectively (where available). Antibody staining is shown in green.



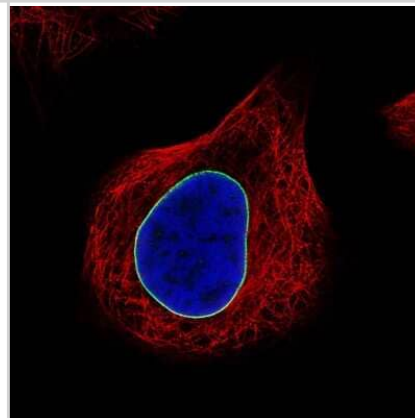
Immunohistochemistry-Paraffin: Lamin B1 Antibody (CL3929) [NBP2-59783] - Staining of human colon shows nuclear membrane positivity in glandular and connective tissue cells.



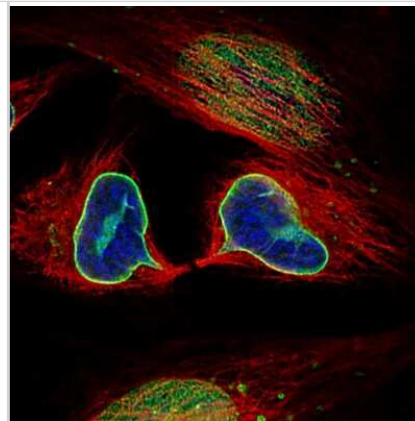
Immunocytochemistry/Immunofluorescence: Lamin B1 Antibody (CL3929) [NBP2-59783] - Staining of MCF7 cells showing specific staining of nuclear membrane in green. Microtubule and nuclear probes are visualized in red and blue, respectively (where available). Antibody staining is shown in green.



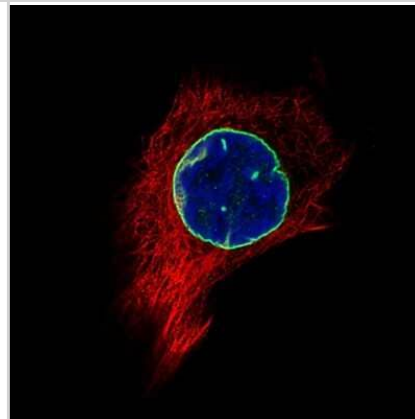
Immunocytochemistry/Immunofluorescence: Lamin B1 Antibody (CL3929) [NBP2-59783] - Staining of U-251 cells showing specific staining of nuclear membrane in green. Microtubule and nuclear probes are visualized in red and blue, respectively (where available). Antibody staining is shown in green.



Immunocytochemistry/Immunofluorescence: Lamin B1 Antibody (CL3929) [NBP2-59783] - Staining of HeLa cells showing specific staining of nuclear membrane in green. Microtubule and nuclear probes are visualized in red and blue, respectively (where available). Antibody staining is shown in green.



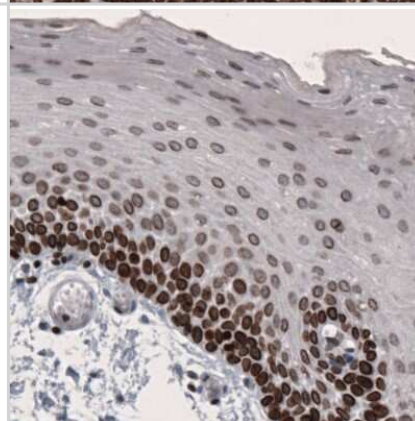
Immunocytochemistry/Immunofluorescence: Lamin B1 Antibody (CL3929) [NBP2-59783] - Staining of U-2 OS cells showing specific staining of nuclear membrane in green. Microtubule and nuclear probes are visualized in red and blue, respectively (where available). Antibody staining is shown in green.



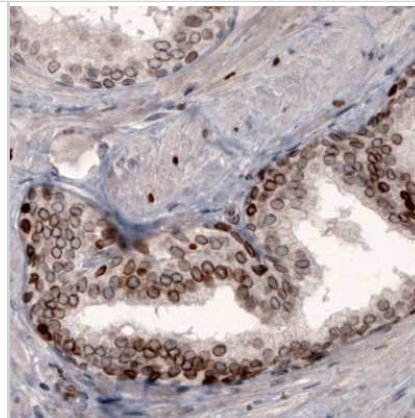
Immunohistochemistry-Paraffin: Lamin B1 Antibody (CL3929) [NBP2-59783] - Staining of human tonsil shows strong nuclear membrane immunoreactivity in lymphoid cells.



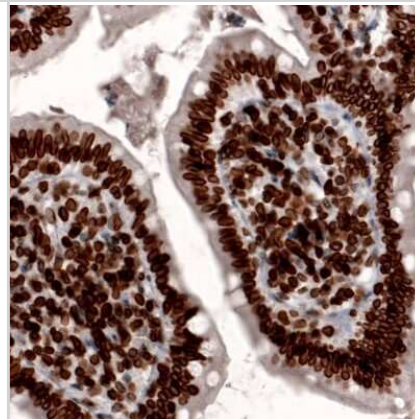
Immunohistochemistry-Paraffin: Lamin B1 Antibody (CL3929) [NBP2-59783] - Staining of human oral mucosa shows nuclear membrane positivity in the epithelial cells.



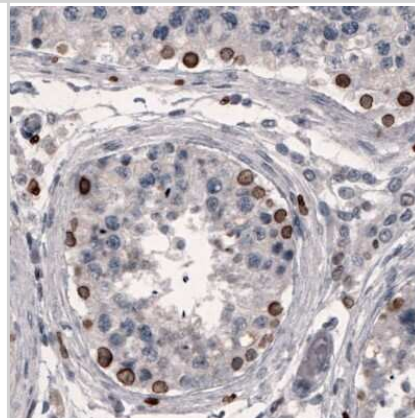
Immunohistochemistry-Paraffin: Lamin B1 Antibody (CL3929) [NBP2-59783] - Staining of human prostate shows nuclear membrane immunoreactivity in glandular epithelium cells.



Immunohistochemistry-Paraffin: Lamin B1 Antibody (CL3929) [NBP2-59783] - Staining of human small intestine shows nuclear membrane immunoreactivity in glandular and connective tissue cells.



Immunohistochemistry-Paraffin: Lamin B1 Antibody (CL3929) [NBP2-59783] - Staining of human testis shows strong nuclear membrane positivity in a subset of cells in the seminiferous tubules.



Publications

Saleh, T;Alhesa, A;El-Sadoni, M;Abu Shahin, N;Alsharaiah, E;Al Shboul, S;Awad, H;Bloukh, S;Al-Balas, M;Alsalem, M;Azab, B;Aladily, TN; The Expression of the Senescence-Associated Biomarker Lamin B1 in Human Breast Cancer Diagnostics (Basel, Switzerland) [PMID: 35328162]

Saleh T, El-Sadoni M, Alhesa A Et al. Expression of Senescence and Apoptosis Biomarkers in Synchronous Bilateral Breast Cancer: A Case Report Current oncology (Toronto, Ont.) 2021-09-30 [PMID: 34677245] (IF/IHC, Human)

Molla S, Chatterjee S, Sethy C et al. Olaparib enhances curcumin-mediated apoptosis in oral cancer cells by inducing PARP trapping through modulation of BER and chromatin assembly DNA repair 2021-06-10 [PMID: 34144488]

Saleh T, Alhesa A, Al-Balas M et al. Expression of therapy-induced senescence markers in breast cancer samples upon incomplete response to neoadjuvant chemotherapy Bioscience reports 2021-05-28 [PMID: 33948615] (IF/IHC, Human)

Fang X, Dai E, Bai L et al. The HMGB1-AGER-STING1 pathway mediates the sterile inflammatory response to alkaloptosis Biochemical and biophysical research communications 2021-06-30 [PMID: 33992959]

Molla S, Hembram KC, Chatterjee S et al. PARP inhibitor Olaparib Enhances the Apoptotic Potentiality of Curcumin by Increasing the DNA Damage in Oral Cancer Cells through Inhibition of BER Cascade Pathol. Oncol. Res. 2019-11-25 [PMID: 31768967] (Human)

Hembram KC, Chatterjee S, Sethy C et al. Comparative and Mechanistic Study on the Anticancer Activity of Quinacrine-Based Silver and Gold Hybrid Nanoparticles in Head and Neck Cancer Mol. Pharm. 2019-07-01 [PMID: 31145852]





Novus Biologicals USA

10730 E. Briarwood Avenue
Centennial, CO 80112
USA
Phone: 303.730.1950
Toll Free: 1.888.506.6887
Fax: 303.730.1966
nb-customerservice@bio-techne.com

Bio-Techne Canada

21 Canmotor Ave
Toronto, ON M8Z 4E6
Canada
Phone: 905.827.6400
Toll Free: 855.668.8722
Fax: 905.827.6402
canada.inquires@bio-techne.com

Bio-Techne Ltd

19 Barton Lane
Abingdon Science Park
Abingdon, OX14 3NB, United Kingdom
Phone: (44) (0) 1235 529449
Free Phone: 0800 37 34 15
Fax: (44) (0) 1235 533420
info.EMEA@bio-techne.com

General Contact Information

www.novusbio.com
Technical Support: nb-technical@bio-techne.com
Orders: nb-customerservice@bio-techne.com
General: novus@novusbio.com

Products Related to NBP2-59783

HAF007	Goat anti-Mouse IgG Secondary Antibody [HRP]
NB720-B	Rabbit anti-Mouse IgG (H+L) Secondary Antibody [Biotin]
NBP1-97005-0.5mg	Mouse IgG1 Isotype Control (MG1)
H00004001-P01-10ug	Recombinant Human Lamin B1 GST (N-Term) Protein

Limitations

This product is for research use only and is not approved for use in humans or in clinical diagnosis. Primary Antibodies are guaranteed for 1 year from date of receipt.

For more information on our 100% guarantee, please visit www.novusbio.com/guarantee

Earn gift cards/discounts by submitting a review: www.novusbio.com/reviews/submit/NBP2-59783

Earn gift cards/discounts by submitting a publication using this product:
www.novusbio.com/publications

