

# Product Datasheet

## Creatine Kinase BB Antibody (2ba6) NBP2-59600-100ug

Unit Size: 100 ug

Store at 4C.

[www.novusbio.com](http://www.novusbio.com)



[technical@novusbio.com](mailto:technical@novusbio.com)

Protocols, Publications, Related Products, Reviews, Research Tools and Images at:  
[www.novusbio.com/NBP2-59600](http://www.novusbio.com/NBP2-59600)

Updated 10/23/2024 v.20.1

Earn rewards for product  
reviews and publications.

Submit a publication at [www.novusbio.com/publications](http://www.novusbio.com/publications)

Submit a review at [www.novusbio.com/reviews/destination/NBP2-59600](http://www.novusbio.com/reviews/destination/NBP2-59600)



**NBP2-59600-100ug**

Creatine Kinase BB Antibody (2ba6)

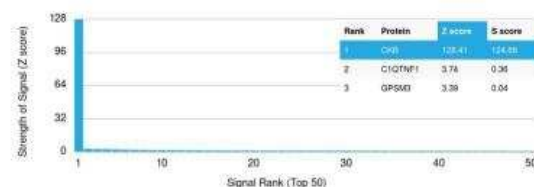
| Product Information         |   |
|-----------------------------|---|
| Unit Size                   | 100 ug  |
| Concentration               | 0.2 mg/ml   |
| Storage                     | Store at 4C.  |
| Clonality                   | Monoclonal  |
| Clone                       | 2ba6  |
| Preservative                | 0.05% Sodium Azide  |
| Isotype                     | IgG1 Kappa  |
| Purity                      | Protein A or G purified   |
| Buffer                      | 10 mM PBS with 0.05% BSA  |
| Product Description         |   |
| Description                 | <p>Human Chromosome Location:14q32</p> <p>200ug/ml of antibody purified from Bioreactor Concentrate by Protein A or G. Prepared in 10 mM PBS with 0.05% BSA &amp; 0.05% azide. Also available WITHOUT BSA &amp; azide at 1.0 mg/ml. (NBP2-59601)</p> <p>Antibody with azide - store at 2 to 8C. Antibody without azide - store at -20 to -80C.</p>  |
| Host                        | Mouse   |
| Gene ID                     | 1152  |
| Gene Symbol                 | CKB   |
| Species                     | Human   |
| Reactivity Notes            | Predicted to react with Chimpanzee, Rhesus Monkey, Canine, Bovine, Mouse, Rat, Chicken, Zebrafish, Frog.  |
| Specificity/Sensitivity     | <p>The specificity of this monoclonal antibody to its intended target was validated by HuProt™ Array, containing more than 19,000, full-length human proteins. The specificity of this monoclonal antibody to its intended target was validated by HuProt Array containing more than 19,000 full-length, correctly-folded human proteins. Creatine kinases (CK) are a large family of isoenzymes that regulate levels of ATP in subcellular compartments, where they provide ATP at sites of fluctuating energy demand by the transfer of phosphates between creatine and adenine nucleotides. CKs provide the energy of phosphate hydrolysis necessary to drive the normal function of many cellular systems. In cells, the cytosolic CK enzymes consist of two subunits, which can be either B (brain type) or M (muscle type). There are three different isoenzymes: CKMM, CKBB and CKMB. This monoclonal antibody recognizes the CKBB isoenzyme and does not react with the B subunit in CKMB. It shows minimal reactivity with other human serum proteins.</p> |
| Immunogen                   | Human Creatine Kinase BB protein (Uniprot: P12277)  |
| Product Application Details |   |
| Applications                | ELISA, Flow Cytometry, Immunocytochemistry/ Immunofluorescence, Immunohistochemistry, Immunohistochemistry-Frozen, Protein Array  |



|                              |  |
|------------------------------|--|
| <b>Recommended Dilutions</b> | Flow Cytometry 1-2 ug/million cells, ELISA, Immunohistochemistry, Immunocytochemistry/ Immunofluorescence 1-2 ug/ml, Immunohistochemistry-Frozen 1-2 ug/ml, Protein Array 1:100-1:2000 |
| <b>Application Notes</b>     | ELISA: For coating, order Ab without BSA.<br>Immunohistochemistry (Frozen Only): 1-2ug/ml for 30 minutes at RT.<br>Optimal dilution for a specific application should be determined.   |

## Images

Protein Array: Creatine Kinase BB Antibody (2ba6) [NBP2-59600] - containing more than 19,000 full-length human proteins. Z- and S-Score: The Z-score represents the strength of a signal that a monoclonal antibody (in combination with a fluorescently-tagged anti-IgG secondary antibody) produces when binding to a particular protein on the HuProt™ array. Z-scores are described in units of standard deviations above the mean value of all signals generated on that array. If targets on HuProt are arranged in descending order of the Z-score, the S-score is the difference between the Z-score. S-score therefore represents the relative target specificity of Ab to its intended target. A Ab is considered to specific to its intended target, if Ab has an S-score of at least 2.5. For example, if a MAb binds to protein X with a Z-score of 43 and to protein Y with a Z-score of 14, then the S-score for the binding of that MAb to protein X is equal to 29.



**Novus Biologicals USA**

10730 E. Briarwood Avenue  
Centennial, CO 80112  
USA  
Phone: 303.730.1950  
Toll Free: 1.888.506.6887  
Fax: 303.730.1966  
nb-customerservice@bio-techne.com

**Bio-Techne Canada**

21 Canmotor Ave  
Toronto, ON M8Z 4E6  
Canada  
Phone: 905.827.6400  
Toll Free: 855.668.8722  
Fax: 905.827.6402  
canada.inquires@bio-techne.com

**Bio-Techne Ltd**

19 Barton Lane  
Abingdon Science Park  
Abingdon, OX14 3NB, United Kingdom  
Phone: (44) (0) 1235 529449  
Free Phone: 0800 37 34 15  
Fax: (44) (0) 1235 533420  
info.EMEA@bio-techne.com

**General Contact Information**

[www.novusbio.com](http://www.novusbio.com)  
Technical Support: nb-technical@bio-techne.com  
Orders: nb-customerservice@bio-techne.com  
General: novus@novusbio.com

**Products Related to NBP2-59600-100ug**

---

|                  |   |
|------------------|---|
| HAF007           | Goat anti-Mouse IgG Secondary Antibody [HRP]            |
| NB720-B          | Rabbit anti-Mouse IgG (H+L) Secondary Antibody [Biotin] |
| NBP1-43319-0.5mg | Mouse IgG1 Kappa Isotype Control (P3.6.2.8.1)           |
| NBP1-84460PEP    | Creatine Kinase BB Recombinant Protein Antigen          |

---

**Limitations**

This product is for research use only and is not approved for use in humans or in clinical diagnosis. Primary Antibodies are guaranteed for 1 year from date of receipt.

For more information on our 100% guarantee, please visit [www.novusbio.com/guarantee](http://www.novusbio.com/guarantee)

Earn gift cards/discounts by submitting a review: [www.novusbio.com/reviews/submit/NBP2-59600](http://www.novusbio.com/reviews/submit/NBP2-59600)

Earn gift cards/discounts by submitting a publication using this product:  
[www.novusbio.com/publications](http://www.novusbio.com/publications)

