

Product Datasheet

Recombinant Human Protein Phosphatase 1C gamma His Protein

NBP2-59582-5ug

Unit Size: 5 ug

Store at 4C short term. Aliquot and store at -20C long term. Avoid freeze-thaw cycles.

www.novusbio.com



technical@novusbio.com

Protocols, Publications, Related Products, Reviews, Research Tools and Images at:
www.novusbio.com/NBP2-59582

Updated 10/23/2024 v.20.1

Earn rewards for product reviews and publications.

Submit a publication at www.novusbio.com/publications

Submit a review at www.novusbio.com/reviews/destination/NBP2-59582



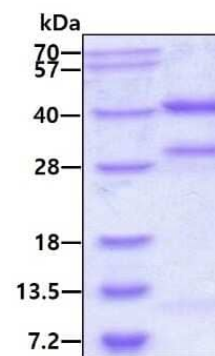
NBP2-59582-5ug

Recombinant Human Protein Phosphatase 1C gamma His Protein

Product Information	
Unit Size	5 ug
Concentration	0.25 mg/ml
Storage	Store at 4C short term. Aliquot and store at -20C long term. Avoid freeze-thaw cycles.
Preservative	No Preservative
Purity	>85%, by SDS-PAGE
Buffer	20 mM Tris-HCl buffer (pH8.0), 50% glycerol, 0.2 M NaCl, 2 mM DTT
Target Molecular Weight	39.1 kDa
Product Description	
Description	<p>A bioactive recombinant protein with a N-Terminal His-tag and corresponding to the amino acids 1-323 of Human Protein Phosphatase 1C gamma</p> <p>Source: <i>E.coli</i></p> <p>Amino Acid Sequence: MGSSHHHHHH SGLVPRGSH MADLDKLNID SIIQRLLLEVR GSKPGKNVQL QENEIRGLCL KSREIFLSQP ILLELEAPLK ICGDIHGQYY DLLRLFYGG FPPESNYLFL GDYVDRGKQS LETICLLLAY KIKYPENFFL LRGNHECASI NRIYGFYDEC KRRYNIKLWK TFTDCFNCLP IAAIVDEKIF CCHGGLSPDL QSMEQIRIM RPTDVPDQGL LCDLLWSDPD KDVLGWGEND RGVSFTFGAE VVAKFLHKHD LDLICRAHQV VEDGYEFFAK RQLVTLFSAP NYCGEFDNAG AMMSVDETLM CSFQILKPAE KKKPNATRPV TPRGMITKQ AKK</p>
Gene ID	5501
Gene Symbol	PPP1CC
Species	Human
Details of Functionality	Specific activity is > 700 units/mg, and is defined as the amount of enzyme that hydrolyze 1.0 nmole of p-nitrophenyl phosphate (pNPP) per minute at pH 7.5 at 37C.
Product Application Details	
Applications	SDS-Page, Enzyme Activity
Recommended Dilutions	SDS-Page, Enzyme Activity

Images

SDS-Page: Recombinant Human Protein Phosphatase 1C gamma His Protein [NBP2-59582] - 3ug by SDS-PAGE under reducing condition and visualized by coomassie blue stain.





Novus Biologicals USA

10730 E. Briarwood Avenue
Centennial, CO 80112
USA
Phone: 303.730.1950
Toll Free: 1.888.506.6887
Fax: 303.730.1966
nb-customerservice@bio-techne.com

Bio-Techne Canada

21 Canmotor Ave
Toronto, ON M8Z 4E6
Canada
Phone: 905.827.6400
Toll Free: 855.668.8722
Fax: 905.827.6402
canada.inquires@bio-techne.com

Bio-Techne Ltd

19 Barton Lane
Abingdon Science Park
Abingdon, OX14 3NB, United Kingdom
Phone: (44) (0) 1235 529449
Free Phone: 0800 37 34 15
Fax: (44) (0) 1235 533420
info.EMEA@bio-techne.com

General Contact Information

www.novusbio.com
Technical Support: nb-technical@bio-techne.com
Orders: nb-customerservice@bio-techne.com
General: novus@novusbio.com

Products Related to NBP2-59582-5ug

AF887	AKT [p Ser473] Antibody [Unconjugated] - Pan Specific
NBP1-32858	Protein Phosphatase 1C gamma Antibody
MAB1417	Insulin Antibody (182410) [Unconjugated]
NB300-581-10uL	SERCA2 ATPase Antibody (2A7-A1)

Limitations

This product is for research use only and is not approved for use in humans or in clinical diagnosis. Peptides and proteins are guaranteed for 3 months from date of receipt.

For more information on our 100% guarantee, please visit www.novusbio.com/guarantee

Earn gift cards/discounts by submitting a review: www.novusbio.com/reviews/submit/NBP2-59582

Earn gift cards/discounts by submitting a publication using this product:
www.novusbio.com/publications

