

# Product Datasheet

## epithelial Sodium Channel alpha Antibody (2G4) - BSA Free NBP2-59382

Unit Size: 100 ug

Store at -20C.

[www.novusbio.com](http://www.novusbio.com)



[technical@novusbio.com](mailto:technical@novusbio.com)

Protocols, Publications, Related Products, Reviews, Research Tools and Images at:  
[www.novusbio.com/NBP2-59382](http://www.novusbio.com/NBP2-59382)

Updated 2/23/2025 v.20.1

Earn rewards for product  
reviews and publications.

Submit a publication at [www.novusbio.com/publications](http://www.novusbio.com/publications)

Submit a review at [www.novusbio.com/reviews/destination/NBP2-59382](http://www.novusbio.com/reviews/destination/NBP2-59382)



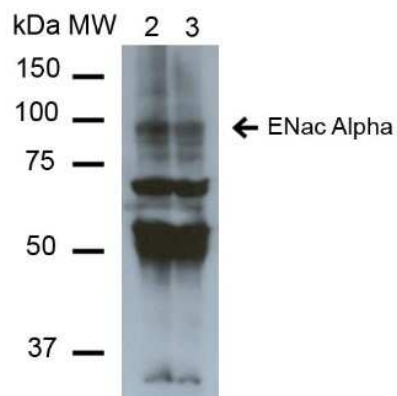
**NBP2-59382**

epithelial Sodium Channel alpha Antibody (2G4) - BSA Free

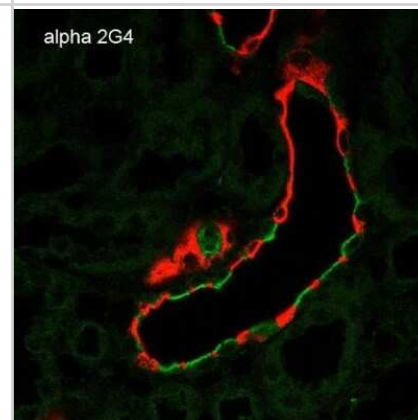
<b>Product Information</b>	
<b>Unit Size</b>	100 ug
<b>Concentration</b>	Please see the vial label for concentration. If unlisted please contact technical services.
<b>Storage</b>	Store at -20C.
<b>Clonality</b>	Monoclonal
<b>Clone</b>	2G4
<b>Preservative</b>	0.09% Sodium Azide
<b>Isotype</b>	IgG2b
<b>Purity</b>	Protein G purified
<b>Buffer</b>	PBS (pH 7.4), 50% Glycerol
<b>Product Description</b>	
<b>Host</b>	Mouse
<b>Gene ID</b>	6337
<b>Gene Symbol</b>	SCNN1A
<b>Species</b>	Mouse, Rat
<b>Specificity/Sensitivity</b>	Detects 85kDa.
<b>Immunogen</b>	Synthetic peptide from the N-terminal of Rat ENaC alpha (aa. 46-68)
<b>Product Application Details</b>	
<b>Applications</b>	Western Blot, Immunohistochemistry
<b>Recommended Dilutions</b>	Western Blot 1:1000, Immunohistochemistry 1:150

## Images

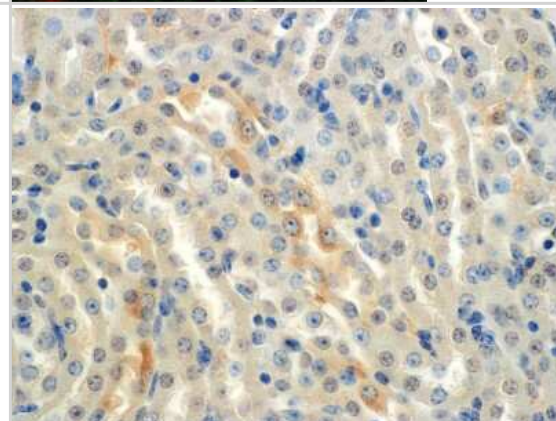
Western Blot: epithelial Sodium Channel alpha Antibody (2G4) [NBP2-59382] - Analysis of Mouse Whole kidney homogenates showing detection of ~85kDa ENaC alpha protein using Mouse Anti-epithelial Sodium Channel alpha Monoclonal Antibody, Clone 2G4. Lane 1: Molecular Weight Ladder (MW). Lane 2: Low-salt diet. Lane 3: Normal-salt diet. Load: 20 ug. Primary Antibody: Mouse Anti-ENaC alpha Monoclonal Antibody at 1:1000. Predicted/Observed Size: ~85kDa.



Immunohistochemistry: epithelial Sodium Channel alpha Antibody (2G4) [NBP2-59382] - Immunohistochemistry analysis using Mouse Anti-epithelial Sodium Channel alpha Monoclonal Antibody, Clone 2G4 (NBP2-59382). Tissue: Kidney. Species: Rat. Fixation: Paraffin-embedded formalin-fixed. Primary Antibody: Mouse Anti-epithelial Sodium Channel alpha Monoclonal Antibody (NBP2-59382) at 1:100. Secondary Antibody: Goat Anti-Mouse ATTO 488 (green). Localization: Intercalated cells. Aquaporin 2 Antibody staining in red.



Immunohistochemistry: epithelial Sodium Channel alpha Antibody (2G4) [NBP2-59382] - Immunohistochemistry analysis using Mouse Anti-epithelial Sodium Channel alpha Monoclonal Antibody, Clone 2G4 (NBP2-59382). Tissue: Kidney (cortex). Species: Mouse. Primary Antibody: Mouse Anti-epithelial Sodium Channel alpha Monoclonal Antibody (NBP2-59382) at 1:150. Localization: Collecting duct principal cells. Magnification: 60X.





### **Novus Biologicals USA**

10730 E. Briarwood Avenue  
Centennial, CO 80112  
USA  
Phone: 303.730.1950  
Toll Free: 1.888.506.6887  
Fax: 303.730.1966  
nb-customerservice@bio-techne.com

### **Bio-Techne Canada**

21 Canmotor Ave  
Toronto, ON M8Z 4E6  
Canada  
Phone: 905.827.6400  
Toll Free: 855.668.8722  
Fax: 905.827.6402  
canada.inquires@bio-techne.com

### **Bio-Techne Ltd**

19 Barton Lane  
Abingdon Science Park  
Abingdon, OX14 3NB, United Kingdom  
Phone: (44) (0) 1235 529449  
Free Phone: 0800 37 34 15  
Fax: (44) (0) 1235 533420  
info.EMEA@bio-techne.com

### **General Contact Information**

www.novusbio.com  
Technical Support: nb-technical@bio-techne.com  
Orders: nb-customerservice@bio-techne.com  
General: novus@novusbio.com

### **Products Related to NBP2-59382**

---

HAF007	Goat anti-Mouse IgG Secondary Antibody [HRP]
NB720-B	Rabbit anti-Mouse IgG (H+L) Secondary Antibody [Biotin]
NBP2-27231	Mouse IgG2b Isotype Control (MPC-11)
NBP1-84846PEP	epithelial Sodium Channel alpha Recombinant Protein Antigen

---

### **Limitations**

This product is for research use only and is not approved for use in humans or in clinical diagnosis. Primary Antibodies are guaranteed for 1 year from date of receipt.

For more information on our 100% guarantee, please visit [www.novusbio.com/guarantee](http://www.novusbio.com/guarantee)

Earn gift cards/discounts by submitting a review: [www.novusbio.com/reviews/submit/NBP2-59382](http://www.novusbio.com/reviews/submit/NBP2-59382)

Earn gift cards/discounts by submitting a publication using this product:  
[www.novusbio.com/publications](http://www.novusbio.com/publications)

