

# Product Datasheet

## TET2 Antibody (C.15200179) - BSA Free NBP2-59256

Unit Size: 50 ug

Store at -20C. Avoid freeze-thaw cycles.

[www.novusbio.com](http://www.novusbio.com)



[technical@novusbio.com](mailto:technical@novusbio.com)

Protocols, Publications, Related Products, Reviews, Research Tools and Images at:  
[www.novusbio.com/NBP2-59256](http://www.novusbio.com/NBP2-59256)

Updated 2/23/2025 v.20.1

Earn rewards for product  
reviews and publications.

Submit a publication at [www.novusbio.com/publications](http://www.novusbio.com/publications)

Submit a review at [www.novusbio.com/reviews/destination/NBP2-59256](http://www.novusbio.com/reviews/destination/NBP2-59256)



**NBP2-59256**

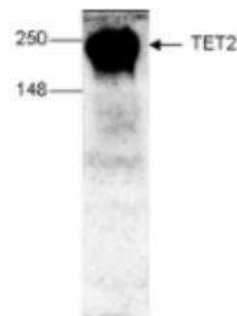
TET2 Antibody (C.15200179) - BSA Free

<b>Product Information</b>	
<b>Unit Size</b>	50 ug
<b>Concentration</b>	Please see the vial label for concentration. If unlisted please contact technical services.
<b>Storage</b>	Store at -20C. Avoid freeze-thaw cycles.
<b>Clonality</b>	Monoclonal
<b>Clone</b>	C.15200179
<b>Preservative</b>	0.05% Sodium Azide
<b>Isotype</b>	IgG1
<b>Purity</b>	Protein G purified
<b>Buffer</b>	PBS
<b>Product Description</b>	
<b>Host</b>	Mouse
<b>Gene ID</b>	54790
<b>Gene Symbol</b>	TET2
<b>Species</b>	Human, Mouse
<b>Immunogen</b>	The exact immunogen is proprietary information.
<b>Product Application Details</b>	
<b>Applications</b>	Western Blot, Immunoprecipitation
<b>Recommended Dilutions</b>	Western Blot 1:1000 - 1:2000, Immunoprecipitation 5 ug/mg

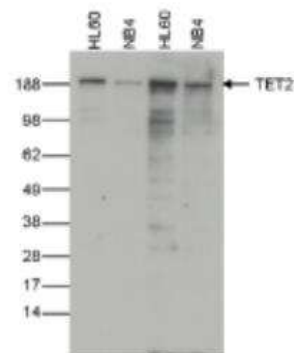


## Images

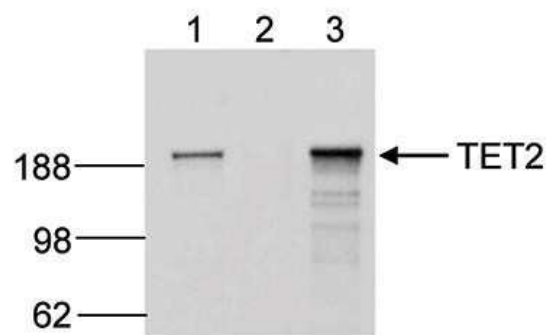
Western Blot: TET2 Antibody (C.15200179) [NBP2-59256] - Mouse E14 ES cells. The antibody was used at a dilution of 1:1,000.



Western Blot: TET2 Antibody (C.15200179) [NBP2-59256] - Whole cell extracts from HL60 and NB4 cells (40 ug) were analysed by Western blot using the Diagenode antibody against TET2, diluted 1:2,000 (lane 1 and 2) or 1:1,000 (lane 3 and 4) in PBS containing 10% milk. The position of the protein of interest (expected MW 224 kDa) is indicated on the right; the marker (kDa) is shown on the left.



Immunoprecipitation: TET2 Antibody (C.15200179) [NBP2-59256] - IP was performed on 250 ug HL60 RIPA cell lysate using the antibody against TET2 (lane 3) or an IgG negative control (lane 2). The samples were analysed by Western blot. The input sample (25 ug RIPA lysate) was used as a positive control (lane 1).





### **Novus Biologicals USA**

10730 E. Briarwood Avenue  
Centennial, CO 80112  
USA  
Phone: 303.730.1950  
Toll Free: 1.888.506.6887  
Fax: 303.730.1966  
nb-customerservice@bio-techne.com

### **Bio-Techne Canada**

21 Canmotor Ave  
Toronto, ON M8Z 4E6  
Canada  
Phone: 905.827.6400  
Toll Free: 855.668.8722  
Fax: 905.827.6402  
canada.inquires@bio-techne.com

### **Bio-Techne Ltd**

19 Barton Lane  
Abingdon Science Park  
Abingdon, OX14 3NB, United Kingdom  
Phone: (44) (0) 1235 529449  
Free Phone: 0800 37 34 15  
Fax: (44) (0) 1235 533420  
info.EMEA@bio-techne.com

### **General Contact Information**

www.novusbio.com  
Technical Support: nb-technical@bio-techne.com  
Orders: nb-customerservice@bio-techne.com  
General: novus@novusbio.com

### **Products Related to NBP2-59256**

---

HAF007	Goat anti-Mouse IgG Secondary Antibody [HRP]
NB720-B	Rabbit anti-Mouse IgG (H+L) Secondary Antibody [Biotin]
NBP1-97005-0.5mg	Mouse IgG1 Isotype Control (MG1)
NBP2-27465PEP	TET2 Antibody Blocking Peptide

---

### **Limitations**

This product is for research use only and is not approved for use in humans or in clinical diagnosis. Primary Antibodies are guaranteed for 1 year from date of receipt.

For more information on our 100% guarantee, please visit [www.novusbio.com/guarantee](http://www.novusbio.com/guarantee)

Earn gift cards/discounts by submitting a review: [www.novusbio.com/reviews/submit/NBP2-59256](http://www.novusbio.com/reviews/submit/NBP2-59256)

Earn gift cards/discounts by submitting a publication using this product:  
[www.novusbio.com/publications](http://www.novusbio.com/publications)

