

Product Datasheet

CTCF Antibody - BSA Free

NBP2-59228

Unit Size: 50 ug

Store at -20C. Avoid freeze-thaw cycles.

www.novusbio.com



technical@novusbio.com

Protocols, Publications, Related Products, Reviews, Research Tools and Images at:
www.novusbio.com/NBP2-59228

Updated 2/23/2025 v.20.1

Earn rewards for product
reviews and publications.

Submit a publication at www.novusbio.com/publications

Submit a review at www.novusbio.com/reviews/destination/NBP2-59228



NBP2-59228

CTCF Antibody - BSA Free

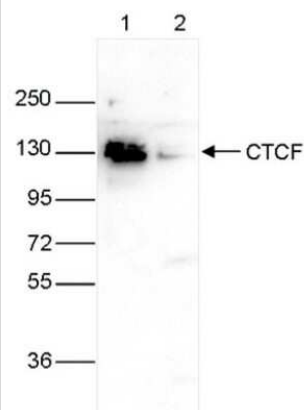
Product Information	
Unit Size	50 ug
Concentration	Please see the vial label for concentration. If unlisted please contact technical services.
Storage	Store at -20C. Avoid freeze-thaw cycles.
Clonality	Polyclonal
Preservative	0.05% Sodium Azide and 0.05% ProClin 300
Isotype	IgG
Purity	Peptide affinity purified
Buffer	PBS

Product Description	
Host	Rabbit
Gene ID	10664
Gene Symbol	CTCF
Species	Human
Immunogen	The exact immunogen is proprietary information.

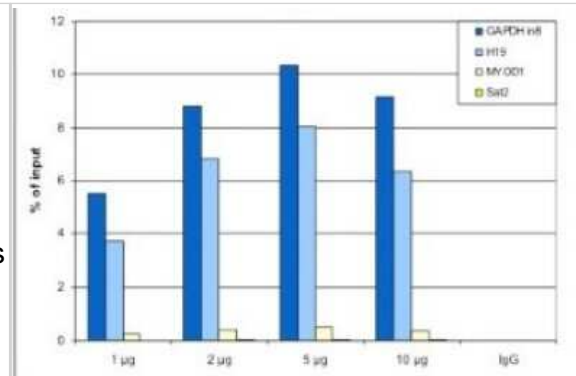
Product Application Details	
Applications	Western Blot, ELISA, Immunocytochemistry/ Immunofluorescence, Chromatin Immunoprecipitation (ChIP), Chromatin Immunoprecipitation Sequencing, Knockdown Validated
Recommended Dilutions	Western Blot 1:1000, ELISA 1:10000, Immunocytochemistry/ Immunofluorescence 1:200, Chromatin Immunoprecipitation (ChIP) 1 ug/IP, Chromatin Immunoprecipitation Sequencing, Knockdown Validated

Images

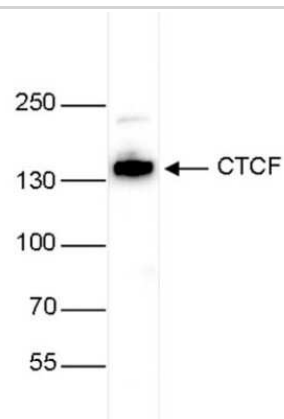
Western Blot: CTCF Antibody [NBP2-59228] - Whole cell extracts (40 ug) from HeLa cells transfected with CTCF siRNA (lane 2) and from an untransfected control (lane 1) were analysed by Western blot using the antibody against CTCF diluted 1:1,000 in TBS-Tween containing 5% skimmed milk. The position of the protein of interest is indicated on the right; the marker (kDa) is shown on the left.



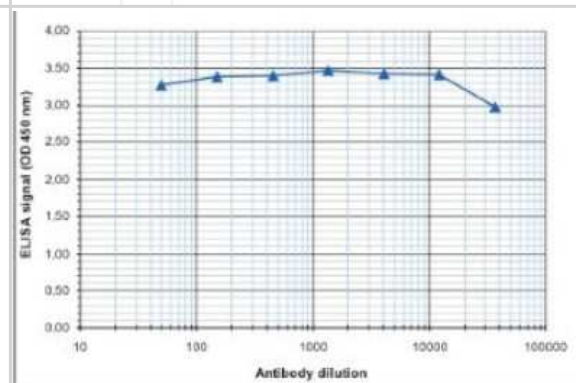
Chromatin Immunoprecipitation: CTCF Antibody [NBP2-59228] - ChIP was performed with the antibody against CTCF on sheared chromatin from 4,000,000 HeLa cells. A titration consisting of 1, 2, 5 and 10 ug of antibody per ChIP experiment was analyzed. IgG (2 ug/IP) was used as a negative IP control. Quantitative PCR was performed with optimized primers for the H19 imprinting control region, and a specific region in the GAPDH gene, used as positive controls, and for the MYOD1 gene and the Sat2 satellite repeat region, used as a negative control. Figure shows the recovery, expressed as a % of input (the relative amount of immunoprecipitated DNA compared to input DNA after qPCR analysis).



Western Blot: CTCF Antibody [NBP2-59228] - Whole cell extracts (25 ug) from HeLa cells were analysed by Western blot using the antibody against CTCF diluted 1:1,000 in TBS-Tween containing 5% skimmed milk. The position of the protein of interest is indicated on the right; the marker (kDa) is shown on the left.



ELISA: CTCF Antibody [NBP2-59228] - To determine the titer of the antibody, an ELISA was performed using a serial dilution of the antibody against CTCF. The plates were coated with the peptides used for immunization of the rabbit. By plotting the absorbance against the antibody dilution, the titer of the antibody was estimated to be >1:500,000.



Immunofluorescence: CTCF Antibody [NBP2-59228] - HeLa cells were stained with the antibody against CTCF and with DAPI. Cells were fixed with 4% formaldehyde for 10 minutes and blocked with PBS/TX-100 containing 5% normal goat serum and 1% BSA. The cells were immunofluorescently labeled with the CTCF antibody (left) diluted 1:200 in blocking solution followed by an anti-rabbit antibody conjugated to Alexa Fluor 488. The middle panel shows staining of the nuclei with DAPI. A merge of the two stainings is shown on the right.





Novus Biologicals USA

10730 E. Briarwood Avenue
Centennial, CO 80112
USA
Phone: 303.730.1950
Toll Free: 1.888.506.6887
Fax: 303.730.1966
nb-customerservice@bio-techne.com

Bio-Techne Canada

21 Canmotor Ave
Toronto, ON M8Z 4E6
Canada
Phone: 905.827.6400
Toll Free: 855.668.8722
Fax: 905.827.6402
canada.inquires@bio-techne.com

Bio-Techne Ltd

19 Barton Lane
Abingdon Science Park
Abingdon, OX14 3NB, United Kingdom
Phone: (44) (0) 1235 529449
Free Phone: 0800 37 34 15
Fax: (44) (0) 1235 533420
info.EMEA@bio-techne.com

General Contact Information

www.novusbio.com
Technical Support: nb-technical@bio-techne.com
Orders: nb-customerservice@bio-techne.com
General: novus@novusbio.com

Products Related to NBP2-59228

HAF008	Goat anti-Rabbit IgG Secondary Antibody [HRP]
NB7160	Goat anti-Rabbit IgG (H+L) Secondary Antibody [HRP]
NBP2-24891	Rabbit IgG Isotype Control
H00010664-P01-2ug	Recombinant Human CTCF GST (N-Term) Protein

Limitations

This product is for research use only and is not approved for use in humans or in clinical diagnosis. Primary Antibodies are guaranteed for 1 year from date of receipt.

For more information on our 100% guarantee, please visit www.novusbio.com/guarantee

Earn gift cards/discounts by submitting a review: www.novusbio.com/reviews/submit/NBP2-59228

Earn gift cards/discounts by submitting a publication using this product:
www.novusbio.com/publications

