

# Product Datasheet

## LAMP-1/CD107a Antibody (CL4489) - BSA Free NBP2-59053

Unit Size: 100 ul

Store at 4C short term. Aliquot and store at -20C long term. Avoid freeze-thaw cycles.

[www.novusbio.com](http://www.novusbio.com)



[technical@novusbio.com](mailto:technical@novusbio.com)

Protocols, Publications, Related Products, Reviews, Research Tools and Images at:  
[www.novusbio.com/NBP2-59053](http://www.novusbio.com/NBP2-59053)

Updated 2/27/2025 v.20.1

Earn rewards for product  
reviews and publications.

Submit a publication at [www.novusbio.com/publications](http://www.novusbio.com/publications)

Submit a review at [www.novusbio.com/reviews/destination/NBP2-59053](http://www.novusbio.com/reviews/destination/NBP2-59053)



**NBP2-59053**

LAMP-1/CD107a Antibody (CL4489) - BSA Free

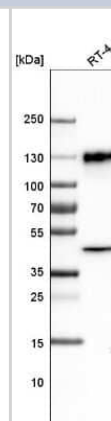
Product Information	
Unit Size	100 ul
Concentration	Concentrations vary lot to lot. See vial label for concentration. If unlisted please contact technical services.
Storage	Store at 4C short term. Aliquot and store at -20C long term. Avoid freeze-thaw cycles.
Clonality	Monoclonal
Clone	CL4489
Preservative	0.02% Sodium Azide
Isotype	IgG2b
Purity	Protein A purified
Buffer	PBS (pH 7.2) and 40% Glycerol

Product Description	
Host	Mouse
Gene ID	3916
Gene Symbol	LAMP1
Species	Human
Immunogen	This antibody was developed using a synthetic peptide derived from P11279, with the exact immunogen sequence remaining proprietary.

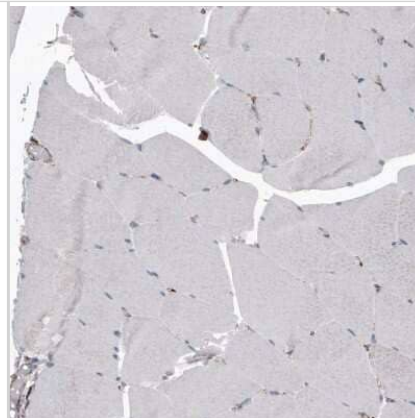
Product Application Details	
Applications	Western Blot, Immunohistochemistry, Immunohistochemistry-Paraffin
Recommended Dilutions	Western Blot 1 ug/ml, Immunohistochemistry 1:500 - 1:1000, Immunohistochemistry-Paraffin 1:500 - 1:1000
Application Notes	For IHC-Paraffin, HIER pH 6 retrieval is recommended.

**Images**

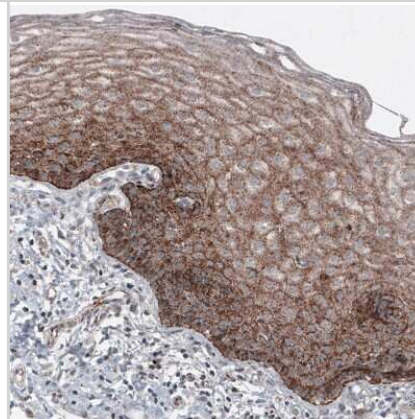
Western Blot: LAMP-1/CD107a Antibody (CL4489) [NBP2-59053] - Analysis in human cell line RT-4.



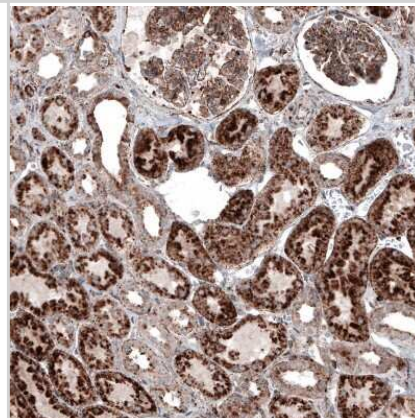
Immunohistochemistry-Paraffin: LAMP-1/CD107a Antibody (CL4489) [NBP2-59053] - Staining of human skeletal muscle shows only weak cytoplasmic positivity in muscle fibers.



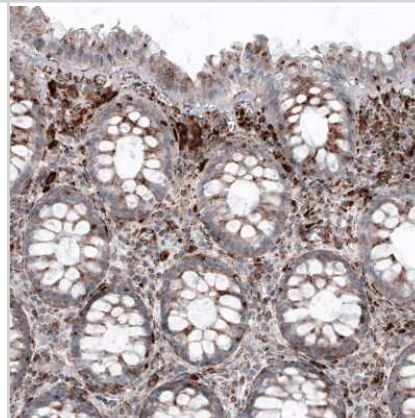
Immunohistochemistry-Paraffin: LAMP-1/CD107a Antibody (CL4489) [NBP2-59053] - Staining of human cervix shows granular cytoplasmic immunoreactivity in squamous epithelium cells.



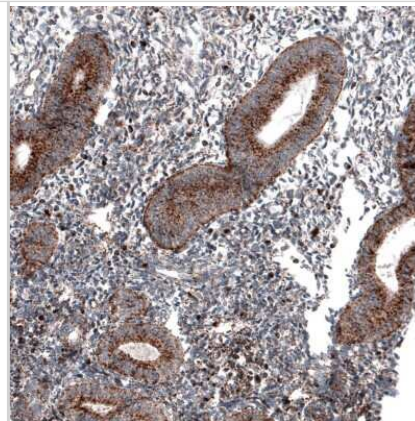
Immunohistochemistry-Paraffin: LAMP-1/CD107a Antibody (CL4489) [NBP2-59053] - Staining of human kidney shows strong granular cytoplasmic positivity in renal tubules and glomeruli.



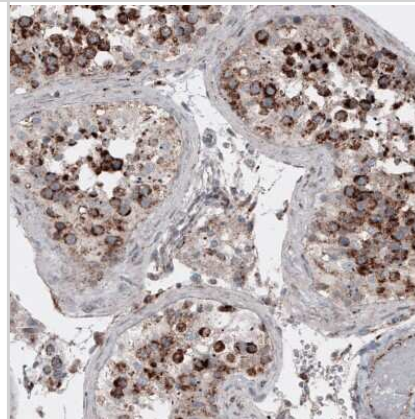
Immunohistochemistry-Paraffin: LAMP-1/CD107a Antibody (CL4489) [NBP2-59053] - Staining of human rectum shows granular cytoplasmic immunoreactivity in glandular cells and in lymphoid cells.



Immunohistochemistry-Paraffin: LAMP-1/CD107a Antibody (CL4489) [NBP2-59053] - Staining of human endometrium shows granular cytoplasmic positivity in glandular cells.



Immunohistochemistry-Paraffin: LAMP-1/CD107a Antibody (CL4489) [NBP2-59053] - Staining of human testis shows cytoplasmic positivity in cells in seminiferous tubules.





### **Novus Biologicals USA**

10730 E. Briarwood Avenue  
Centennial, CO 80112  
USA  
Phone: 303.730.1950  
Toll Free: 1.888.506.6887  
Fax: 303.730.1966  
nb-customerservice@bio-techne.com

### **Bio-Techne Canada**

21 Canmotor Ave  
Toronto, ON M8Z 4E6  
Canada  
Phone: 905.827.6400  
Toll Free: 855.668.8722  
Fax: 905.827.6402  
canada.inquires@bio-techne.com

### **Bio-Techne Ltd**

19 Barton Lane  
Abingdon Science Park  
Abingdon, OX14 3NB, United Kingdom  
Phone: (44) (0) 1235 529449  
Free Phone: 0800 37 34 15  
Fax: (44) (0) 1235 533420  
info.EMEA@bio-techne.com

### **General Contact Information**

www.novusbio.com  
Technical Support: nb-technical@bio-techne.com  
Orders: nb-customerservice@bio-techne.com  
General: novus@novusbio.com

### **Products Related to NBP2-59053**

---

HAF007	Goat anti-Mouse IgG Secondary Antibody [HRP]
NB720-B	Rabbit anti-Mouse IgG (H+L) Secondary Antibody [Biotin]
NBP2-27231	Mouse IgG2b Isotype Control (MPC-11)
NBP2-59780PEP	LAMP-1/CD107a Recombinant Protein Antigen

---

### **Limitations**

This product is for research use only and is not approved for use in humans or in clinical diagnosis. Primary Antibodies are guaranteed for 1 year from date of receipt.

For more information on our 100% guarantee, please visit [www.novusbio.com/guarantee](http://www.novusbio.com/guarantee)

Earn gift cards/discounts by submitting a review: [www.novusbio.com/reviews/submit/NBP2-59053](http://www.novusbio.com/reviews/submit/NBP2-59053)

Earn gift cards/discounts by submitting a publication using this product:  
[www.novusbio.com/publications](http://www.novusbio.com/publications)

