

# Product Datasheet

## SOX10 Antibody (CL4455) - BSA Free NBP2-59050

Unit Size: 100 ul

Store at 4C short term. Aliquot and store at -20C long term. Avoid freeze-thaw cycles.

[www.novusbio.com](http://www.novusbio.com)



[technical@novusbio.com](mailto:technical@novusbio.com)

**Reviews: 1**

Protocols, Publications, Related Products, Reviews, Research Tools and Images at:  
[www.novusbio.com/NBP2-59050](http://www.novusbio.com/NBP2-59050)

Updated 2/27/2025 v.20.1

Earn rewards for product  
reviews and publications.

Submit a publication at [www.novusbio.com/publications](http://www.novusbio.com/publications)

Submit a review at [www.novusbio.com/reviews/destination/NBP2-59050](http://www.novusbio.com/reviews/destination/NBP2-59050)



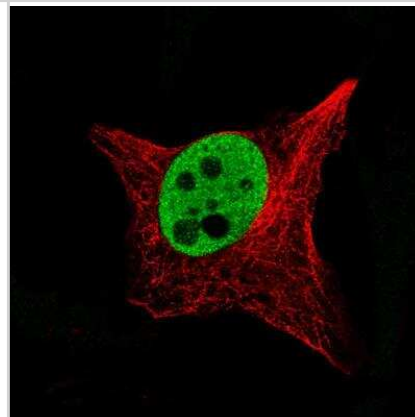
**NBP2-59050**

SOX10 Antibody (CL4455) - BSA Free

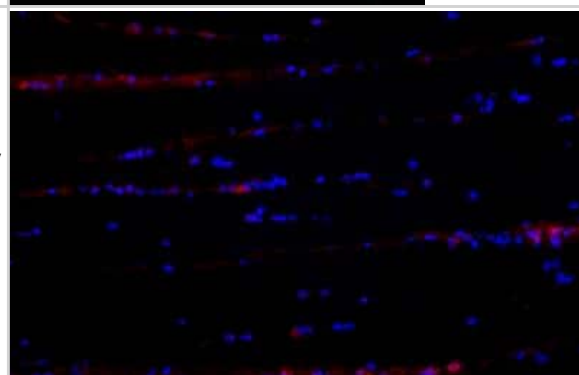
<b>Product Information</b>	
<b>Unit Size</b>	100 ul
<b>Concentration</b>	Concentrations vary lot to lot. See vial label for concentration. If unlisted please contact technical services.
<b>Storage</b>	Store at 4C short term. Aliquot and store at -20C long term. Avoid freeze-thaw cycles.
<b>Clonality</b>	Monoclonal
<b>Clone</b>	CL4455
<b>Preservative</b>	0.02% Sodium Azide
<b>Isotype</b>	IgG1
<b>Purity</b>	Protein A purified
<b>Buffer</b>	PBS (pH 7.2) and 40% Glycerol
<b>Product Description</b>	
<b>Host</b>	Mouse
<b>Gene ID</b>	6663
<b>Gene Symbol</b>	SOX10
<b>Species</b>	Human, Mouse, Feline
<b>Reactivity Notes</b>	Feline reactivity reported from a verified customer review. Please note that this antibody is reactive to Mouse and derived from the same host, Mouse. Mouse-On-Mouse blocking reagent may be needed for IHC and ICC experiments to reduce high background signal. You can find these reagents under catalog numbers PK-2200-NB and MP-2400-NB. Please contact Technical Support if you have any questions
<b>Immunogen</b>	This antibody was developed using a recombinant protein derived from P56693, with the exact immunogen sequence remaining proprietary.
<b>Product Application Details</b>	
<b>Applications</b>	Immunocytochemistry/ Immunofluorescence, Immunohistochemistry, Immunohistochemistry-Frozen, Immunohistochemistry-Paraffin
<b>Recommended Dilutions</b>	Immunohistochemistry 1:2500 - 1:5000, Immunocytochemistry/ Immunofluorescence 2-10 ug/ml, Immunohistochemistry-Paraffin 1:2500 - 1:5000, Immunohistochemistry-Frozen Validated from a verified customer review.
<b>Application Notes</b>	For IHC-Paraffin, HIER pH 6 retrieval is recommended. ICC/IF Fixation Permeabilization: Use PFA/Triton X-100.

## Images

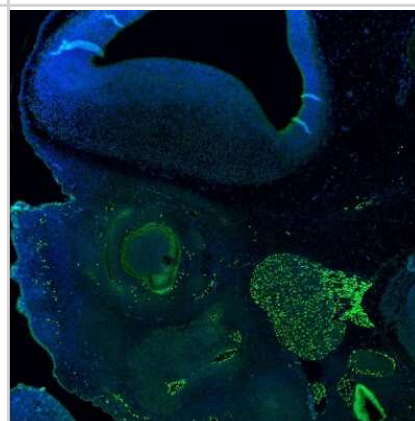
Immunocytochemistry/Immunofluorescence: SOX10 Antibody (CL4455) [NBP2-59050] - staining of SK-MEL-30 cells using the Anti-SOX10 monoclonal antibody, showing specific staining in the nucleoplasm in green. Microtubule- and nuclear probes are visualized in red and blue, respectively (where available). Antibody staining is shown in green.



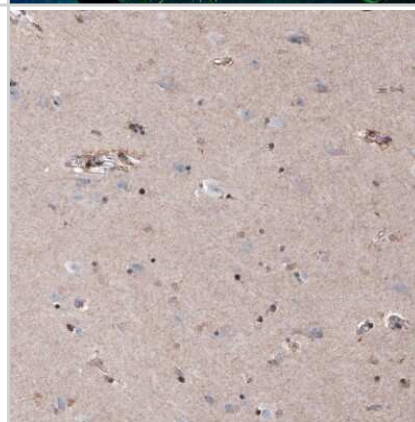
Immunohistochemistry-Frozen: SOX10 Antibody (CL4455) [NBP2-59050] - Feline adult spinal cord demonstrating SOX10 (red) and DAPI (blue). Antibody at 1:200 dilution in 1X PBS + 0.05% tween 20+ 2% BSA. Tested at 1:50, 1:100, 1:200, 1:500, and 1:1000. Dilution of 1:200 gave the best signal/noise ratio for IHC-Fr. The slides were subsequently incubated with Alexa Fluor conjugated secondary antibody for 1hr at RT and imaged with fluorescent microscopy. Image submitted by a verified customer review.



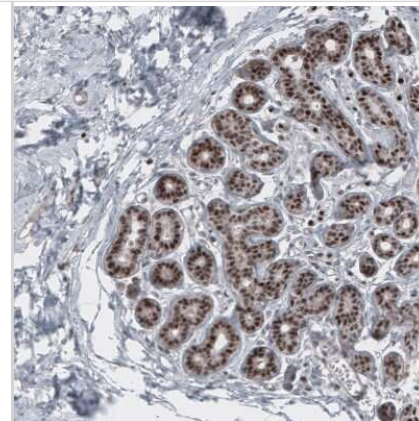
Immunohistochemistry: SOX10 Antibody (CL4455) [NBP2-59050] - Staining of mouse embryo E11 shows nuclear immunoreactivity in the developing trigeminal ganglion and ear placode.



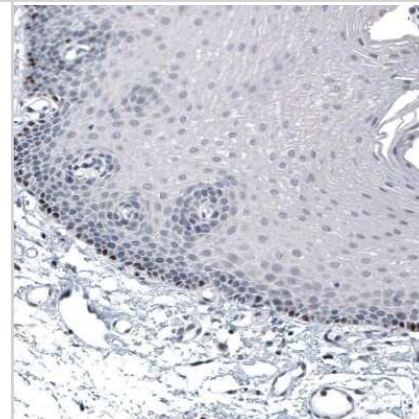
Immunohistochemistry-Paraffin: SOX10 Antibody (CL4455) [NBP2-59050] - Staining of human cerebral cortex shows strong nuclear immunoreactivity in a subset of glial cells.



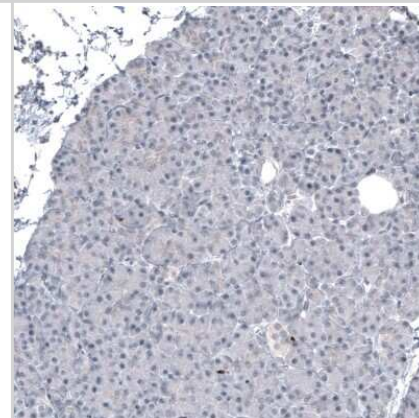
Immunohistochemistry-Paraffin: SOX10 Antibody (CL4455) [NBP2-59050] - Staining of human breast shows strong nuclear positivity in glandular cells.



Immunohistochemistry-Paraffin: SOX10 Antibody (CL4455) [NBP2-59050] - Staining of human cervix shows nuclear immunoreactivity in a subset of basal cells in squamous epithelium.



Immunohistochemistry-Paraffin: SOX10 Antibody (CL4455) [NBP2-59050] - Staining of human pancreas shows absence of positivity as expected (negative control).





### **Novus Biologicals USA**

10730 E. Briarwood Avenue  
Centennial, CO 80112  
USA  
Phone: 303.730.1950  
Toll Free: 1.888.506.6887  
Fax: 303.730.1966  
nb-customerservice@bio-techne.com

### **Bio-Techne Canada**

21 Canmotor Ave  
Toronto, ON M8Z 4E6  
Canada  
Phone: 905.827.6400  
Toll Free: 855.668.8722  
Fax: 905.827.6402  
canada.inquires@bio-techne.com

### **Bio-Techne Ltd**

19 Barton Lane  
Abingdon Science Park  
Abingdon, OX14 3NB, United Kingdom  
Phone: (44) (0) 1235 529449  
Free Phone: 0800 37 34 15  
Fax: (44) (0) 1235 533420  
info.EMEA@bio-techne.com

### **General Contact Information**

www.novusbio.com  
Technical Support: nb-technical@bio-techne.com  
Orders: nb-customerservice@bio-techne.com  
General: novus@novusbio.com

### **Products Related to NBP2-59050**

---

NBP2-59050PEP	SOX10 Recombinant Protein Antigen
HAF007	Goat anti-Mouse IgG Secondary Antibody [HRP]
NB720-B	Rabbit anti-Mouse IgG (H+L) Secondary Antibody [Biotin]
NBP1-97005-0.5mg	Mouse IgG1 Isotype Control (MG1)

---

### **Limitations**

This product is for research use only and is not approved for use in humans or in clinical diagnosis. Primary Antibodies are guaranteed for 1 year from date of receipt.

For more information on our 100% guarantee, please visit [www.novusbio.com/guarantee](http://www.novusbio.com/guarantee)

Earn gift cards/discounts by submitting a review: [www.novusbio.com/reviews/submit/NBP2-59050](http://www.novusbio.com/reviews/submit/NBP2-59050)

Earn gift cards/discounts by submitting a publication using this product:  
[www.novusbio.com/publications](http://www.novusbio.com/publications)

