

Product Datasheet

Rev-erb beta/NR1D2 Antibody - BSA Free NBP2-56141

Unit Size: 100 ul

Store at 4C short term. Aliquot and store at -20C long term. Avoid freeze-thaw cycles.

www.novusbio.com



technical@novusbio.com

Publications: 1

Protocols, Publications, Related Products, Reviews, Research Tools and Images at:
www.novusbio.com/NBP2-56141

Updated 2/23/2025 v.20.1

Earn rewards for product
reviews and publications.

Submit a publication at www.novusbio.com/publications

Submit a review at www.novusbio.com/reviews/destination/NBP2-56141



NBP2-56141

Rev-erb beta/NR1D2 Antibody - BSA Free

Product Information

Unit Size	100 ul
Concentration	Concentrations vary lot to lot. See vial label for concentration. If unlisted please contact technical services.
Storage	Store at 4C short term. Aliquot and store at -20C long term. Avoid freeze-thaw cycles.
Clonality	Polyclonal
Preservative	0.02% Sodium Azide
Isotype	IgG
Purity	Affinity purified
Buffer	PBS (pH 7.2) and 40% Glycerol

Product Description

Host	Rabbit
Gene ID	9975
Gene Symbol	NR1D2
Species	Human
Reactivity Notes	Mouse 85%.
Immunogen	This antibody was developed against a recombinant protein corresponding to the following amino acid sequence: SHFPCSESQQHLNGQFKGRNIMHYPNGHAICIANGHCMNFSNAYTQRVCDRV PIDGFSQENKNSYLCNTGGRMHLVCPLSKSP

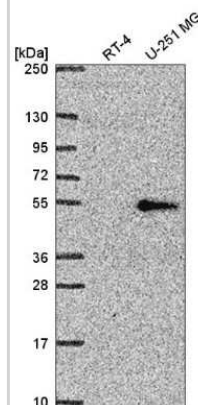
Product Application Details

Applications	Western Blot, Immunocytochemistry/ Immunofluorescence
Recommended Dilutions	Western Blot 0.04-0.4 ug/ml, Immunocytochemistry/ Immunofluorescence 0.25-2 ug/ml
Application Notes	ICC/IF Fixation Permeabilization: Use PFA/Triton X-100.

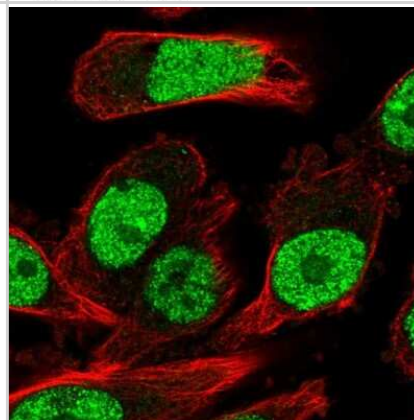


Images

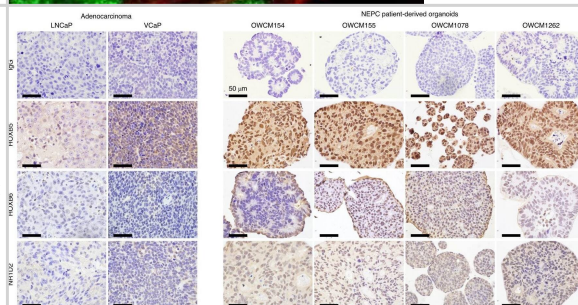
Western Blot: Rev-erb beta/NR1D2 Antibody [NBP2-56141] - Analysis in human cell line RT-4 and human cell line U-251 MG.



Immunocytochemistry/Immunofluorescence: Rev-erb beta/NR1D2 Antibody [NBP2-56141] - Staining of human cell line PC-3 shows localization to nucleoplasm.



Immunohistochemistry: Rev-erb beta/NR1D2 Antibody [NBP2-56141] - Cancer cells from small cell carcinoma employ highly divergent regulatory program compared to adenocarcinoma cells. a, b, Gene set expression scores of single G1 cells using expression signature of NEPC18 (a) & set of genes regulated by AR17 (b). Box plots: center line, median; box limits, upper & lower quartiles; whiskers extend at most 1.5 \times interquartile range past upper & lower quartiles; P values from 2-sided Mann–Whitney U-test. c, Inferred activity of regulons of different transcriptional regulators. x axis, q values from comparison of inferred regulon activity in cancer cells from small cell carcinoma (n = 76) vs cancer cells from adenocarcinomas (n = 188, sampled as described in Methods) (negative values indicate regulon is less active in small cell carcinoma; two-sided Mann–Whitney U-test, median outcome of sampling iterations (Methods) w/ Bonferroni FWER correction). y axis: P values (two-sided Mann–Whitney U-test, signed as previous) from comparison of expression scores of scRNA-derived regulons in bulk RNA-seq of small cell carcinomas (n = 8) vs adenocarcinomas (n = 18) from a published cohort⁸. d, Regulon activity in single cells for select transcriptional regulators. e, Hierarchical clustering of bulk RNA-seq of a published cohort of prostate cancers of known histopathology¹⁸ based on expression of HOXB5, HOXB6 & NR1D2 regulons inferred from scRNA-seq. B–E correspond to different NEPC subtype labels from original publication. Expression levels of EZH2, NANOG & SOX2 shown for reference but not used in clustering (n = 34 adenocarcinoma, 15 NEPC). f, IHC staining of HOXB5, HOXB6 & NR1D2 protein levels in two prostate adenocarcinoma xenografts (LNCaP & VCaP) & four NEPC patient-derived organoids. Scale bar: 50 μ m. Image collected & cropped by CiteAb from following publication (<https://pubmed.ncbi.nlm.nih.gov/33664492>), licensed under a CC-BY license. Not internally tested by Novus Biologicals.



Publications

He, M X, Cuoco, M S Et al. Transcriptional mediators of treatment resistance in lethal prostate cancer. Nat Med 2021-03-01 [PMID: 33664492] (WB, Human)





Novus Biologicals USA

10730 E. Briarwood Avenue
Centennial, CO 80112
USA
Phone: 303.730.1950
Toll Free: 1.888.506.6887
Fax: 303.730.1966
nb-customerservice@bio-techne.com

Bio-Techne Canada

21 Canmotor Ave
Toronto, ON M8Z 4E6
Canada
Phone: 905.827.6400
Toll Free: 855.668.8722
Fax: 905.827.6402
canada.inquires@bio-techne.com

Bio-Techne Ltd

19 Barton Lane
Abingdon Science Park
Abingdon, OX14 3NB, United Kingdom
Phone: (44) (0) 1235 529449
Free Phone: 0800 37 34 15
Fax: (44) (0) 1235 533420
info.EMEA@bio-techne.com

General Contact Information

www.novusbio.com
Technical Support: nb-technical@bio-techne.com
Orders: nb-customerservice@bio-techne.com
General: novus@novusbio.com

Products Related to NBP2-56141

NBP2-56141PEP	Rev-erb beta/NR1D2 Recombinant Protein Antigen
HAF008	Goat anti-Rabbit IgG Secondary Antibody [HRP]
NB7160	Goat anti-Rabbit IgG (H+L) Secondary Antibody [HRP]
NBP2-24891	Rabbit IgG Isotype Control

Limitations

This product is for research use only and is not approved for use in humans or in clinical diagnosis. Primary Antibodies are guaranteed for 1 year from date of receipt.

For more information on our 100% guarantee, please visit www.novusbio.com/guarantee

Earn gift cards/discounts by submitting a review: www.novusbio.com/reviews/submit/NBP2-56141

Earn gift cards/discounts by submitting a publication using this product:
www.novusbio.com/publications

