

Product Datasheet

Ki67/MKI67 Antibody (1297A) - BSA Free NBP2-54791

Unit Size: 0.1 mg

Store at 4C short term. Aliquot and store at -20C long term. Avoid freeze-thaw cycles.

www.novusbio.com



technical@novusbio.com

Publications: 4

Protocols, Publications, Related Products, Reviews, Research Tools and Images at:
www.novusbio.com/NBP2-54791

Updated 10/23/2024 v.20.1

Earn rewards for product
reviews and publications.

Submit a publication at www.novusbio.com/publications

Submit a review at www.novusbio.com/reviews/destination/NBP2-54791



NBP2-54791

Ki67/MKI67 Antibody (1297A) - BSA Free

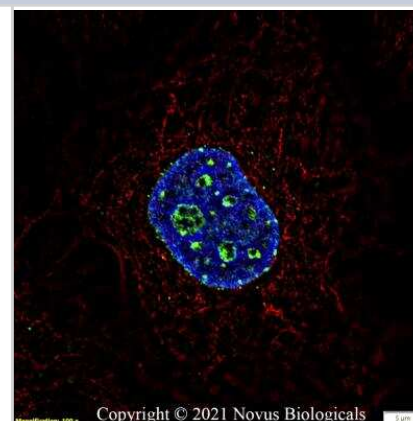
Product Information	
Unit Size	0.1 mg
Concentration	1.0 mg/ml
Storage	Store at 4C short term. Aliquot and store at -20C long term. Avoid freeze-thaw cycles.
Clonality	Monoclonal
Clone	1297A
Preservative	0.02% Sodium Azide
Isotype	IgG
Purity	Protein A or G purified
Buffer	PBS
Target Molecular Weight	351 kDa

Product Description	
Host	Rabbit
Gene ID	4288
Gene Symbol	MKI67
Species	Human, Mouse
Reactivity Notes	Use in Mouse reported in scientific literature (PMID:33536573).
Immunogen	The immunogen for this KI67/MKI67 Antibody (1297A) was made using a synthetic peptide from the internal portion of Mouse KI67/MKI67, between amino acids 1850-1950 [UniProt# E9PVX6].

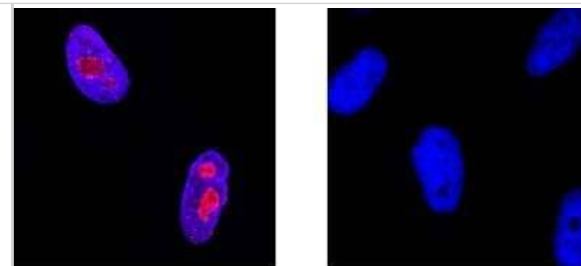
Product Application Details	
Applications	Flow Cytometry, Flow (Intracellular), Immunocytochemistry/Immunofluorescence, Immunohistochemistry, Immunohistochemistry-Paraffin, Knockout Validated
Recommended Dilutions	Flow Cytometry 1 ug/mL, Immunohistochemistry 3-15 ug/mL, Immunocytochemistry/ Immunofluorescence 1-10 ug/mL, Immunohistochemistry-Paraffin 3-15 ug/mL, Flow (Intracellular) 1 ug/mL, Knockout Validated

Images

Immunocytochemistry/Immunofluorescence: Ki67/MKI67 Antibody (1297A) [NBP2-54791] - A431 cells were fixed in 4% paraformaldehyde for 10 minutes and permeabilized in 0.5% Triton X-100 in PBS for 5 minutes. The cells were incubated with anti-Ki67/MKI67 Antibody (1297A) NBP2-54791 at 2 ug/ml overnight at 4C and detected with an anti-rabbit Dylight 488 (Green) at a 1:1000 dilution for 60 minutes. Alpha tubulin (DM1A) NB100-690 was used as a co-stain at a 1:1000 dilution and detected with an anti-mouse Dylight 550 (Red) at a 1:1000 dilution. Nuclei were counterstained with DAPI (Blue). Cells were imaged using a 100X objective and digitally deconvolved.



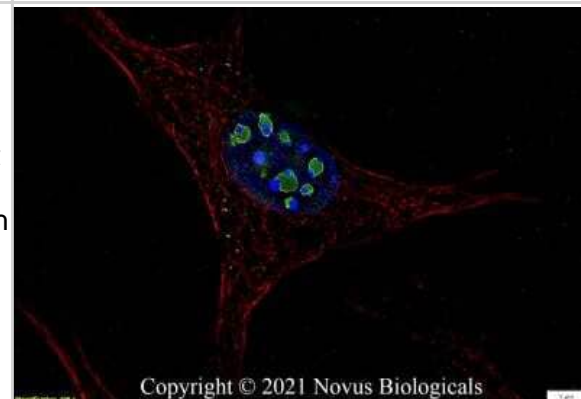
Knockout Validated: Ki67/MKI67 Antibody (1297A) [NBP2-54791] - Ki67/MKI67 was detected in immersion fixed HeLa human cervical epithelial carcinoma cell line but is not detected in Ki67/MKI67 knockout (KO) HeLa cell line using Rabbit Anti-Human Ki67/MKI67 Monoclonal Antibody (Catalog # NBP2-54791) at 1 ug/mL for 3 hours at room temperature. Cells were stained using the NorthernLights(TM) 557-conjugated Anti-Rabbit IgG Secondary Antibody (red; Catalog # NL004) and counterstained with DAPI (blue). Specific staining was localized to nuclei.



Wild Type

Knockout

Immunocytochemistry/Immunofluorescence: Ki67/MKI67 Antibody (1297A) [NBP2-54791] - NIH3T3 cells were fixed in 4% paraformaldehyde for 10 minutes and permeabilized in 0.5% Triton X-100 in PBS for 5 minutes. The cells were incubated with anti- NBP2-54791 at 2 ug/ml overnight at 4C and detected with an anti-rabbit Dylight 488 (Green) at a 1:1000 dilution for 60 minutes. Alpha tubulin (DM1A) NB100-690 was used as a co-stain at a 1:1000 dilution and detected with an anti-mouse Dylight 550 (Red) at a 1:1000 dilution. Nuclei were counterstained with DAPI (Blue). Cells were imaged using a 100X objective and digitally deconvolved.



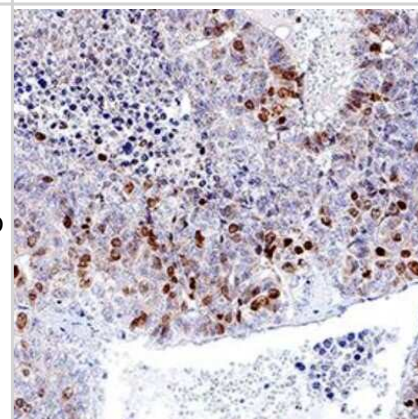
Copyright © 2021 Novus Biologicals

Immunocytochemistry/Immunofluorescence: Ki67/MKI67 Antibody (1297A) [NBP2-54791] - HeLa cells were fixed in 4% paraformaldehyde for 10 minutes and permeabilized in 0.5% Triton X-100 in PBS for 5 minutes. The cells were incubated with Ki67/MKI67 Antibody [1297A] conjugated to Alexa Fluor 647 (NBP2-54791AF647) at 2 ug/ml for 1 hour at room temperature. Nuclei were counterstained with DAPI (Blue). Cells were imaged using a 40X objective.

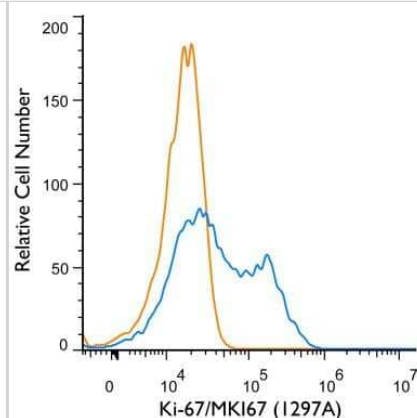


Copyright © 2022 Novus Biologicals

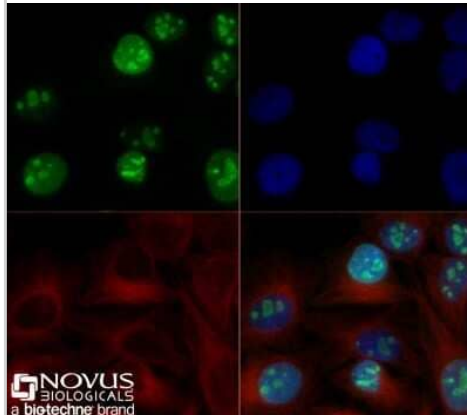
Immunohistochemistry-Paraffin: Ki67/MKI67 Antibody (1297A) [NBP2-54791] - Ki-67/MKI67 was detected in immersion fixed paraffin-embedded sections of human liver cancer tissue using Rabbit Anti-Human Ki-67/MKI67 Monoclonal Antibody at 3 µg/mL for 1 hour at room temperature followed by incubation with the Anti-Rabbit IgG VisUCyte™ HRP Polymer Antibody. Tissue was stained using DAB (brown) and counterstained with hematoxylin (blue). Specific staining was localized to nuclei. Staining with VisUCyte HRP Polymer Detection Reagents.



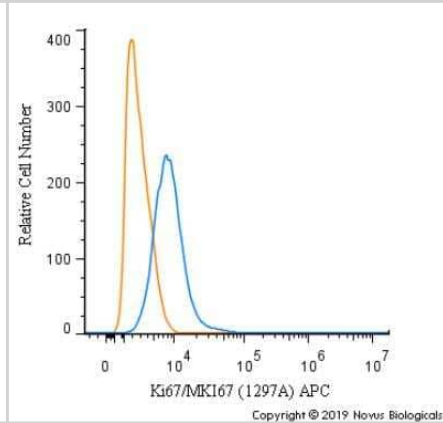
Flow (Intracellular): Ki67/MKI67 Antibody (1297A) [NBP2-54791] - Ki-67/MKI67 Antibody (1297A) [NBP2-54791] - An intracellular stain was performed on Jurkat Cells with Ki-67/MKI67 (1297A) antibody NBP2-54791 (blue) and a matched isotype control MAB1050 (orange). Cells were fixed with 4% paraformaldehyde, following fixation, cells were permeabilized with 0.1% saponin. Cells were incubated in an antibody dilution of 1 ug/mL for 30 minutes at room temperature, followed by rabbit IgG APC-conjugated secondary antibody (F01111, R&D Systems).



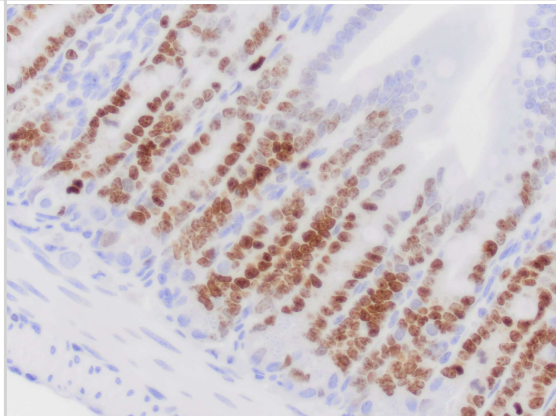
Immunocytochemistry/Immunofluorescence: Ki67/MKI67 Antibody (1297A) [NBP2-54791] - HeLa cells were fixed for 10 minutes using 10% formalin and then permeabilized for 5 minutes using 1X TBS + 0.5% Triton X-100. The cells were incubated with anti-Ki67/MKI67 (1297A) at 2.0 ug/mL overnight at 4C and detected with an anti-rabbit Dylight 488 (Green) at a 1:500 dilution. Alpha tubulin (DM1A) NB100-690 was used as a co-stain at a 1:1000 dilution and detected with an anti-mouse Dylight 550 (Red) at a 1:500 dilution. Nuclei were counterstained with DAPI (Blue). Cells were imaged using a 40X objective.



Flow Cytometry: Ki67/MKI67 Antibody (1297A) [NBP2-54791] - An intracellular stain was performed on HeLa cells with Ki67/MKI67 Antibody [1297A] NBP2-54791 APC (blue) and a matched isotype control (orange). Cells were fixed with 4% PFA and then permeabilized with 0.1% saponin. Cells were incubated in an antibody dilution of 2.5 ug/mL for 30 minutes at room temperature. Both antibodies were conjugated to Allophycocyanin.



Immunohistochemistry-Paraffin: Ki67/MKI67 Antibody (1297A) [NBP2-54791] - Ki67/MKI67 immunoreactivity in mouse small intestine. NBP2-54791 was diluted to 0.5ug/mL in Antibody Diluent and was left on sections for 1h at room temperature. Secondary was Horse Anti-Rabbit HRP. Image from verified customer review.

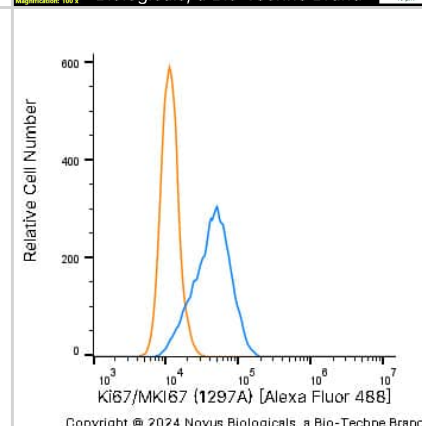


Ki67/MKI67 (1297A) was detected in immersion fixed A431 human skin carcinoma cell line using Rabbit anti-Ki67/MKI67 (1297A) Protein G Purified Recombinant Monoclonal Antibody conjugated to Alexa Fluor® 488 (Catalog # NBP2-54791AF488) (green) at 2 µg/mL overnight at 4C. Cells were counterstained with DAPI (blue). Cells were imaged using a 100X objective and digitally deconvolved.



Copyright © 2024 Novus Biologicals, a Bio-Techne Brand

An intracellular stain was performed on U-2 OS human osteosarcoma cell line with Rabbit anti-Ki67/MKI67 (1297A) Protein-G purified Monoclonal Antibody conjugated to Alexa Fluor® 488 (Catalog # NBP2-54791AF488, blue histogram) or matched control antibody (Catalog # NBP2-24982, orange histogram).



Copyright © 2024 Novus Biologicals, a Bio-Techne Brand

Publications

Hassanzadeh Makoui M, Mobini M, Khoshnoodi J et al. Novel Monoclonal Antibodies Specific for Human Ki67 and P53 Tumor Markers in Breast Cancer Tissue Samples Iranian journal of immunology : IJI 2023-05-31 [PMID: 37149778] (FLOW)

Hou X, Dai H, Zheng y Circular RNA hsa_circ_0008896 accelerates atherosclerosis by promoting the proliferation, migration and invasion of vascular smooth muscle cells via hsa-miR-633/CDC20B (cell division cycle 20B) axis Bioengineered 2022-03-01 [PMID: 35212610] (WB, Human)

Aung TN, Acs B, Warrell J et al. A new tool for technical standardization of the Ki67 immunohistochemical assay Modern pathology : an official journal of the United States and Canadian Academy of Pathology, Inc 2021-02-03 [PMID: 33536573] (IF/IHC, Mouse)

Ly C, Ferrier J, Gaudet J, Yockell-Lelievre J. Vaccinium angustifolium (lowbush blueberry) leaf extract increases extravillous trophoblast cell migration and invasion in vitro. Phytother Res. 2018-01-29 [PMID: 29377302] (IF/IHC, Human)



Novus Biologicals USA

10730 E. Briarwood Avenue
Centennial, CO 80112
USA
Phone: 303.730.1950
Toll Free: 1.888.506.6887
Fax: 303.730.1966
nb-customerservice@bio-techne.com

Bio-Techne Canada

21 Canmotor Ave
Toronto, ON M8Z 4E6
Canada
Phone: 905.827.6400
Toll Free: 855.668.8722
Fax: 905.827.6402
canada.inquires@bio-techne.com

Bio-Techne Ltd

19 Barton Lane
Abingdon Science Park
Abingdon, OX14 3NB, United Kingdom
Phone: (44) (0) 1235 529449
Free Phone: 0800 37 34 15
Fax: (44) (0) 1235 533420
info.EMEA@bio-techne.com

General Contact Information

www.novusbio.com
Technical Support: nb-technical@bio-techne.com
Orders: nb-customerservice@bio-techne.com
General: novus@novusbio.com

Products Related to NBP2-54791

HAF008	Goat anti-Rabbit IgG Secondary Antibody [HRP]
NB7160	Goat anti-Rabbit IgG (H+L) Secondary Antibody [HRP]
NBP2-24891	Rabbit IgG Isotype Control
NB110-90592PEP	Ki67/MKI67 Antibody Blocking Peptide

Limitations

This product is for research use only and is not approved for use in humans or in clinical diagnosis. Primary Antibodies are guaranteed for 1 year from date of receipt.

For more information on our 100% guarantee, please visit www.novusbio.com/guarantee

Earn gift cards/discounts by submitting a review: www.novusbio.com/reviews/submit/NBP2-54791

Earn gift cards/discounts by submitting a publication using this product:
www.novusbio.com/publications

