

Product Datasheet

LIM Kinase 1/2 [p Thr508] Antibody - BSA Free NBP2-54645-0.05mg

Unit Size: 0.05 mg

Store at -20 degrees C. Avoid freeze/thaw cycles.

www.novusbio.com



technical@novusbio.com

Protocols, Publications, Related Products, Reviews, Research Tools and Images at:
www.novusbio.com/NBP2-54645

Updated 10/23/2024 v.20.1

Earn rewards for product
reviews and publications.

Submit a publication at www.novusbio.com/publications

Submit a review at www.novusbio.com/reviews/destination/NBP2-54645



NBP2-54645-0.05mg

LIM Kinase 1/2 [p Thr508] Antibody - BSA Free

Product Information	
Unit Size	0.05 mg
Concentration	1 mg/ml
Storage	Store at -20 degrees C. Avoid freeze/thaw cycles.
Clonality	Polyclonal
Preservative	0.02% Sodium Azide
Isotype	IgG
Purity	Epitope affinity purified
Buffer	Antibody supplied in phosphate buffered saline (without Mg ²⁺ and Ca ²⁺), pH 7.4, 150mM NaCl, and 50% glycerol.
Target Molecular Weight	72 kDa

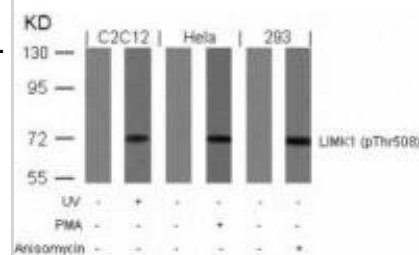
Product Description	
Host	Rabbit
Gene ID	3984
Gene Symbol	LIMK1
Species	Human, Mouse, Rat
Specificity/Sensitivity	This antibody detects endogenous level of LIM Kinase 1/2 only when phosphorylated at threonine 508.
Immunogen	A peptide sequence around phosphorylation site of threonine 508 (R-Y-T (p) -V-V) derived from Human LIMK1

Product Application Details	
Applications	Western Blot, Immunocytochemistry/ Immunofluorescence, Immunohistochemistry, Immunohistochemistry-Paraffin
Recommended Dilutions	Western Blot 1:500-1:1000, Immunohistochemistry 1:50-1:100, Immunocytochemistry/ Immunofluorescence 1:100-1:200, Immunohistochemistry-Paraffin 1:10-1:500

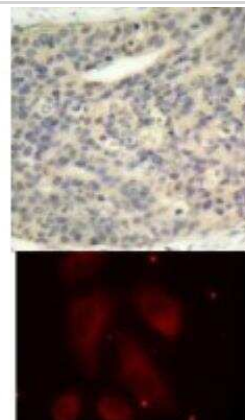


Images

Western Blot: LIM Kinase 1/2 [p Thr508] Antibody [NBP2-54645] - [p Thr505, p Thr508] Antibody [NBP2-54645] - Western blot analysis of lysed extracts from UV-treated C2C12, PMA-treated HeLa and anisomycin-treated 293 cells using LIMK1 [p Thr505, p Thr508] antibody.



Immunohistochemistry-Paraffin: LIM Kinase 1/2 [p Thr505, p Thr508] Antibody [NBP2-54645] - Top Image: Immunohistochemical analysis of paraffin-embedded human breast carcinoma tissue using LIMK1 (Phospho-Thr508). Bottom Image: Immunofluorescence staining of methanol-fixed HeLa cells using LIMK1 (Phospho-Thr508).





Novus Biologicals USA

10730 E. Briarwood Avenue
Centennial, CO 80112
USA
Phone: 303.730.1950
Toll Free: 1.888.506.6887
Fax: 303.730.1966
nb-customerservice@bio-techne.com

Bio-Techne Canada

21 Canmotor Ave
Toronto, ON M8Z 4E6
Canada
Phone: 905.827.6400
Toll Free: 855.668.8722
Fax: 905.827.6402
canada.inquires@bio-techne.com

Bio-Techne Ltd

19 Barton Lane
Abingdon Science Park
Abingdon, OX14 3NB, United Kingdom
Phone: (44) (0) 1235 529449
Free Phone: 0800 37 34 15
Fax: (44) (0) 1235 533420
info.EMEA@bio-techne.com

General Contact Information

www.novusbio.com
Technical Support: nb-technical@bio-techne.com
Orders: nb-customerservice@bio-techne.com
General: novus@novusbio.com

Products Related to NBP2-54645-0.05mg

HAF008	Goat anti-Rabbit IgG Secondary Antibody [HRP]
NB7160	Goat anti-Rabbit IgG (H+L) Secondary Antibody [HRP]
NBP2-24891	Rabbit IgG Isotype Control
236-EG-200	EGF [Unconjugated]

Limitations

This product is for research use only and is not approved for use in humans or in clinical diagnosis. Primary Antibodies are guaranteed for 1 year from date of receipt.

For more information on our 100% guarantee, please visit www.novusbio.com/guarantee

Earn gift cards/discounts by submitting a review: www.novusbio.com/reviews/submit/NBP2-54645

Earn gift cards/discounts by submitting a publication using this product:
www.novusbio.com/publications

