

Product Datasheet

Enolase 2/Neuron-specific Enolase Antibody (SPM347) [mFluor Violet 500 SE] NBP2-54590MFV500

Unit Size: 0.1 ml

Store at 4C in the dark.

www.novusbio.com



technical@novusbio.com

Protocols, Publications, Related Products, Reviews, Research Tools and Images at:
www.novusbio.com/NBP2-54590MFV500

Updated 10/26/2023 v.20.1

Earn rewards for product
reviews and publications.

Submit a publication at www.novusbio.com/publications

Submit a review at www.novusbio.com/reviews/destination/NBP2-54590MFV500



NBP2-54590MFV500

Enolase 2/Neuron-specific Enolase Antibody (SPM347) [mFluor Violet 500 SE]

Product Information

Unit Size	0.1 ml
Concentration	Please see the vial label for concentration. If unlisted please contact technical services.
Storage	Store at 4C in the dark.
Clonality	Monoclonal
Clone	SPM347
Preservative	0.05% Sodium Azide
Isotype	IgG2b Kappa
Conjugate	mFluor Violet 500 SE
Purity	Protein A or G purified
Buffer	50mM Sodium Borate

Product Description

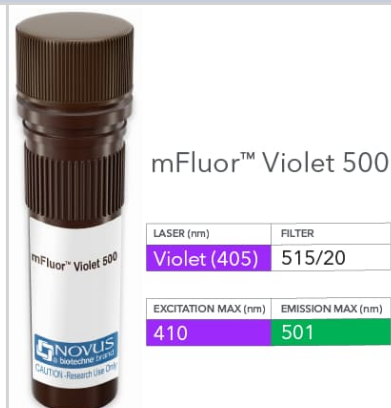
Host	Mouse
Gene ID	2026
Gene Symbol	ENO2
Species	Human
Marker	Neuroendocrine Marker
Immunogen	A synthetic peptide of human Enolase 2/Neuron-specific Enolase (around aa416-433; exact sequence is proprietary) (Uniprot: P09104)
Notes	mFluor(TM) is a trademark of AAT Bioquest, Inc. This conjugate is made on demand. Actual recovery may vary from the stated volume of this product. The volume will be greater than or equal to the unit size stated on the datasheet.

Product Application Details

Applications	Western Blot, Flow Cytometry, Immunocytochemistry/Immunofluorescence, Immunohistochemistry, Immunohistochemistry-Paraffin, CyTOF-ready
Recommended Dilutions	Western Blot, Flow Cytometry, Immunohistochemistry, Immunocytochemistry/Immunofluorescence, Immunohistochemistry-Paraffin, CyTOF-ready
Application Notes	Optimal dilution of this antibody should be experimentally determined.

Images

Enolase 2/Neuron-specific Enolase Antibody (SPM347) [mFluor Violet 500 SE] - Vial of mFluor Violet 500 conjugated antibody. mFluor Violet 500 is optimally excited at 410 nm by the Violet laser (405 nm) and has an emission maximum of 501 nm.





Novus Biologicals USA

10730 E. Briarwood Avenue
Centennial, CO 80112
USA

Phone: 303.730.1950
Toll Free: 1.888.506.6887
Fax: 303.730.1966
novus@novusbio.com

Bio-Techne Canada

21 Canmotor Ave
Toronto, ON M8Z 4E6
Canada

Phone: 905.827.6400
Toll Free: 855.668.8722
Fax: 905.827.6402
canada.inquires@bio-techne.com

Bio-Techne Ltd

19 Barton Lane
Abingdon Science Park
Abingdon, OX14 3NB, United Kingdom

Phone: (44) (0) 1235 529449
Free Phone: 0800 37 34 15
Fax: (44) (0) 1235 533420
info.EMEA@bio-techne.com

General Contact Information

www.novusbio.com
Technical Support: technical@novusbio.com
Orders: orders@novusbio.com
General: novus@novusbio.com

Products Related to NBP2-54590MFV500

NBP2-61382-1mg	Recombinant Human Enolase 2/Neuron-specific Enolase Protein
7954-GM-010/CF	GM-CSF [Unconjugated]
DENL20	Enolase 2/Neuron-specific Enolase [HRP]
NB300-141	GFAP Antibody

Limitations

This product is for research use only and is not approved for use in humans or in clinical diagnosis. Primary Antibodies are guaranteed for 1 year from date of receipt.

For more information on our 100% guarantee, please visit www.novusbio.com/guarantee

Earn gift cards/discounts by submitting a review: www.novusbio.com/reviews/submit/NBP2-54590MFV500

Earn gift cards/discounts by submitting a publication using this product:
www.novusbio.com/publications

