

# Product Datasheet

## TOP2A Antibody (TOP2A/1361) - Azide and BSA Free NBP2-54546-100ug

Unit Size: 100 ug

Store at -20 to -80C. Avoid freeze-thaw cycles.

[www.novusbio.com](http://www.novusbio.com)



[technical@novusbio.com](mailto:technical@novusbio.com)

Protocols, Publications, Related Products, Reviews, Research Tools and Images at:  
[www.novusbio.com/NBP2-54546](http://www.novusbio.com/NBP2-54546)

Updated 10/23/2024 v.20.1

Earn rewards for product  
reviews and publications.

Submit a publication at [www.novusbio.com/publications](http://www.novusbio.com/publications)

Submit a review at [www.novusbio.com/reviews/destination/NBP2-54546](http://www.novusbio.com/reviews/destination/NBP2-54546)



**NBP2-54546-100ug**

TOP2A Antibody (TOP2A/1361) - Azide and BSA Free

Product Information	
Unit Size	100 ug
Concentration	1 mg/ml
Storage	Store at -20 to -80C. Avoid freeze-thaw cycles.
Clonality	Monoclonal
Clone	TOP2A/1361
Preservative	No Preservative
Isotype	IgG2b Kappa
Purity	Protein A or G purified
Buffer	10 mM PBS
Target Molecular Weight	170 kDa

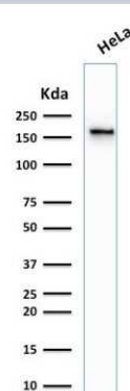
Product Description	
Description	1.0 mg/ml of antibody purified from Bioreactor Concentrate by Protein A/G. Prepared in 10mM PBS WITHOUT BSA & azide. Also available at 200 ug/ml WITH BSA & azide (NBP2-53281).  Antibody with azide - store at 2 to 8C. Antibody without azide - store at -20 to -80C.
Host	Mouse
Gene ID	7153
Gene Symbol	TOP2A
Species	Human, Mouse
Marker	Proliferation & Drug-Resistance Marker
Immunogen	Recombinant human TOP2A fragment (aa1352-1493) (Uniprot: P11388)

Product Application Details	
Applications	Western Blot, Immunocytochemistry/ Immunofluorescence, Immunohistochemistry, Immunohistochemistry-Paraffin, Protein Array, CyTOF-ready
Recommended Dilutions	Western Blot 0.5 - 1 ug/ml, Immunohistochemistry, Immunocytochemistry/ Immunofluorescence 1 - 2 ug/ml, Immunohistochemistry-Paraffin 0.5 - 1.0 ug/ml, Protein Array, CyTOF-ready
Application Notes	Immunohistochemistry (Formalin-fixed): 1-2ug/ml for 30 min at RT. Staining of formalin-fixed tissues requires heating tissue sections in 10mM Tris with 1mM EDTA, pH 9.0, for 45 min at 95C followed by cooling at RT for 20 minutes. Optimal dilution for a specific application should be determined.

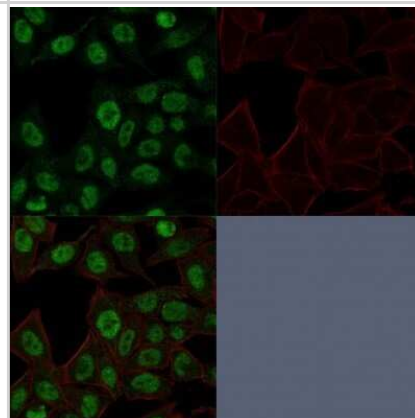


## Images

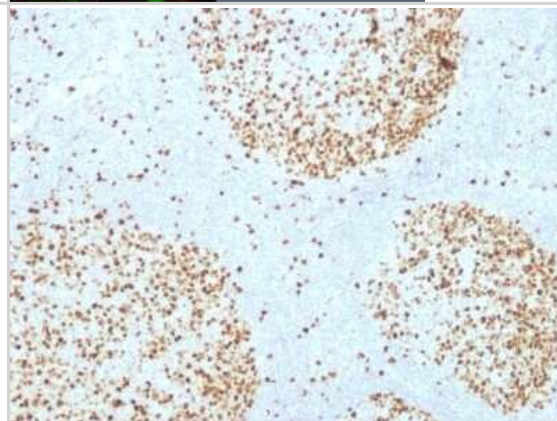
Western Blot: TOP2A Antibody (TOP2A/1361) - Azide and BSA Free [NBP2-54546] - Western Blot Analysis of human HeLa cell lysate using TOP2A Antibody (TOP2A/1361).



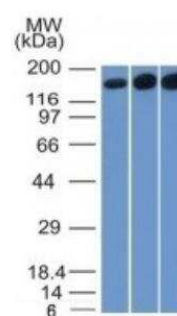
Immunocytochemistry/Immunofluorescence: TOP2A Antibody (TOP2A/1361) - Azide and BSA Free [NBP2-54546] - Confocal Immunofluorescence image of HeLa cells using TOP2A Antibody (TOP2A/1361) Green (CF488) and Phalloidin (Red) is used to label the nuclei.



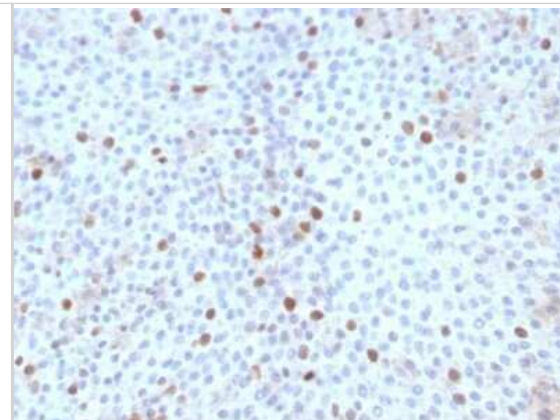
Immunohistochemistry-Paraffin: TOP2A Antibody (TOP2A/1361) - Azide and BSA Free [NBP2-54546] - Formalin-fixed, paraffin-embedded Human Tonsil stained with Topoisomerase II alpha Monoclonal Antibody (TOP2A/1361).



Western Blot: TOP2A Antibody (TOP2A/1361) - Azide and BSA Free [NBP2-54546] - TOP2A Antibody (TOP2A/1361) [NBP2-54546] - HepG2, HeLa and 3T3 Cell Lysate using Topo II alpha, Monoclonal Antibody (TOP2A/1361).



Immunohistochemistry-Paraffin: TOP2A Antibody (TOP2A/1361) - Azide and BSA Free [NBP2-54546] - Formalin-fixed, paraffin-embedded Human Bladder Carcinoma stained with Topoisomerase II alpha Monoclonal Antibody (TOP2A/1361).



Protein Array: TOP2A Antibody (TOP2A/1361) - Azide and BSA Free [NBP2-54546] - Analysis of Protein Array containing more than 19,000 full-length human proteins using TOP2A Antibody (TOP2A/1361). Z- and S- Score: The Z-score represents the strength of a signal that a monoclonal antibody (MAb) (in combination with a fluorescently-tagged anti-IgG secondary antibody) produces when binding to a particular protein on the HuProt(TM) array. Z-scores are described in units of standard deviations (SDs) above the mean value of all signals generated on that array. If targets on HuProt(TM) are arranged in descending order of the Z-score, the S-score is the difference (also in units of SDs) between the Z-score. S-score therefore represents the relative target specificity of a MAb to its intended target. A MAb is considered to specific to its intended target, if the MAb has an S-score of at least 2.5.





### **Novus Biologicals USA**

10730 E. Briarwood Avenue  
Centennial, CO 80112  
USA  
Phone: 303.730.1950  
Toll Free: 1.888.506.6887  
Fax: 303.730.1966  
nb-customerservice@bio-techne.com

### **Bio-Techne Canada**

21 Canmotor Ave  
Toronto, ON M8Z 4E6  
Canada  
Phone: 905.827.6400  
Toll Free: 855.668.8722  
Fax: 905.827.6402  
canada.inquires@bio-techne.com

### **Bio-Techne Ltd**

19 Barton Lane  
Abingdon Science Park  
Abingdon, OX14 3NB, United Kingdom  
Phone: (44) (0) 1235 529449  
Free Phone: 0800 37 34 15  
Fax: (44) (0) 1235 533420  
info.EMEA@bio-techne.com

### **General Contact Information**

[www.novusbio.com](http://www.novusbio.com)  
Technical Support: nb-technical@bio-techne.com  
Orders: nb-customerservice@bio-techne.com  
General: novus@novusbio.com

### **Products Related to NBP2-54546-100ug**

HAF007	Goat anti-Mouse IgG Secondary Antibody [HRP]
NB720-B	Rabbit anti-Mouse IgG (H+L) Secondary Antibody [Biotin]
NBP1-43317-0.5mg	Mouse IgG2b Kappa Light Chain Isotype Control (MG2b)
H00007153-Q01-10ug	Recombinant Human TOP2A GST (N-Term) Protein

### **Limitations**

This product is for research use only and is not approved for use in humans or in clinical diagnosis. Primary Antibodies are guaranteed for 1 year from date of receipt.

For more information on our 100% guarantee, please visit [www.novusbio.com/guarantee](http://www.novusbio.com/guarantee)

Earn gift cards/discounts by submitting a review: [www.novusbio.com/reviews/submit/NBP2-54546](http://www.novusbio.com/reviews/submit/NBP2-54546)

Earn gift cards/discounts by submitting a publication using this product:  
[www.novusbio.com/publications](http://www.novusbio.com/publications)

