

Product Datasheet

HLA DQ/DR/DP Antibody (CR3/43) - Azide and BSA Free NBP2-54507-100ug

Unit Size: 100 ug

Store at -20 to -80C. Avoid freeze-thaw cycles.

www.novusbio.com



technical@novusbio.com

Protocols, Publications, Related Products, Reviews, Research Tools and Images at:
www.novusbio.com/NBP2-54507

Updated 10/23/2024 v.20.1

Earn rewards for product
reviews and publications.

Submit a publication at www.novusbio.com/publications

Submit a review at www.novusbio.com/reviews/destination/NBP2-54507



NBP2-54507-100ug

HLA DQ/DR/DP Antibody (CR3/43) - Azide and BSA Free

Product Information	
Unit Size	100 ug
Concentration	1 mg/ml
Storage	Store at -20 to -80C. Avoid freeze-thaw cycles.
Clonality	Monoclonal
Clone	CR3/43
Preservative	No Preservative
Isotype	IgG1 Kappa
Purity	Protein A or G purified
Buffer	10 mM PBS

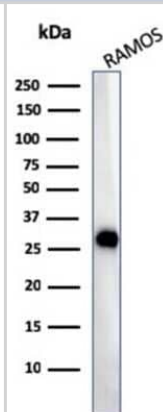
Product Description	
Description	<p>1.0 mg/ml of antibody purified from Bioreactor Concentrate by Protein A/G. Prepared in 10mM PBS WITHOUT BSA & azide. Also available at 200 ug/ml WITH BSA & azide (NBP2-53380).</p> <p>Antibody with azide - store at 2 to 8C. Antibody without azide - store at -20 to -80C.</p>
Host	Mouse
Gene ID	3117
Gene Symbol	HLA-DQA1
Species	Human
Specificity/Sensitivity	<p>Reacts with a common epitope of human major histocompatibility (MHC) class II antigens, HLA-DP, -DQ and -DR. Human MHC class II antigens are transmembrane glycoproteins composed of an chain (36kDa) and a chain (27kDa). They are expressed primarily on antigen presenting cells such as B lymphocytes, monocytes, macrophages, and thymic epithelial cells and are also present on activated T lymphocytes. Human MHC class II genes are located in the HLA-D region that encodes at least six and ten chain genes. Three loci, DR, DQ and DP, encode the major expressed products of the human class II region. The human MHC class II molecules bind intracellularly processed peptides and present them to T-helper cells. They, therefore, have a critical role in the initiation of the immune response. It has been shown that some autoimmune diseases are associated with certain class II alleles.</p>
Immunogen	Cells from human tonsil

Product Application Details	
Applications	Western Blot, ELISA, Flow Cytometry, Immunocytochemistry/ Immunofluorescence, Immunohistochemistry, Immunohistochemistry-Paraffin
Recommended Dilutions	Western Blot, Flow Cytometry, ELISA 2-4 ug/ml, Immunohistochemistry, Immunocytochemistry/ Immunofluorescence 0.5 - 1 ug/ml, Immunohistochemistry-Paraffin 1 - 2 ug/ml
Application Notes	<p>ELISA: For coating use Ab at 2-4ug/ml, order Ab without BSA.</p> <p>Immunohistochemistry (Formalin-fixed): 1-2ug/ml for 30 minutes at RT. Staining of formalin-fixed tissues requires heating tissue sections in 10mM Tris with 1mM EDTA, pH 9.0, for 45 min at 95C followed by cooling at RT for 20 minutes. Optimal dilution for a specific application should be determined.</p>

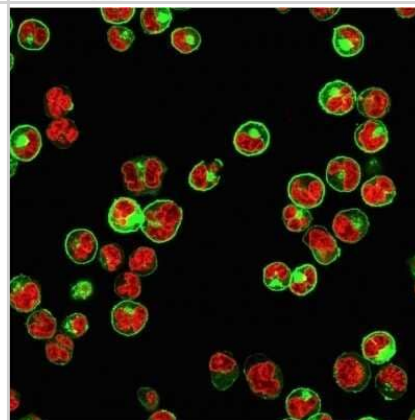


Images

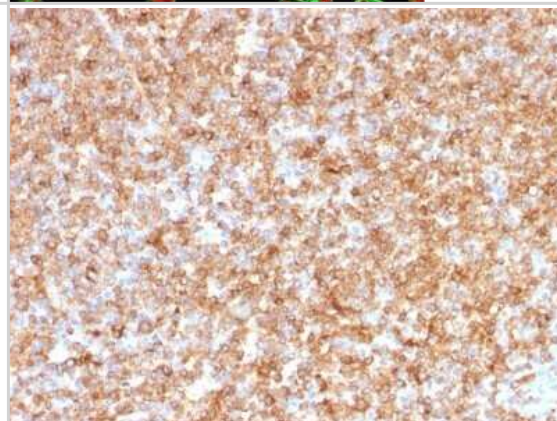
Western Blot: HLA DQ/DR/DP Antibody (CR3/43) - Azide and BSA Free [NBP2-54507] - Western Blot Analysis of Ramos cell lysate using HLA DQ/DR/DP antibody (CR3/43).



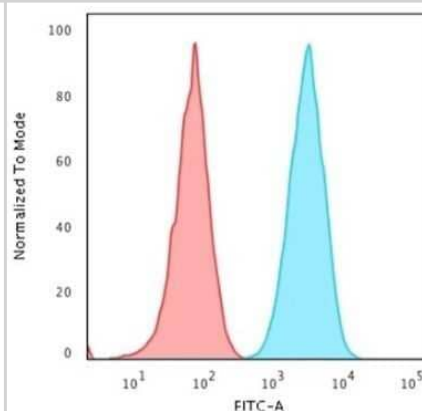
Immunocytochemistry/Immunofluorescence: HLA DQ/DR/DP Antibody (CR3/43) - Azide and BSA Free [NBP2-54507] - Immunofluorescent staining of Raji cells. followed by goat anti-Mouse IgG-CF488 (Green). The nuclear counterstain is Red Dot (Red)



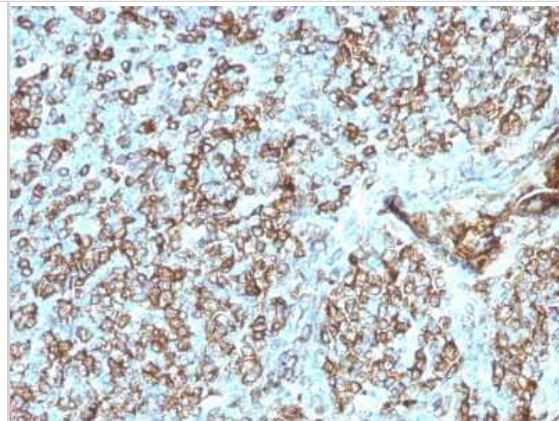
Immunohistochemistry-Paraffin: HLA DQ/DR/DP Antibody (CR3/43) - Azide and BSA Free [NBP2-54507] - Formalin-fixed, paraffin-embedded human Tonsil stained with HLA DQ/DR/DP Monoclonal Antibody (CR3/43).



Flow Cytometry: HLA DQ/DR/DP Antibody (CR3/43) - Azide and BSA Free [NBP2-54507] - Flow Cytometric Analysis of Human Raji cells using HLA DQ/DR/DP antibody (CR3/43).followed by goat anti-Mouse IgG-CF488 (Blue); Isotype control (Red).



Immunohistochemistry-Paraffin: HLA DQ/DR/DP Antibody (CR3/43) - Azide and BSA Free [NBP2-54507] - Formalin-fixed, paraffin-embedded human Tonsil stained with HLA DQ/DR/DP Monoclonal Antibody (CR3/43).





Novus Biologicals USA

10730 E. Briarwood Avenue
Centennial, CO 80112
USA
Phone: 303.730.1950
Toll Free: 1.888.506.6887
Fax: 303.730.1966
nb-customerservice@bio-techne.com

Bio-Techne Canada

21 Canmotor Ave
Toronto, ON M8Z 4E6
Canada
Phone: 905.827.6400
Toll Free: 855.668.8722
Fax: 905.827.6402
canada.inquires@bio-techne.com

Bio-Techne Ltd

19 Barton Lane
Abingdon Science Park
Abingdon, OX14 3NB, United Kingdom
Phone: (44) (0) 1235 529449
Free Phone: 0800 37 34 15
Fax: (44) (0) 1235 533420
info.EMEA@bio-techne.com

General Contact Information

www.novusbio.com
Technical Support: nb-technical@bio-techne.com
Orders: nb-customerservice@bio-techne.com
General: novus@novusbio.com

Products Related to NBP2-54507-100ug

HAF007	Goat anti-Mouse IgG Secondary Antibody [HRP]
NB720-B	Rabbit anti-Mouse IgG (H+L) Secondary Antibody [Biotin]
NBP1-43319-0.5mg	Mouse IgG1 Kappa Isotype Control (P3.6.2.8.1)
210-TA-005	TNF-alpha [Unconjugated]

Limitations

This product is for research use only and is not approved for use in humans or in clinical diagnosis. Primary Antibodies are guaranteed for 1 year from date of receipt.

For more information on our 100% guarantee, please visit www.novusbio.com/guarantee

Earn gift cards/discounts by submitting a review: www.novusbio.com/reviews/submit/NBP2-54507

Earn gift cards/discounts by submitting a publication using this product:
www.novusbio.com/publications

