

Product Datasheet

EpCAM/TROP1 Antibody (EGP40/1556R) - (ECD) - Azide and BSA Free

NBP2-54425-100ug

Unit Size: 100 ug

Store at -20 to -80C. Avoid freeze-thaw cycles.

www.novusbio.com



technical@novusbio.com

Publications: 1

Protocols, Publications, Related Products, Reviews, Research Tools and Images at:
www.novusbio.com/NBP2-54425

Updated 10/23/2024 v.20.1

Earn rewards for product reviews and publications.

Submit a publication at www.novusbio.com/publications

Submit a review at www.novusbio.com/reviews/destination/NBP2-54425



NBP2-54425-100ug

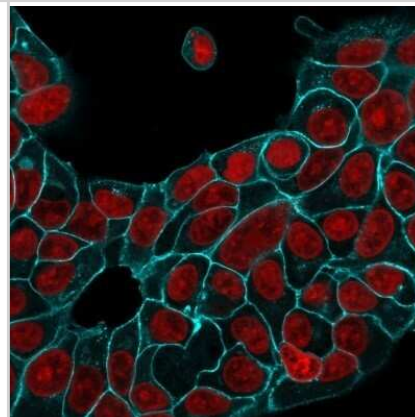
EpCAM/TROP1 Antibody (EGP40/1556R) - (ECD) - Azide and BSA Free

Product Information	
Unit Size	100 ug
Concentration	1 mg/ml
Storage	Store at -20 to -80C. Avoid freeze-thaw cycles.
Clonality	Monoclonal
Clone	EGP40/1556R
Preservative	No Preservative
Isotype	IgG
Purity	Protein A purified
Buffer	10 mM PBS
Product Description	
Description	1.0 mg/ml of antibody purified by Protein A. Prepared in 10mM PBS WITHOUT BSA & azide. Also available at 200 ug/ml WITH BSA & azide (NBP2-53266). Antibody with azide - store at 2 to 8C. Antibody without azide - store at -20 to -80C.
Host	Rabbit
Gene ID	4072
Gene Symbol	EPCAM
Species	Human, Mouse (Negative), Rat (Negative)
Reactivity Notes	Does not react with Mouse, Canine, Feline or Rat.
Marker	Epithelial Marker
Specificity/Sensitivity	EGP40 is a 40-43kDa transmembrane epithelial glycoprotein, also identified as epithelial specific antigen (ESA), or epithelial cellular adhesion molecule (EpCAM). It is expressed on baso-lateral cell surface in most simple epithelia and a vast majority of carcinomas with the exception of adult squamous epithelium, hepatocytes and gastric epithelial cells. This antibody has been used to distinguish adenocarcinoma from pleural mesothelioma and hepatocellular carcinoma. This antibody is also useful in distinguishing serous carcinomas of the ovary from mesothelioma.
Immunogen	Recombinant human full-length EpCAM/TROP1 protein (Uniprot: P16422)
Product Application Details	
Applications	Flow Cytometry, Immunocytochemistry/ Immunofluorescence, Immunohistochemistry, Immunohistochemistry-Paraffin, CyTOF-ready
Recommended Dilutions	Flow Cytometry 0.5 - 1 ug/million cells, Immunohistochemistry, Immunocytochemistry/ Immunofluorescence 1 - 2 ug/ml, Immunohistochemistry-Paraffin 0.5 - 1.0 ug/ml, CyTOF-ready
Application Notes	Immunohistochemistry (Formalin-fixed): 1-2ug/ml for 30 min at RT. Staining of formalin-fixed tissues requires heating tissue sections in 10mM Tris with 1mM EDTA, pH 9.0, for 45 min at 95C followed by cooling at RT for 20 minutes. Optimal dilution for a specific application should be determined.

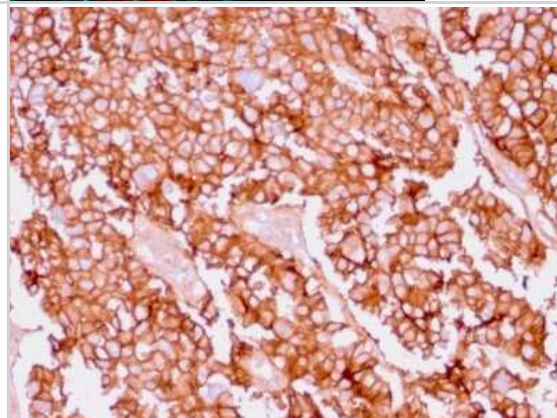


Images

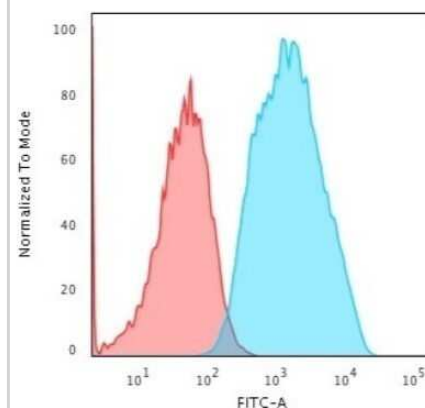
Immunocytochemistry/Immunofluorescence: EpCAM/TROP1 Antibody (EGP40/1556R) - Azide and BSA Free [NBP2-54425] - Immunofluorescence Analysis of MCF-7 cells labeling Ep-CAM with EpCAM/TROP1 Antibody (EGP40/1556R) followed by Goat anti-Rabbit IgG-CF488 (Cyan). Red Dot is used to stain the nuclei red.



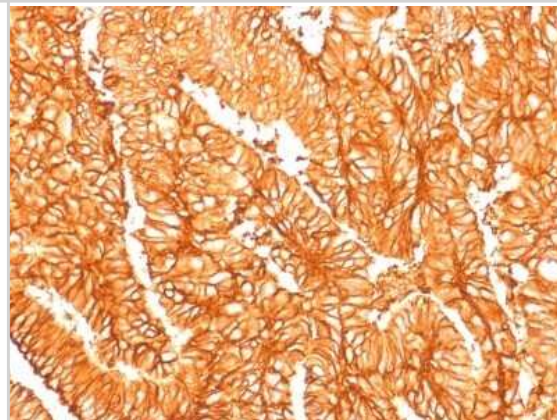
Immunohistochemistry-Paraffin: EpCAM/TROP1 Antibody (EGP40/1556R) - Azide and BSA Free [NBP2-54425] - Formalin-fixed, paraffin-embedded human Ovary stained with EpCAM/TROP1 Antibody (EGP40/1556R).



Flow Cytometry: EpCAM/TROP1 Antibody (EGP40/1556R) - Azide and BSA Free [NBP2-54425] - Flow Cytometric Analysis of trypsinised MCF-7 cells using EpCAM/TROP1 Antibody (EGP40/1556R). followed by Goat anti-Rabbit IgG-CF488 (Blue); Isotype Control (Red).



Immunohistochemistry-Paraffin: EpCAM/TROP1 Antibody (EGP40/1556R) - Azide and BSA Free [NBP2-54425] - Formalin-fixed, paraffin-embedded human Colon Carcinoma stained with Ep-CAM Recombinant Rabbit Monoclonal Antibody (EGP40/1556R).



Publications

Oppel F, Shao S, Schurmann M, et al An Effective Primary Head and Neck Squamous Cell Carcinoma In Vitro Model. Cells. 2019-06-07 [PMID: 31181618] (ICC/IF, Human)

Details:

Citation using the Azide and BSA Free version of this antibody.





Novus Biologicals USA

10730 E. Briarwood Avenue
Centennial, CO 80112
USA
Phone: 303.730.1950
Toll Free: 1.888.506.6887
Fax: 303.730.1966
nb-customerservice@bio-techne.com

Bio-Techne Canada

21 Canmotor Ave
Toronto, ON M8Z 4E6
Canada
Phone: 905.827.6400
Toll Free: 855.668.8722
Fax: 905.827.6402
canada.inquires@bio-techne.com

Bio-Techne Ltd

19 Barton Lane
Abingdon Science Park
Abingdon, OX14 3NB, United Kingdom
Phone: (44) (0) 1235 529449
Free Phone: 0800 37 34 15
Fax: (44) (0) 1235 533420
info.EMEA@bio-techne.com

General Contact Information

www.novusbio.com
Technical Support: nb-technical@bio-techne.com
Orders: nb-customerservice@bio-techne.com
General: novus@novusbio.com

Products Related to NBP2-54425-100ug

HAF008	Goat anti-Rabbit IgG Secondary Antibody [HRP]
NB7160	Goat anti-Rabbit IgG (H+L) Secondary Antibody [HRP]
NBP2-24891	Rabbit IgG Isotype Control
NBP2-52190-0.05mg	Recombinant Human EpCAM/TROP1 His Protein

Limitations

This product is for research use only and is not approved for use in humans or in clinical diagnosis. Primary Antibodies are guaranteed for 1 year from date of receipt.

For more information on our 100% guarantee, please visit www.novusbio.com/guarantee

Earn gift cards/discounts by submitting a review: www.novusbio.com/reviews/submit/NBP2-54425

Earn gift cards/discounts by submitting a publication using this product:
www.novusbio.com/publications

