

Product Datasheet

EpCAM/TROP1 Antibody (EGP40/1372) - (ECD) - Azide and BSA Free NBP2-54419-100ug

Unit Size: 100 ug

Store at -20 to -80C. Avoid freeze-thaw cycles.

www.novusbio.com



technical@novusbio.com

Protocols, Publications, Related Products, Reviews, Research Tools and Images at:
www.novusbio.com/NBP2-54419

Updated 10/23/2024 v.20.1

Earn rewards for product
reviews and publications.

Submit a publication at www.novusbio.com/publications

Submit a review at www.novusbio.com/reviews/destination/NBP2-54419



NBP2-54419-100ug

EpCAM/TROP1 Antibody (EGP40/1372) - (ECD) - Azide and BSA Free

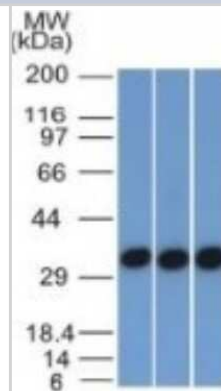
Product Information	
Unit Size	100 ug
Concentration	1 mg/ml
Storage	Store at -20 to -80C. Avoid freeze-thaw cycles.
Clonality	Monoclonal
Clone	EGP40/1372
Preservative	No Preservative
Isotype	IgG1 Kappa
Purity	Protein A or G purified
Buffer	10 mM PBS

Product Description	
Description	1.0 mg/ml of antibody purified from Bioreactor Concentrate by Protein A/G. Prepared in 10mM PBS WITHOUT BSA & azide. Also available at 200 ug/ml WITH BSA & azide (NBP2-53264). Antibody with azide - store at 2 to 8C. Antibody without azide - store at -20 to -80 C.
Host	Mouse
Gene ID	4072
Gene Symbol	EPCAM
Species	Human, Canine, Feline
Marker	Epithelial Marker
Specificity/Sensitivity	EGP40 is a 40-43kDa transmembrane epithelial glycoprotein, also identified as epithelial specific antigen (ESA), or epithelial cellular adhesion molecule (Ep-CAM). It is expressed on baso-lateral cell surface in most simple epithelia and a vast majority of carcinomas. This antibody has been used to distinguish adenocarcinoma from pleural mesothelioma and hepatocellular carcinoma. This antibody is also useful in distinguishing serous carcinomas of the ovary from mesothelioma.
Immunogen	Recombinant fragment from the extracellular domain of human EpCAM/TROP1 protein (around aa100-224) (exact sequence is proprietary) (Uniprot: P16422)

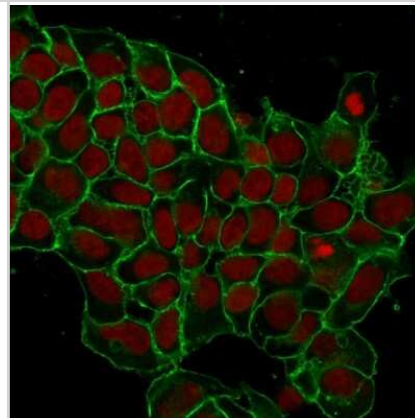
Product Application Details	
Applications	Western Blot, Flow Cytometry, Immunocytochemistry/ Immunofluorescence, Immunohistochemistry, Immunohistochemistry-Paraffin, Protein Array, CyTOF-ready
Recommended Dilutions	Western Blot 0.5 - 1 ug/ml, Flow Cytometry 0.5 - 1 ug/million cells, Immunohistochemistry, Immunocytochemistry/ Immunofluorescence 1 - 2 ug/ml, Immunohistochemistry-Paraffin 0.5 - 1.0 ug/ml, Protein Array, CyTOF-ready
Application Notes	Immunohistochemistry (Formalin-fixed): 1-2ug/ml for 30 min at RT. Staining of formalin-fixed tissues requires heating tissue sections in 10mM Tris with 1mM EDTA, pH 9.0, for 45 min at 95C followed by cooling at RT for 20 minutes. Optimal dilution for a specific application should be determined.

Images

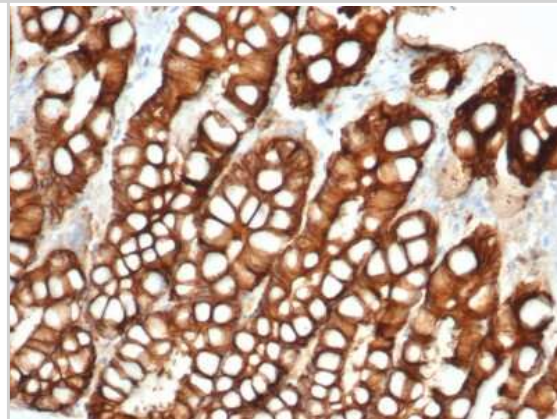
Western Blot: EpCAM/TROP1 Antibody (EGP40/1372) - (ECD) - Azide and BSA Free [NBP2-54419] - 293, A431 and HCT116 Cell Lysate using EpCAM, Monoclonal Antibody (EGP40/1372).



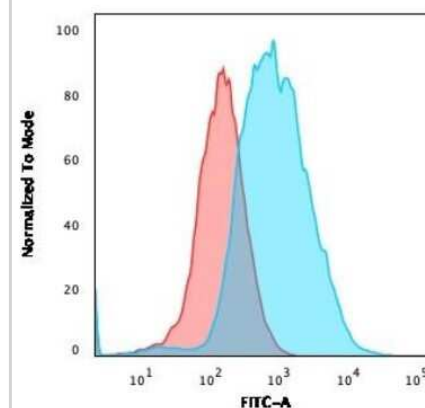
Immunocytochemistry/Immunofluorescence: EpCAM/TROP1 Antibody (EGP40/1372) - (ECD) - Azide and BSA Free [NBP2-54419] - Immunofluorescent staining of MCF-7 cells. NBP2-53264 labeled with CF488 (green). Nuclei are stained with Reddot (red)



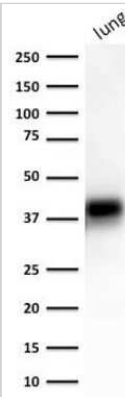
Immunohistochemistry-Paraffin: EpCAM/TROP1 Antibody (EGP40/1372) - (ECD) - Azide and BSA Free [NBP2-54419] - Formalin-fixed, paraffin-embedded feline (cat) small intestine stained with EpCAM/TROP1 Antibody (EGP40/1372) - (ECD).



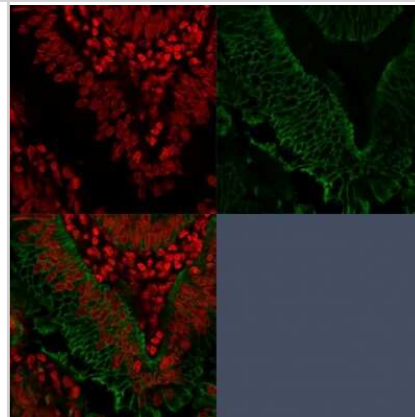
Flow Cytometry: EpCAM/TROP1 Antibody (EGP40/1372) - (ECD) - Azide and BSA Free [NBP2-54419] - Flow Cytometric Analysis of PFA-fixed MCF-7 cells using NBP2-53264 followed by goat anti-Mouse IgG-CF488 (Blue); Isotype Control (Red).



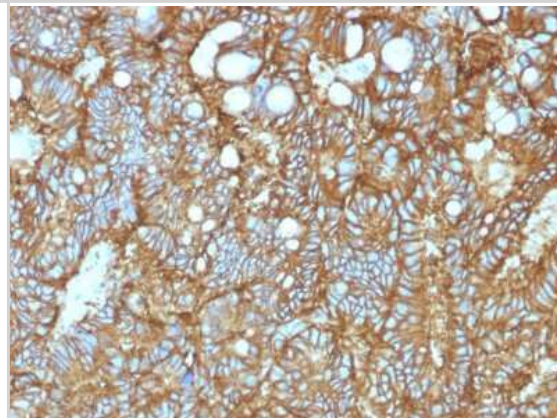
Western Blot: EpCAM/TROP1 Antibody (EGP40/1372) - (ECD) - Azide and BSA Free [NBP2-54419] - Western Blot of human lung lysate using NBP2-53264.



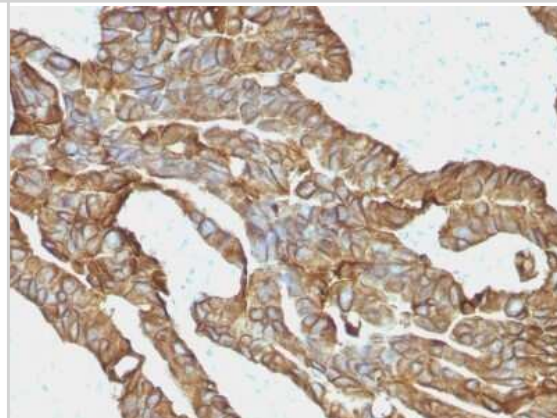
Immunocytochemistry/Immunofluorescence: EpCAM/TROP1 Antibody (EGP40/1372) - (ECD) - Azide and BSA Free [NBP2-54419] - Confocal Immunofluorescence of human Colorectal Carcinoma. NBP2-53264 labeled with CF488 (green); Nuclei are labeled with Reddot (red).



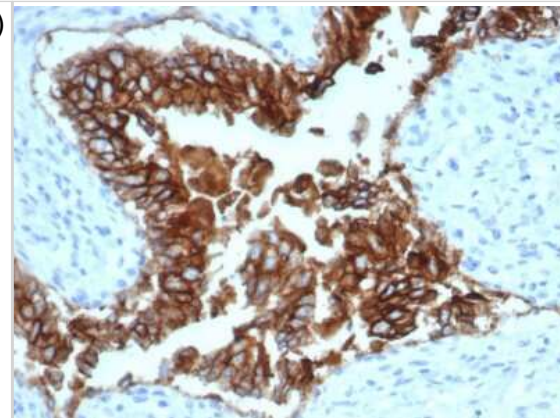
Immunohistochemistry-Paraffin: EpCAM/TROP1 Antibody (EGP40/1372) - (ECD) - Azide and BSA Free [NBP2-54419] - Formalin-fixed, paraffin-embedded human Hepatocellular Carcinoma stained with NBP2-53264.



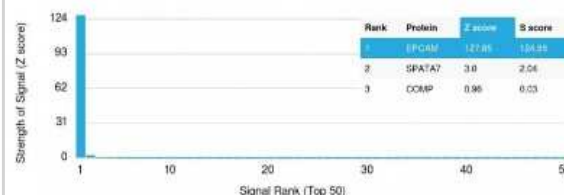
Immunohistochemistry-Paraffin: EpCAM/TROP1 Antibody (EGP40/1372) - (ECD) - Azide and BSA Free [NBP2-54419] - Formalin-fixed, paraffin-embedded Human Colorectal Carcinoma stained with EpCAM Monoclonal Antibody (EGP40/1372).



Immunohistochemistry-Paraffin: EpCAM/TROP1 Antibody (EGP40/1372) - (ECD) - Azide and BSA Free [NBP2-54419] - Formalin-fixed, paraffin-embedded canine (dog) bladder stained with EpCAM/TROP1 Antibody (EGP40/1372) - (ECD).



Protein Array: EpCAM/TROP1 Antibody (EGP40/1372) - (ECD) - Azide and BSA Free [NBP2-54419] - Z- and S- Score: The Z-score represents the strength of a signal that a monoclonal antibody (MAb) (in combination with a fluorescently-tagged anti-IgG secondary antibody) produces when binding to a particular protein on the HuProt™ array. Z-scores are described in units of standard deviations (SD's) above the mean value of all signals generated on that array. If targets on HuProt™ are arranged in descending order of the Z-score, the S-score is the difference (also in units of SD's) between the Z-score. S-score therefore represents the relative target specificity of a MAb to its intended target. A MAb is considered to specific to its intended target, if the MAb has an S-score of at least 2.5. For example, if a MAb binds to protein X with a Z-score of 43 and to protein Y with a Z-score of 14, then the S-score for the binding of that MAb to protein X is equal to 29.





Novus Biologicals USA

10730 E. Briarwood Avenue
Centennial, CO 80112
USA
Phone: 303.730.1950
Toll Free: 1.888.506.6887
Fax: 303.730.1966
nb-customerservice@bio-techne.com

Bio-Techne Canada

21 Canmotor Ave
Toronto, ON M8Z 4E6
Canada
Phone: 905.827.6400
Toll Free: 855.668.8722
Fax: 905.827.6402
canada.inquires@bio-techne.com

Bio-Techne Ltd

19 Barton Lane
Abingdon Science Park
Abingdon, OX14 3NB, United Kingdom
Phone: (44) (0) 1235 529449
Free Phone: 0800 37 34 15
Fax: (44) (0) 1235 533420
info.EMEA@bio-techne.com

General Contact Information

www.novusbio.com
Technical Support: nb-technical@bio-techne.com
Orders: nb-customerservice@bio-techne.com
General: novus@novusbio.com

Products Related to NBP2-54419-100ug

HAF007	Goat anti-Mouse IgG Secondary Antibody [HRP]
NB720-B	Rabbit anti-Mouse IgG (H+L) Secondary Antibody [Biotin]
NBP1-43319-0.5mg	Mouse IgG1 Kappa Isotype Control (P3.6.2.8.1)
NBP2-52190-0.05mg	Recombinant Human EpCAM/TROP1 His Protein

Limitations

This product is for research use only and is not approved for use in humans or in clinical diagnosis. Primary Antibodies are guaranteed for 1 year from date of receipt.

For more information on our 100% guarantee, please visit www.novusbio.com/guarantee

Earn gift cards/discounts by submitting a review: www.novusbio.com/reviews/submit/NBP2-54419

Earn gift cards/discounts by submitting a publication using this product:
www.novusbio.com/publications

