

Product Datasheet

CD3 epsilon Antibody (PC3/188A) - Azide and BSA Free NBP2-54405-100ug

Unit Size: 100 ug

Store at -20 to -80C. Avoid freeze-thaw cycles.

www.novusbio.com



technical@novusbio.com

Protocols, Publications, Related Products, Reviews, Research Tools and Images at:
www.novusbio.com/NBP2-54405

Updated 10/23/2024 v.20.1

Earn rewards for product
reviews and publications.

Submit a publication at www.novusbio.com/publications

Submit a review at www.novusbio.com/reviews/destination/NBP2-54405



NBP2-54405-100ug

CD3 epsilon Antibody (PC3/188A) - Azide and BSA Free

Product Information	
Unit Size	100 ug
Concentration	1 mg/ml
Storage	Store at -20 to -80C. Avoid freeze-thaw cycles.
Clonality	Monoclonal
Clone	PC3/188A
Preservative	No Preservative
Isotype	IgG1
Purity	Protein A or G purified
Buffer	10 mM PBS
Target Molecular Weight	20 kDa

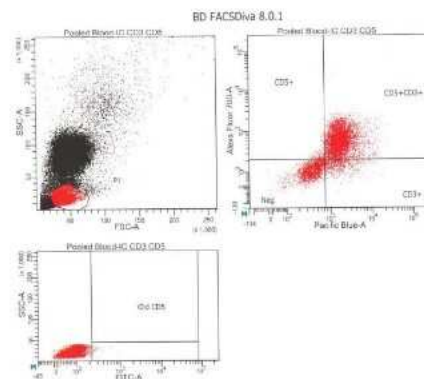
Product Description	
Description	1.0 mg/ml of antibody purified from Bioreactor Concentrate by Protein A/G. Prepared in 10mM PBS WITHOUT BSA & azide. Also available at 200 ug/ml WITH BSA & azide (NBP2-53386). Antibody with azide - store at 2 to 8C. Antibody without azide - store at -20 to -80 C.
Host	Mouse
Gene ID	916
Gene Symbol	CD3E
Species	Human, Chimpanzee
Reactivity Notes	Others not known.
Marker	T-Cell Marker
Specificity/Sensitivity	Recognizes the epsilon-chain of CD3, which consists of five different polypeptide chains (designated as gamma, delta, epsilon, zeta, and eta) with MW ranging from 16-28kDa. The CD3 complex is closely associated at the lymphocyte cell surface with the T cell antigen receptor (TCR). Reportedly, CD3 complex is involved in signal transduction to the T cell interior following antigen recognition. The CD3 antigen is first detectable in early thymocytes and probably represents one of the earliest signs of commitment to the T cell lineage. In cortical thymocytes, CD3 is predominantly intra-cytoplasmic. However, in medullary thymocytes, it appears on the T cell surface. CD3 antigen is a highly specific marker for T cells, and is present in majority of T cell neoplasms.
Immunogen	A synthetic peptide corresponding to amino acids 156-168 of the cytoplasmic domain of human CD3- chain (Uniprot: P07766)

Product Application Details	
Applications	Western Blot, Flow Cytometry, Immunocytochemistry/ Immunofluorescence, CyTOF-ready, Immunohistochemistry (Negative)
Recommended Dilutions	Western Blot 1 - 2 ug/ml, Flow Cytometry 0.5 - 1 ug/million cells, Immunocytochemistry/ Immunofluorescence 1 - 2 ug/ml, Immunohistochemistry (Negative), CyTOF-ready
Application Notes	Optimal dilution for a specific application should be determined. Western Blot: 1-2ug/ml for 60 minutes at RT.

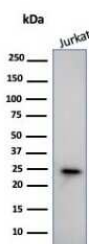


Images

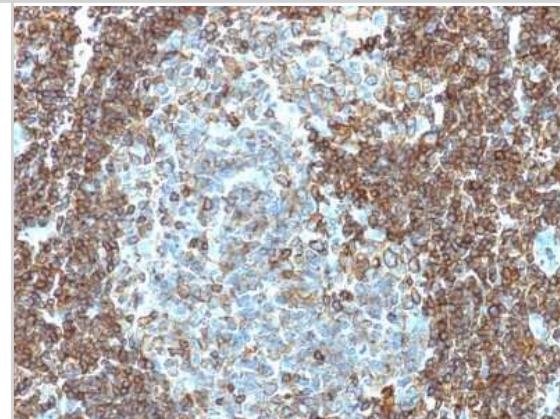
Flow Cytometry: CD3 epsilon Antibody (PC3/188A) - Azide and BSA Free [NBP2-54405] - Analysis with canine whole blood cells. From a verified customer review.



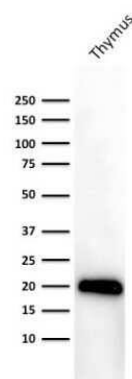
Western Blot: CD3 epsilon Antibody (PC3/188A) - Azide and BSA Free [NBP2-54405] - Western Blot Analysis of human Jurkat Cell lysate using CD3 epsilon antibody (PC3/188A).



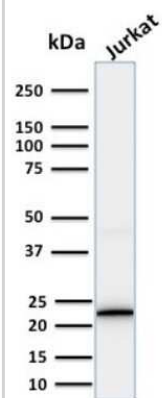
Immunohistochemistry-Paraffin: CD3 epsilon Antibody (PC3/188A) - Azide and BSA Free [NBP2-54405] - Formalin-fixed, paraffin-embedded human Tonsil stained with CD3 epsilon Monoclonal Antibody (PC3/188A).



Western Blot: CD3 epsilon Antibody (PC3/188A) - Azide and BSA Free [NBP2-54405] - Western Blot Analysis of human Thymus lysate using Purified CD3 epsilon Antibody (PC3/188A).



Western Blot: CD3 epsilon Antibody (PC3/188A) - Azide and BSA Free [NBP2-54405] - Western Blot Analysis of human Jurkat cell lysate using CD3 epsilon Antibody (PC3/188A).





Novus Biologicals USA

10730 E. Briarwood Avenue
Centennial, CO 80112
USA
Phone: 303.730.1950
Toll Free: 1.888.506.6887
Fax: 303.730.1966
nb-customerservice@bio-techne.com

Bio-Techne Canada

21 Canmotor Ave
Toronto, ON M8Z 4E6
Canada
Phone: 905.827.6400
Toll Free: 855.668.8722
Fax: 905.827.6402
canada.inquires@bio-techne.com

Bio-Techne Ltd

19 Barton Lane
Abingdon Science Park
Abingdon, OX14 3NB, United Kingdom
Phone: (44) (0) 1235 529449
Free Phone: 0800 37 34 15
Fax: (44) (0) 1235 533420
info.EMEA@bio-techne.com

General Contact Information

www.novusbio.com
Technical Support: nb-technical@bio-techne.com
Orders: nb-customerservice@bio-techne.com
General: novus@novusbio.com

Products Related to NBP2-54405-100ug

HAF007	Goat anti-Mouse IgG Secondary Antibody [HRP]
NB720-B	Rabbit anti-Mouse IgG (H+L) Secondary Antibody [Biotin]
NBP1-97005-0.5mg	Mouse IgG1 Isotype Control (MG1)
NBP2-22752	Recombinant Human CD3 epsilon His Protein

Limitations

This product is for research use only and is not approved for use in humans or in clinical diagnosis. Primary Antibodies are guaranteed for 1 year from date of receipt.

For more information on our 100% guarantee, please visit www.novusbio.com/guarantee

Earn gift cards/discounts by submitting a review: www.novusbio.com/reviews/submit/NBP2-54405

Earn gift cards/discounts by submitting a publication using this product:
www.novusbio.com/publications

