

# Product Datasheet

## CD3 epsilon Antibody (C3e/1308) [Alexa Fluor® 647] NBP2-54392AF647

Unit Size: 100 ul

Store at 4C in the dark.

[www.novusbio.com](http://www.novusbio.com)



[technical@novusbio.com](mailto:technical@novusbio.com)

### Publications: 2

Protocols, Publications, Related Products, Reviews, Research Tools and Images at:  
[www.novusbio.com/NBP2-54392AF647](http://www.novusbio.com/NBP2-54392AF647)

Updated 10/23/2024 v.20.1

Earn rewards for product  
reviews and publications.

Submit a publication at [www.novusbio.com/publications](http://www.novusbio.com/publications)

Submit a review at [www.novusbio.com/reviews/destination/NBP2-54392AF647](http://www.novusbio.com/reviews/destination/NBP2-54392AF647)



**NBP2-54392AF647**

CD3 epsilon Antibody (C3e/1308) [Alexa Fluor® 647]

<b>Product Information</b>	
<b>Unit Size</b>	100 ul
<b>Concentration</b>	Please see the vial label for concentration. If unlisted please contact technical services.
<b>Storage</b>	Store at 4C in the dark.
<b>Clonality</b>	Monoclonal
<b>Clone</b>	C3e/1308
<b>Preservative</b>	0.05% Sodium Azide
<b>Isotype</b>	IgG2b Kappa
<b>Conjugate</b>	Alexa Fluor 647
<b>Purity</b>	Protein A or G purified
<b>Buffer</b>	50mM Sodium Borate
<b>Product Description</b>	
<b>Host</b>	Mouse
<b>Gene ID</b>	916
<b>Gene Symbol</b>	CD3E
<b>Species</b>	Human, Mouse
<b>Reactivity Notes</b>	Mouse reactivity reported in scientific literature (PMID: 33428661).
<b>Marker</b>	T-Cell Marker
<b>Specificity/Sensitivity</b>	Recognizes the epsilon-chain of CD3, which consists of five different polypeptide chains (designated as gamma, delta, epsilon, zeta, and eta) with MW ranging from 16-28kDa. The CD3 complex is closely associated at the lymphocyte cell surface with the T cell antigen receptor (TCR). Reportedly, CD3 complex is involved in signal transduction to the T cell interior following antigen recognition. The CD3 antigen is first detectable in early thymocytes and probably represents one of the earliest signs of commitment to the T cell lineage. In cortical thymocytes, CD3 is predominantly intra-cytoplasmic. However, in medullary thymocytes, it appears on the T cell surface. CD3 antigen is a highly specific marker for T cells, and is present in majority of T cell neoplasms.
<b>Immunogen</b>	Recombinant human CD3 epsilon fragment (aa 23-119) (Uniprot: P07766)

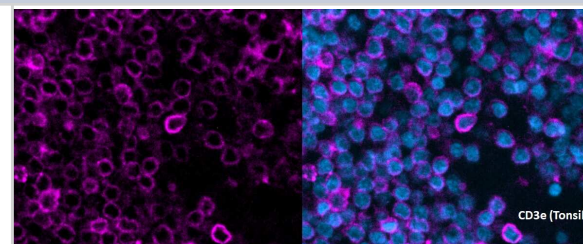


<b>Notes</b>	Alexa Fluor (R) products are provided under an intellectual property license from Life Technologies Corporation. The purchase of this product conveys to the buyer the non-transferable right to use the purchased product and components of the product only in research conducted by the buyer (whether the buyer is an academic or for-profit entity). The sale of this product is expressly conditioned on the buyer not using the product or its components, or any materials made using the product or its components, in any activity to generate revenue, which may include, but is not limited to use of the product or its components: (i) in manufacturing; (ii) to provide a service, information, or data in return for payment; (iii) for therapeutic, diagnostic or prophylactic purposes; or (iv) for resale, regardless of whether they are resold for use in research. For information on purchasing a license to this product for purposes other than as described above, contact Life Technologies Corporation, 5791 Van Allen Way, Carlsbad, CA 92008 USA or <a href="mailto:outlicensing@lifetech.com">outlicensing@lifetech.com</a> . This conjugate is made on demand. Actual recovery may vary from the stated volume of this product. The volume will be greater than or equal to the unit size stated on the datasheet.
--------------	--

<b>Product Application Details</b>	
<b>Applications</b>	Western Blot, Flow Cytometry, Flow (Intracellular), Immunohistochemistry, Immunohistochemistry-Paraffin, CyTOF-ready, Multiplex Immunoassay
<b>Recommended Dilutions</b>	Western Blot, Flow Cytometry, Immunohistochemistry, Immunohistochemistry-Paraffin, Flow (Intracellular), CyTOF-ready, Multiplex Immunoassay
<b>Application Notes</b>	Use in Multiplex Immunoassay reported in scientific literature (PMID: 31942075). Optimal dilution of this antibody should be experimentally determined.

## Images

Immunohistochemistry-Paraffin: Mouse Monoclonal CD3 epsilon Antibody (C3e/1308) [Alexa Fluor® 647] [NBP2-54392AF647] - Staining of T cells in human FFPE tonsil tissue. Antigen Retrieval at pH 9. Antibody incubation over night at 4C. Image from a verified customer review.



CD3 epsilon Antibody (C3e/1308) [Alexa Fluor® 647] [NBP2-54392AF647] - Vial of Alexa Fluor 647 conjugated antibody. Alexa Fluor 647 is optimally excited at 653 nm by the Red laser (633 or 640 nm) and has an emission maximum of 669 nm.



## Publications

Koedijk J, van der Werf I, Vermeulen M et al. Spatial analysis reveals distinct immune phenotypes and tertiary lymphoid structure-like aggregates in pediatric acute myeloid leukemia medRxiv 2023-03-08

Helmink BA, Reddy SM, Gao J et al. B cells and tertiary lymphoid structures promote immunotherapy response Nature. [PMID: 31942075] (MI, Human)





### Novus Biologicals USA

10730 E. Briarwood Avenue  
Centennial, CO 80112  
USA  
Phone: 303.730.1950  
Toll Free: 1.888.506.6887  
Fax: 303.730.1966  
nb-customerservice@bio-techne.com

### Bio-Techne Canada

21 Canmotor Ave  
Toronto, ON M8Z 4E6  
Canada  
Phone: 905.827.6400  
Toll Free: 855.668.8722  
Fax: 905.827.6402  
canada.inquires@bio-techne.com

### Bio-Techne Ltd

19 Barton Lane  
Abingdon Science Park  
Abingdon, OX14 3NB, United Kingdom  
Phone: (44) (0) 1235 529449  
Free Phone: 0800 37 34 15  
Fax: (44) (0) 1235 533420  
info.EMEA@bio-techne.com

### General Contact Information

www.novusbio.com  
Technical Support: nb-technical@bio-techne.com  
Orders: nb-customerservice@bio-techne.com  
General: novus@novusbio.com

### Products Related to NBP2-54392AF647

---

NBP1-43317AF647	Mouse IgG2b Kappa Light Chain Isotype Control (MG2b) [Alexa Fluor® 647]
NBP2-22752	Recombinant Human CD3 epsilon His Protein
210-TA-005	TNF-alpha [Unconjugated]
9850-CD-050	CD3 epsilon [Unconjugated]

---

### Limitations

This product is for research use only and is not approved for use in humans or in clinical diagnosis. Primary Antibodies are guaranteed for 1 year from date of receipt.

For more information on our 100% guarantee, please visit [www.novusbio.com/guarantee](http://www.novusbio.com/guarantee)

Earn gift cards/discounts by submitting a review: [www.novusbio.com/reviews/submit/NBP2-54392AF647](http://www.novusbio.com/reviews/submit/NBP2-54392AF647)

Earn gift cards/discounts by submitting a publication using this product:  
[www.novusbio.com/publications](http://www.novusbio.com/publications)

