

# Product Datasheet

## Cytokeratin 10 Antibody (SPM623) [mFluor Violet 450 SE] NBP2-54332MFV450

Unit Size: 0.1 ml

Store at 4C in the dark.

[www.novusbio.com](http://www.novusbio.com)



[technical@novusbio.com](mailto:technical@novusbio.com)

Protocols, Publications, Related Products, Reviews, Research Tools and Images at:  
[www.novusbio.com/NBP2-54332MFV450](http://www.novusbio.com/NBP2-54332MFV450)

Updated 10/26/2023 v.20.1

Earn rewards for product  
reviews and publications.

Submit a publication at [www.novusbio.com/publications](http://www.novusbio.com/publications)

Submit a review at [www.novusbio.com/reviews/destination/NBP2-54332MFV450](http://www.novusbio.com/reviews/destination/NBP2-54332MFV450)



**NBP2-54332MFV450**

Cytokeratin 10 Antibody (SPM623) [mFluor Violet 450 SE]

**Product Information**

<b>Unit Size</b>	0.1 ml
<b>Concentration</b>	Please see the vial label for concentration. If unlisted please contact technical services.
<b>Storage</b>	Store at 4C in the dark.
<b>Clonality</b>	Monoclonal
<b>Clone</b>	SPM623
<b>Preservative</b>	0.05% Sodium Azide
<b>Isotype</b>	IgG1 Kappa
<b>Conjugate</b>	mFluor Violet 450 SE
<b>Purity</b>	Protein A or G purified
<b>Buffer</b>	50mM Sodium Borate

**Product Description**

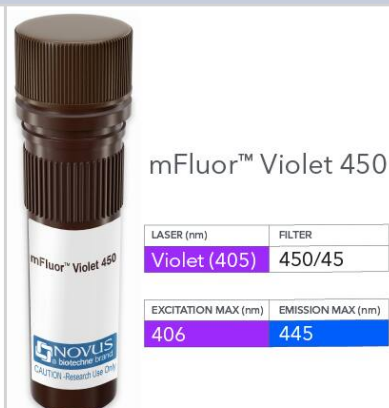
<b>Host</b>	Mouse
<b>Gene ID</b>	3858
<b>Gene Symbol</b>	KRT10
<b>Species</b>	Human, Canine, Feline
<b>Marker</b>	Suprabasal Epithelial Marker
<b>Immunogen</b>	Cytoskeletal preparation extracted from human ectocervical epithelium (Uniprot: P13645)
<b>Notes</b>	mFluor(TM) is a trademark of AAT Bioquest, Inc. This conjugate is made on demand. Actual recovery may vary from the stated volume of this product. The volume will be greater than or equal to the unit size stated on the datasheet.

**Product Application Details**

<b>Applications</b>	Flow Cytometry, Immunocytochemistry/ Immunofluorescence, Immunohistochemistry, Immunohistochemistry-Paraffin, CyTOF-ready
<b>Recommended Dilutions</b>	Flow Cytometry, Immunohistochemistry, Immunocytochemistry/ Immunofluorescence, Immunohistochemistry-Paraffin, CyTOF-ready
<b>Application Notes</b>	Optimal dilution of this antibody should be experimentally determined.

**Images**

Cytokeratin 10 Antibody (SPM623) [mFluor Violet 450 SE] [NBP2-54332MFV450] - Vial of mFluor Violet 450 conjugated antibody. mFluor Violet 450 is optimally excited at 406 nm by the Violet laser (405 nm) and has an emission maximum of 445 nm.





### **Novus Biologicals USA**

10730 E. Briarwood Avenue  
Centennial, CO 80112  
USA  
Phone: 303.730.1950  
Toll Free: 1.888.506.6887  
Fax: 303.730.1966  
nb-customerservice@bio-techne.com

### **Bio-Techne Canada**

21 Canmotor Ave  
Toronto, ON M8Z 4E6  
Canada  
Phone: 905.827.6400  
Toll Free: 855.668.8722  
Fax: 905.827.6402  
canada.inquires@bio-techne.com

### **Bio-Techne Ltd**

19 Barton Lane  
Abingdon Science Park  
Abingdon, OX14 3NB, United Kingdom  
Phone: (44) (0) 1235 529449  
Free Phone: 0800 37 34 15  
Fax: (44) (0) 1235 533420  
info.EMEA@bio-techne.com

### **General Contact Information**

www.novusbio.com  
Technical Support: nb-technical@bio-techne.com  
Orders: nb-customerservice@bio-techne.com  
General: novus@novusbio.com

### **Products Related to NBP2-54332MFV450**

---

H00003858-Q01-10ug	Recombinant Human, Cytokeratin 10 GST (N-Term) Protein
8184-CK-050	Choline Kinase beta [Unconjugated]
NBP3-18023	Human, Cytokeratin 10 ELISA Kit (Colorimetric)
NB300-223	Vimentin Antibody

---

### **Limitations**

This product is for research use only and is not approved for use in humans or in clinical diagnosis. Primary Antibodies are guaranteed for 1 year from date of receipt.

For more information on our 100% guarantee, please visit [www.novusbio.com/guarantee](http://www.novusbio.com/guarantee)

Earn gift cards/discounts by submitting a review: [www.novusbio.com/reviews/submit/NBP2-54332MFV450](http://www.novusbio.com/reviews/submit/NBP2-54332MFV450)

Earn gift cards/discounts by submitting a publication using this product:  
[www.novusbio.com/publications](http://www.novusbio.com/publications)

