

# Product Datasheet

## CD3 epsilon Antibody (PC3/188A) NBP2-53386-100ug

Unit Size: 100 ug

Store at 4C.

[www.novusbio.com](http://www.novusbio.com)



[technical@novusbio.com](mailto:technical@novusbio.com)

### Publications: 1

Protocols, Publications, Related Products, Reviews, Research Tools and Images at:  
[www.novusbio.com/NBP2-53386](http://www.novusbio.com/NBP2-53386)

Updated 10/23/2024 v.20.1

Earn rewards for product  
reviews and publications.

Submit a publication at [www.novusbio.com/publications](http://www.novusbio.com/publications)

Submit a review at [www.novusbio.com/reviews/destination/NBP2-53386](http://www.novusbio.com/reviews/destination/NBP2-53386)



**NBP2-53386-100ug**

CD3 epsilon Antibody (PC3/188A)

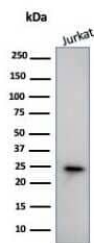
Product Information	
Unit Size	100 ug
Concentration	0.2 mg/ml
Storage	Store at 4C.
Clonality	Monoclonal
Clone	PC3/188A
Preservative	0.05% Sodium Azide
Isotype	IgG1
Purity	Protein A or G purified
Buffer	10 mM PBS with 0.05% BSA
Target Molecular Weight	20 kDa

Product Description	
Description	200ug/ml of antibody purified from Bioreactor Concentrate by Protein A or G. Prepared in 10 mM PBS with 0.05% BSA & 0.05% azide. Also available WITHOUT BSA & azide at 1.0 mg/ml. (NBP2-54405)  Antibody with azide - store at 2 to 8C. Antibody without azide - store at -20 to -80 C.
Host	Mouse
Gene ID	916
Gene Symbol	CD3E
Species	Human, Chimpanzee
Reactivity Notes	Others not known.
Marker	T-Cell Marker
Specificity/Sensitivity	Recognizes the epsilon-chain of CD3, which consists of five different polypeptide chains (designated as gamma, delta, epsilon, zeta, and eta) with MW ranging from 16-28kDa. The CD3 complex is closely associated at the lymphocyte cell surface with the T cell antigen receptor (TCR). Reportedly, CD3 complex is involved in signal transduction to the T cell interior following antigen recognition. The CD3 antigen is first detectable in early thymocytes and probably represents one of the earliest signs of commitment to the T cell lineage. In cortical thymocytes, CD3 is predominantly intra-cytoplasmic. However, in medullary thymocytes, it appears on the T cell surface. CD3 antigen is a highly specific marker for T cells, and is present in majority of T cell neoplasms.
Immunogen	A synthetic peptide corresponding to amino acids 156-168 of the cytoplasmic domain of human CD3- chain (Uniprot: P07766 )

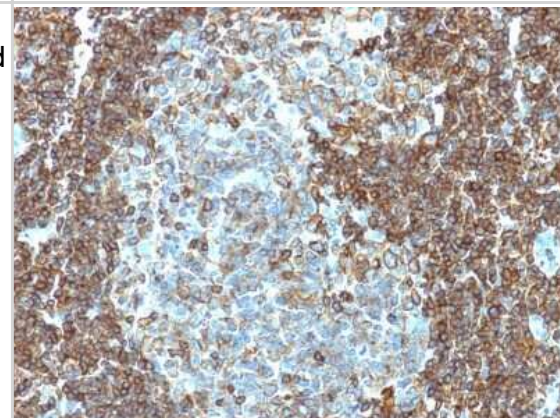
Product Application Details	
Applications	Western Blot, Flow Cytometry, Immunocytochemistry/ Immunofluorescence, Immunohistochemistry (Negative)
Recommended Dilutions	Western Blot 1-2 ug/ml, Flow Cytometry 0.5-1 ug/million cells, Immunocytochemistry/ Immunofluorescence 1-2 ug/ml, Immunohistochemistry (Negative)
Application Notes	Optimal dilution for a specific application should be determined. Western Blot: 1-2ug/ml for 60 minutes at RT.

## Images

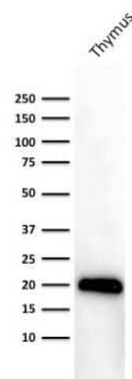
Western Blot: CD3 epsilon Antibody (PC3/188A) [NBP2-53386] - Western Blot Analysis of human Jurkat Cell lysate using CD3 epsilon antibody (PC3/188A).



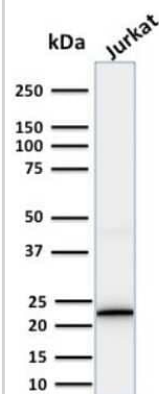
Immunohistochemistry-Paraffin: CD3 epsilon Antibody (PC3/188A) [NBP2-53386] - Formalin-fixed, paraffin-embedded human Tonsil stained with CD3 epsilon Monoclonal Antibody (PC3/188A).



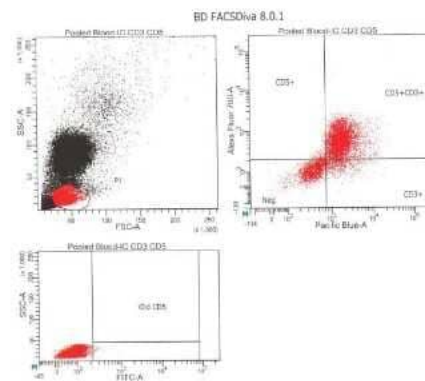
Western Blot: CD3 epsilon Antibody (PC3/188A) [NBP2-53386] - Western Blot Analysis of human Thymus lysate using Purified CD3 epsilon Antibody (PC3/188A).



Western Blot: CD3 epsilon Antibody (PC3/188A) [NBP2-53386] - Western Blot Analysis of human Jurkat cell lysate using CD3 epsilon Antibody (PC3/188A).



Flow Cytometry: CD3 epsilon Antibody (PC3/188A) [NBP2-53386] - Analysis with canine whole blood cells. From a verified customer review.



## Publications

Tsugami Y, Nakayama S, Suzuki N et al. Investigating mammary glands of lactating goats for the presence of tertiary lymphoid organs *Frontiers in immunology* 2022-08-10 [PMID: 36032165] (IHC-P, Goat)

Details:

Mammary gland tissue from Tokara and Shiba Goats



### **Novus Biologicals USA**

10730 E. Briarwood Avenue  
Centennial, CO 80112  
USA  
Phone: 303.730.1950  
Toll Free: 1.888.506.6887  
Fax: 303.730.1966  
nb-customerservice@bio-techne.com

### **Bio-Techne Canada**

21 Canmotor Ave  
Toronto, ON M8Z 4E6  
Canada  
Phone: 905.827.6400  
Toll Free: 855.668.8722  
Fax: 905.827.6402  
canada.inquires@bio-techne.com

### **Bio-Techne Ltd**

19 Barton Lane  
Abingdon Science Park  
Abingdon, OX14 3NB, United Kingdom  
Phone: (44) (0) 1235 529449  
Free Phone: 0800 37 34 15  
Fax: (44) (0) 1235 533420  
info.EMEA@bio-techne.com

### **General Contact Information**

www.novusbio.com  
Technical Support: nb-technical@bio-techne.com  
Orders: nb-customerservice@bio-techne.com  
General: novus@novusbio.com

### **Products Related to NBP2-53386-100ug**

---

HAF007	Goat anti-Mouse IgG Secondary Antibody [HRP]
NB720-B	Rabbit anti-Mouse IgG (H+L) Secondary Antibody [Biotin]
NBP1-97005-0.5mg	Mouse IgG1 Isotype Control (MG1)
NBP2-22752	Recombinant Human CD3 epsilon His Protein

---

### **Limitations**

This product is for research use only and is not approved for use in humans or in clinical diagnosis. Primary Antibodies are guaranteed for 1 year from date of receipt.

For more information on our 100% guarantee, please visit [www.novusbio.com/guarantee](http://www.novusbio.com/guarantee)

Earn gift cards/discounts by submitting a review: [www.novusbio.com/reviews/submit/NBP2-53386](http://www.novusbio.com/reviews/submit/NBP2-53386)

Earn gift cards/discounts by submitting a publication using this product:  
[www.novusbio.com/publications](http://www.novusbio.com/publications)

