

Product Datasheet

CD20 Antibody (rIGEL/773)

NBP2-53190-100ug

Unit Size: 100 ug

Store at 4C.

www.novusbio.com



technical@novusbio.com

Publications: 1

Protocols, Publications, Related Products, Reviews, Research Tools and Images at:
www.novusbio.com/NBP2-53190

Updated 10/23/2024 v.20.1

Earn rewards for product reviews and publications.

Submit a publication at www.novusbio.com/publications

Submit a review at www.novusbio.com/reviews/destination/NBP2-53190



NBP2-53190-100ug

CD20 Antibody (rIGEL/773)

Product Information	
Unit Size	100 ug
Concentration	0.2 mg/ml
Storage	Store at 4C.
Clonality	Monoclonal
Clone	rIGEL/773
Preservative	0.05% Sodium Azide
Isotype	IgG1 Kappa
Purity	Protein A or G purified
Buffer	10 mM PBS with 0.05% BSA

Product Description	
Description	200ug/ml of recombinant MAb purified by Protein A or G. Prepared in 10mM PBS with 0.05% BSA & 0.05% azide. Also available WITHOUT BSA & azide at 1.0mg/ml. (NBP2-54591) Antibody with azide - store at 2 to 8C. Antibody without azide - store at -20 to -80 C.
Host	Mouse
Gene ID	931
Gene Symbol	MS4A1
Species	Human
Marker	B-Cell Marker
Specificity/Sensitivity	Recognizes a protein of 30-33kDa, which is identified as CD20. It is a non-Ig differentiation antigen of B-cells and its expression is restricted to normal and neoplastic B-cells, being absent from all other leukocytes and tissues. CD20 is expressed by pre-B-cells and persists during all stages of B-cell maturation but is lost upon terminal differentiation into plasma cells. This monoclonal antibody can be used for immunophenotyping of leukemia and malignant cells, B lymphocyte detection in peripheral blood and B cell localization in tissues. It reacts with the majority of B-cells present in peripheral blood and lymphoid tissues and their derived lymphomas. In lymphoid tissue, germinal center blasts and B-immunoblasts are particularly reactive. It is a reliable antibody for ascribing a B-cell phenotype in known lymphoid tissues. Rarely, CD20-positive T-cell lymphomas have been reported. Reactivity has also been noted with Reed-Sternberg cells in cases of Hodgkin's disease, particularly of lymphocyte predominant type.
Immunogen	Recombinant full-length human CD20 fragment (Uniprot: P11836)

Product Application Details	
Applications	Flow Cytometry, Immunocytochemistry/ Immunofluorescence, Immunohistochemistry, Immunohistochemistry-Paraffin, Protein Array
Recommended Dilutions	Flow Cytometry 1-2 ug/million cells, Immunohistochemistry, Immunocytochemistry/ Immunofluorescence 1-2 ug/ml, Immunohistochemistry-Paraffin 1-2 ug/ml, Protein Array

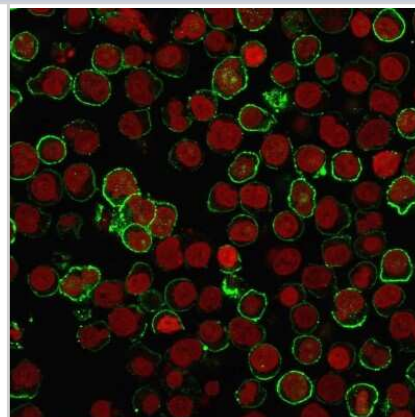


Application Notes

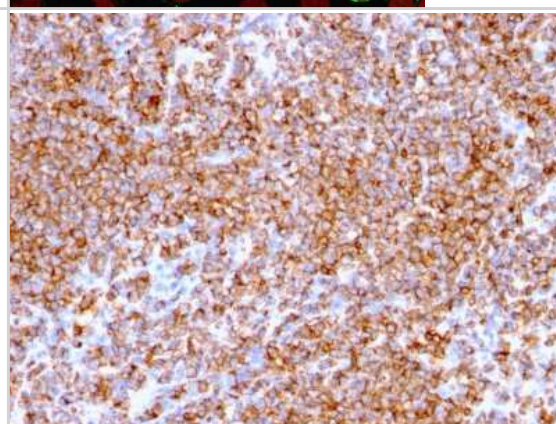
Immunohistochemistry (Formalin-fixed): 1-2ug/ml for 30 minutes at RT. Staining of formalin-fixed tissues requires heating tissue sections in 10mM Tris with 1mM EDTA, pH 9.0, for 45 min at 95C followed by cooling at RT for 20 minutes. Optimal dilution for a specific application should be determined.

Images

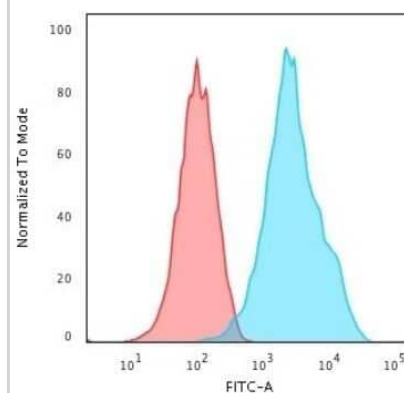
Immunocytochemistry/Immunofluorescence: CD20 Antibody (rIGEL/773) [NBP2-53190] - Immunofluorescence staining of Raji cells using CD20 Antibody (rIGEL/773) followed by goat anti-Mouse IgG conjugated to CF488 (green). Nuclei are stained with Red Dot.



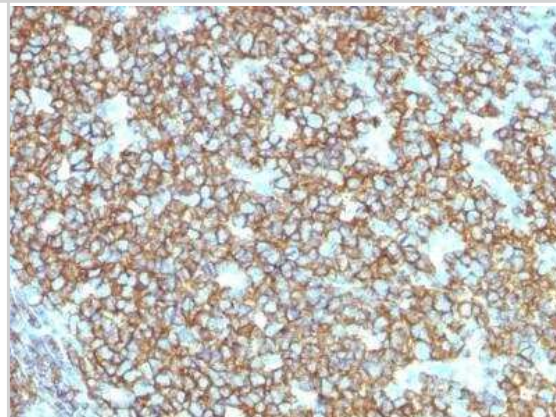
Immunohistochemistry-Paraffin: CD20 Antibody (rIGEL/773) [NBP2-53190] - Formalin-fixed, paraffin-embedded human lymph node stained with CD20 Antibody (rIGEL/773).



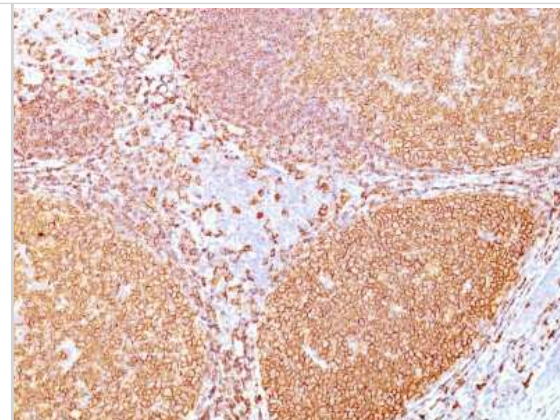
Flow Cytometry: CD20 Antibody (rIGEL/773) [NBP2-53190] - Flow Cytometric Analysis of Raji cells using CD20 Antibody (rIGEL/773) followed by Goat anti-Mouse IgG-CF488 (Blue); Isotype Control (Red).



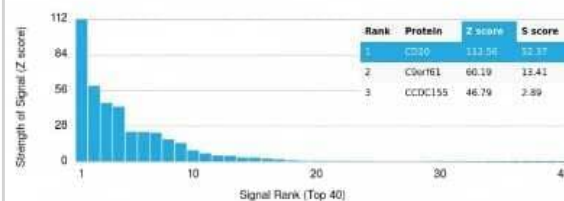
Immunohistochemistry-Paraffin: CD20 Antibody (rIGEL/773) [NBP2-53190] - Formalin-fixed, paraffin-embedded human Tonsil stained with CD20 Recombinant Mouse Monoclonal Antibody (rIGEL/773).



Immunohistochemistry-Paraffin: CD20 Antibody (rIGEL/773) [NBP2-53190] - Formalin-fixed, paraffin-embedded human tonsil stained with CD20 Antibody (rIGEL/773).



Protein Array: CD20 Antibody (rIGEL/773) [NBP2-53190] - Analysis of Protein Array containing more than 19,000 full-length human proteins using CD20 Antibody (rIGEL/773).



Publications

Mascharak S, Guo JL, Foster DS et al. Desmoplastic stromal signatures predict patient outcomes in pancreatic ductal adenocarcinoma Cell reports. Medicine 2023-10-11 [PMID: 37865092]



Novus Biologicals USA

10730 E. Briarwood Avenue
Centennial, CO 80112
USA
Phone: 303.730.1950
Toll Free: 1.888.506.6887
Fax: 303.730.1966
nb-customerservice@bio-techne.com

Bio-Techne Canada

21 Canmotor Ave
Toronto, ON M8Z 4E6
Canada
Phone: 905.827.6400
Toll Free: 855.668.8722
Fax: 905.827.6402
canada.inquires@bio-techne.com

Bio-Techne Ltd

19 Barton Lane
Abingdon Science Park
Abingdon, OX14 3NB, United Kingdom
Phone: (44) (0) 1235 529449
Free Phone: 0800 37 34 15
Fax: (44) (0) 1235 533420
info.EMEA@bio-techne.com

General Contact Information

www.novusbio.com
Technical Support: nb-technical@bio-techne.com
Orders: nb-customerservice@bio-techne.com
General: novus@novusbio.com

Products Related to NBP2-53190-100ug

HAF007	Goat anti-Mouse IgG Secondary Antibody [HRP]
NB720-B	Rabbit anti-Mouse IgG (H+L) Secondary Antibody [Biotin]
NBP1-43319-0.5mg	Mouse IgG1 Kappa Isotype Control (P3.6.2.8.1)
NBP2-61455-10ug	Recombinant Human CD20 His Protein

Limitations

This product is for research use only and is not approved for use in humans or in clinical diagnosis. Primary Antibodies are guaranteed for 1 year from date of receipt.

For more information on our 100% guarantee, please visit www.novusbio.com/guarantee

Earn gift cards/discounts by submitting a review: www.novusbio.com/reviews/submit/NBP2-53190

Earn gift cards/discounts by submitting a publication using this product:
www.novusbio.com/publications

