

# Product Datasheet

## EGFR Antibody (Matuzumab) - Chimeric - Azide and BSA Free NBP2-52685-0.2mg

Unit Size: 0.2 mg

Store at 4C for up to 3 months. For longer storage, aliquot and store at -20C.

[www.novusbio.com](http://www.novusbio.com)



[technical@novusbio.com](mailto:technical@novusbio.com)

Protocols, Publications, Related Products, Reviews, Research Tools and Images at:  
[www.novusbio.com/NBP2-52685](http://www.novusbio.com/NBP2-52685)

Updated 10/23/2024 v.20.1

Earn rewards for product  
reviews and publications.

Submit a publication at [www.novusbio.com/publications](http://www.novusbio.com/publications)

Submit a review at [www.novusbio.com/reviews/destination/NBP2-52685](http://www.novusbio.com/reviews/destination/NBP2-52685)



**NBP2-52685-0.2mg**

EGFR Antibody (Matuzumab) - Chimeric - Azide and BSA Free

Product Information	
Unit Size	0.2 mg
Concentration	1 mg/ml
Storage	Store at 4C for up to 3 months. For longer storage, aliquot and store at -20C.
Clonality	Monoclonal
Clone	Matuzumab
Preservative	0.02% Proclin 300
Isotype	IgG Kappa
Purity	Protein A purified
Buffer	PBS

Product Description	
Host	Rabbit
Gene ID	1956
Gene Symbol	EGFR
Species	Human
Specificity/Sensitivity	This antibody binds the extracellular domain III of the human EGFR and does not cross react with murine EGFR. It was also reported that residues S460/G461 in EGFR domain III are essential components of the epitope. This antibody binds at a site distinct from the EGF binding site, preventing conformational re-arrangement required for dimerization. This antibody can only recognize the active form of EGFR. The antibody binds to both glyco- and aglyco receptor forms.
Immunogen	The parental mouse antibody was generated by immunizing BALB/c mice intraperitoneally with A431 cells in phosphate buffered saline (PBS). Later on the humanized version of the antibody was created by grafting CDRs of the murine antibody onto human constant regions.

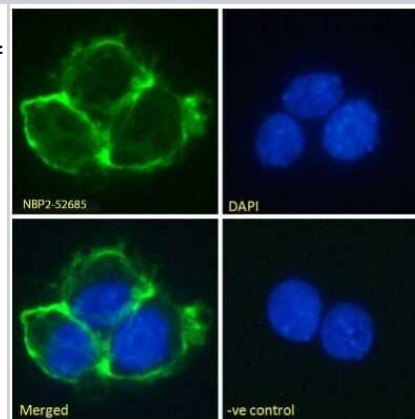
Product Application Details	
Applications	Western Blot, ELISA, Flow Cytometry, Immunocytochemistry/ Immunofluorescence, Block/Neutralize, CyTOF-ready
Recommended Dilutions	Western Blot 1:100 - 1:2000, Flow Cytometry 1:10 - 1:1000, ELISA, Immunocytochemistry/ Immunofluorescence, CyTOF-ready, Block/Neutralize
Application Notes	This antibody is Cytof ready. This chimeric rabbit antibody was made using the variable domain sequences of the original Human IgG1 format, for improved compatibility with existing reagents, assays and techniques. This antibody binds to human EGFR at a site distinct from the antigen binding site, preventing conformational re-arrangement required for dimerization, a process essential for high-affinity ligand binding (Schmiedel 2008).



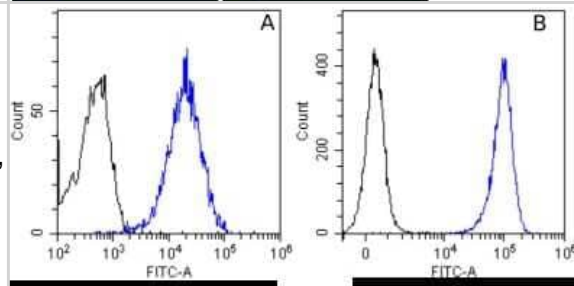
## Images

Immunocytochemistry/Immunofluorescence: EGFR Antibody (Matuzumab) - Chimeric [NBP2-52685] - Immunofluorescence staining of fixed A431 cells with anti-EGFR antibody Matuzumab.

Immunofluorescence analysis of unpermeabilised paraformaldehyde fixed A431 cells on Shi-fix coverslips stained with the chimeric rabbit version of Matuzumab (NBP2-52685) at 10 ug/ml for 1h followed by Alexa Fluor 488 secondary antibody (1 ug/ml), showing membrane staining. The nuclear stain is DAPI (blue). Panels show from left-right, top-bottom NBP2-52685, DAPI, merged channels and an isotype control. The isotype control was stained with unimmunised rabbit IgG followed by Alexa Fluor 488 secondary antibody.



Flow Cytometry: EGFR Antibody (Matuzumab) - Chimeric [NBP2-52685] - Flow-cytometry using the anti-EGFR antibody Matuzumab. HeLa (A) and A431 (B) cells were stained with unimmunized rabbit IgG antibody (black line) or the rabbit-chimeric version of Matuzumab (NBP2-52685, blue line) at a concentration of 10 ug/ml for 30 mins at RT. After washing, bound antibody was detected using an anti-rabbit IgG JK (FITC-conjugate) antibody at 2 ug/ml and cells analyzed on a FACSCanto flow-cytometer.





### **Novus Biologicals USA**

10730 E. Briarwood Avenue  
Centennial, CO 80112  
USA  
Phone: 303.730.1950  
Toll Free: 1.888.506.6887  
Fax: 303.730.1966  
nb-customerservice@bio-techne.com

### **Bio-Techne Canada**

21 Canmotor Ave  
Toronto, ON M8Z 4E6  
Canada  
Phone: 905.827.6400  
Toll Free: 855.668.8722  
Fax: 905.827.6402  
canada.inquires@bio-techne.com

### **Bio-Techne Ltd**

19 Barton Lane  
Abingdon Science Park  
Abingdon, OX14 3NB, United Kingdom  
Phone: (44) (0) 1235 529449  
Free Phone: 0800 37 34 15  
Fax: (44) (0) 1235 533420  
info.EMEA@bio-techne.com

### **General Contact Information**

www.novusbio.com  
Technical Support: nb-technical@bio-techne.com  
Orders: nb-customerservice@bio-techne.com  
General: novus@novusbio.com

### **Products Related to NBP2-52685-0.2mg**

---

HAF008	Goat anti-Rabbit IgG Secondary Antibody [HRP]
NB7160	Goat anti-Rabbit IgG (H+L) Secondary Antibody [HRP]
NBP2-52952PEP	EGFR Recombinant Protein Antigen
236-EG-200	EGF [Unconjugated]

---

### **Limitations**

This product is for research use only and is not approved for use in humans or in clinical diagnosis. Primary Antibodies are guaranteed for 1 year from date of receipt.

For more information on our 100% guarantee, please visit [www.novusbio.com/guarantee](http://www.novusbio.com/guarantee)

Earn gift cards/discounts by submitting a review: [www.novusbio.com/reviews/submit/NBP2-52685](http://www.novusbio.com/reviews/submit/NBP2-52685)

Earn gift cards/discounts by submitting a publication using this product:  
[www.novusbio.com/publications](http://www.novusbio.com/publications)

