

Product Datasheet

CD35 Antibody (8C12) [PE] - Chimeric NBP2-52668PE

Unit Size: 0.1 ml

Store at 4C in the dark.

www.novusbio.com



technical@novusbio.com

Protocols, Publications, Related Products, Reviews, Research Tools and Images at:
www.novusbio.com/NBP2-52668PE

Updated 10/23/2024 v.20.1

Earn rewards for product
reviews and publications.

Submit a publication at www.novusbio.com/publications

Submit a review at www.novusbio.com/reviews/destination/NBP2-52668PE



NBP2-52668PE

CD35 Antibody (8C12) [PE] - Chimeric

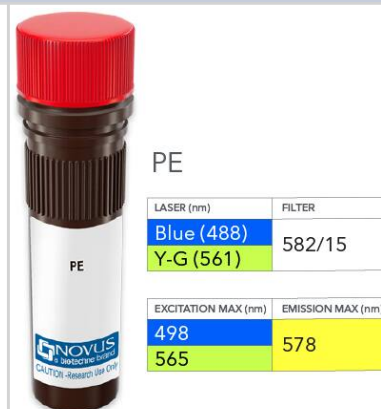
Product Information	
Unit Size	0.1 ml
Concentration	Please see the vial label for concentration. If unlisted please contact technical services.
Storage	Store at 4C in the dark.
Clonality	Monoclonal
Clone	8C12
Preservative	0.05% Sodium Azide
Isotype	IgG Kappa
Conjugate	PE
Purity	Protein A purified
Buffer	PBS

Product Description	
Host	Rabbit
Gene ID	1378
Gene Symbol	CR1
Species	Mouse
Reactivity Notes	Mouse
Specificity/Sensitivity	Recognises an epitope on CD35 (CR1, 190 kDa), but not on CD21 (CR2, 145-150 kDa), which are alternative splice variants of primary Cr2 gene transcripts.
Immunogen	Purified murine CR1 protein.

Product Application Details	
Applications	Western Blot, Flow Cytometry, Immunohistochemistry, Immunohistochemistry-Frozen, Immunoprecipitation, CyTOF-ready
Recommended Dilutions	Western Blot, Flow Cytometry, Immunohistochemistry, Immunoprecipitation, Immunohistochemistry-Frozen, CyTOF-ready
Application Notes	Optimal dilution of this antibody should be experimentally determined.

Images

CD35 Antibody (8C12) [PE] - Chimeric [NBP2-52668PE] - Vial of PE conjugated antibody. PE has two excitation maxima, 498 nm excited by the Blue laser (488 nm) and 565 nm excited by the Yellow-Green laser (561 nm). Both result in emission at 578 nm.





Novus Biologicals USA

10730 E. Briarwood Avenue
Centennial, CO 80112
USA
Phone: 303.730.1950
Toll Free: 1.888.506.6887
Fax: 303.730.1966
nb-customerservice@bio-techne.com

Bio-Techne Canada

21 Canmotor Ave
Toronto, ON M8Z 4E6
Canada
Phone: 905.827.6400
Toll Free: 855.668.8722
Fax: 905.827.6402
canada.inquires@bio-techne.com

Bio-Techne Ltd

19 Barton Lane
Abingdon Science Park
Abingdon, OX14 3NB, United Kingdom
Phone: (44) (0) 1235 529449
Free Phone: 0800 37 34 15
Fax: (44) (0) 1235 533420
info.EMEA@bio-techne.com

General Contact Information

www.novusbio.com
Technical Support: nb-technical@bio-techne.com
Orders: nb-customerservice@bio-techne.com
General: novus@novusbio.com

Products Related to NBP2-52668PE

NBP2-13870PEP	CD35 Recombinant Protein Antigen
210-TA-005	TNF-alpha [Unconjugated]
5748-CD-050	CD35
NB110-89474	CD11b Antibody - BSA Free

Limitations

This product is for research use only and is not approved for use in humans or in clinical diagnosis. Primary Antibodies are guaranteed for 1 year from date of receipt.

For more information on our 100% guarantee, please visit www.novusbio.com/guarantee

Earn gift cards/discounts by submitting a review: www.novusbio.com/reviews/submit/NBP2-52668PE

Earn gift cards/discounts by submitting a publication using this product:
www.novusbio.com/publications

