

# Product Datasheet

## CD25/IL-2R alpha Antibody (Basiliximab) [PE] - Chimeric NBP2-52661PE

Unit Size: 0.1 ml

Store at 4C in the dark.

[www.novusbio.com](http://www.novusbio.com)



[technical@novusbio.com](mailto:technical@novusbio.com)

Protocols, Publications, Related Products, Reviews, Research Tools and Images at:  
[www.novusbio.com/NBP2-52661PE](http://www.novusbio.com/NBP2-52661PE)

Updated 10/23/2024 v.20.1

Earn rewards for product  
reviews and publications.

Submit a publication at [www.novusbio.com/publications](http://www.novusbio.com/publications)

Submit a review at [www.novusbio.com/reviews/destination/NBP2-52661PE](http://www.novusbio.com/reviews/destination/NBP2-52661PE)



**NBP2-52661PE**

CD25/IL-2R alpha Antibody (Basiliximab) [PE] - Chimeric

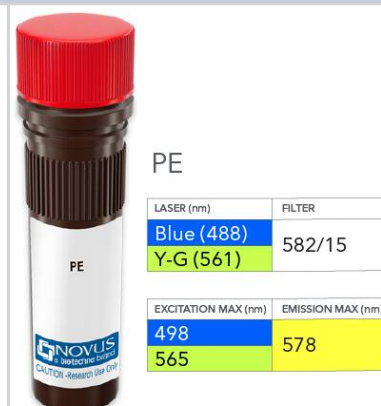
Product Information	
Unit Size	0.1 ml
Concentration	Please see the vial label for concentration. If unlisted please contact technical services.
Storage	Store at 4C in the dark.
Clonality	Monoclonal
Clone	Basiliximab
Preservative	0.05% Sodium Azide
Isotype	IgG Kappa
Conjugate	PE
Purity	Protein A purified
Buffer	PBS

Product Description	
Host	Rabbit
Gene ID	3559
Gene Symbol	IL2RA
Species	Human, Cynomolgus Monkey, Rhesus Macaque
Specificity/Sensitivity	Basiliximab recognises the human IL-2R and binds to the epitope (116)ERIYHFV (122) within the extracellular domain of the CD25 subunit -binding is abolished when 2 or more residues within the epitope are mutated. This epitope overlaps with the interaction site of CD25 and IL-2. CD25 is found in the high-affinity IL-2R ((alpha)(beta)(gamma)c) -T cells only express CD25 upon activation. IL-2 binding to IL-2R on T cells modulates proliferation and differentiation.
Immunogen	Basiliximab was prepared by immunizing BALB/c mice with CTC 16 cells.

Product Application Details	
Applications	Western Blot, Flow Cytometry, Immunocytochemistry/ Immunofluorescence, Immunohistochemistry, Block/Neutralize, CyTOF-ready
Recommended Dilutions	Western Blot, Flow Cytometry, Immunohistochemistry, Immunocytochemistry/ Immunofluorescence, CyTOF-ready, Block/Neutralize
Application Notes	Optimal dilution of this antibody should be experimentally determined.

**Images**

CD25/IL-2R alpha Antibody (Basiliximab) [PE] - Chimeric [NBP2-52661PE] - Vial of PE conjugated antibody. PE has two excitation maxima, 498 nm excited by the Blue laser (488 nm) and 565 nm excited by the Yellow-Green laser (561 nm). Both result in emission at 578 nm.





### **Novus Biologicals USA**

10730 E. Briarwood Avenue  
Centennial, CO 80112  
USA  
Phone: 303.730.1950  
Toll Free: 1.888.506.6887  
Fax: 303.730.1966  
nb-customerservice@bio-techne.com

### **Bio-Techne Canada**

21 Canmotor Ave  
Toronto, ON M8Z 4E6  
Canada  
Phone: 905.827.6400  
Toll Free: 855.668.8722  
Fax: 905.827.6402  
canada.inquires@bio-techne.com

### **Bio-Techne Ltd**

19 Barton Lane  
Abingdon Science Park  
Abingdon, OX14 3NB, United Kingdom  
Phone: (44) (0) 1235 529449  
Free Phone: 0800 37 34 15  
Fax: (44) (0) 1235 533420  
info.EMEA@bio-techne.com

### **General Contact Information**

www.novusbio.com  
Technical Support: nb-technical@bio-techne.com  
Orders: nb-customerservice@bio-techne.com  
General: novus@novusbio.com

### **Products Related to NBP2-52661PE**

---

NBP2-38730PEP	CD25/IL-2R alpha Recombinant Protein Antigen
210-TA-005	TNF-alpha [Unconjugated]
DR2A00	CD25/IL-2R alpha [HRP]
M6000B-1	IL-6 [HRP]

---

### **Limitations**

This product is for research use only and is not approved for use in humans or in clinical diagnosis. Primary Antibodies are guaranteed for 1 year from date of receipt.

For more information on our 100% guarantee, please visit [www.novusbio.com/guarantee](http://www.novusbio.com/guarantee)

Earn gift cards/discounts by submitting a review: [www.novusbio.com/reviews/submit/NBP2-52661PE](http://www.novusbio.com/reviews/submit/NBP2-52661PE)

Earn gift cards/discounts by submitting a publication using this product:  
[www.novusbio.com/publications](http://www.novusbio.com/publications)

