

# Product Datasheet

## CD25/IL-2R alpha Antibody (Basiliximab) - Chimeric - Azide and BSA Free NBP2-52661-0.2mg

Unit Size: 0.2 mg

Store at 4C for up to 3 months. For longer storage, aliquot and store at -20C.

[www.novusbio.com](http://www.novusbio.com)



[technical@novusbio.com](mailto:technical@novusbio.com)

Protocols, Publications, Related Products, Reviews, Research Tools and Images at:  
[www.novusbio.com/NBP2-52661](http://www.novusbio.com/NBP2-52661)

Updated 10/23/2024 v.20.1

Earn rewards for product  
reviews and publications.

Submit a publication at [www.novusbio.com/publications](http://www.novusbio.com/publications)

Submit a review at [www.novusbio.com/reviews/destination/NBP2-52661](http://www.novusbio.com/reviews/destination/NBP2-52661)



**NBP2-52661-0.2mg**

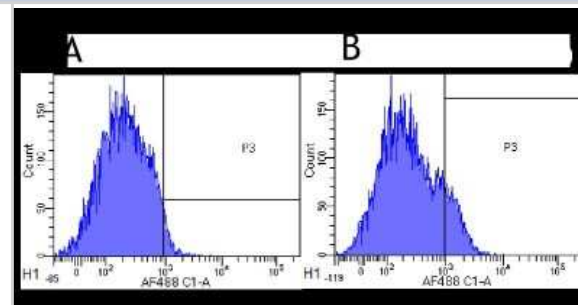
CD25/IL-2R alpha Antibody (Basiliximab) - Chimeric - Azide and BSA Free

| <b>Product Information</b>         |   |
|------------------------------------|---|
| <b>Unit Size</b>                   | 0.2 mg  |
| <b>Concentration</b>               | 1 mg/ml   |
| <b>Storage</b>                     | Store at 4C for up to 3 months. For longer storage, aliquot and store at -20C.  |
| <b>Clonality</b>                   | Monoclonal  |
| <b>Clone</b>                       | Basiliximab   |
| <b>Preservative</b>                | 0.02% Proclin 300   |
| <b>Isotype</b>                     | IgG Kappa   |
| <b>Purity</b>                      | Protein A purified  |
| <b>Buffer</b>                      | PBS   |
| <b>Product Description</b>         |   |
| <b>Host</b>                        | Rabbit  |
| <b>Gene ID</b>                     | 3559  |
| <b>Gene Symbol</b>                 | IL2RA   |
| <b>Species</b>                     | Human, Cynomolgus Monkey, Rhesus Macaque  |
| <b>Specificity/Sensitivity</b>     | Basiliximab recognises the human IL-2R and binds to the epitope (116)ERIYHFV (122) within the extracellular domain of the CD25 subunit -binding is abolished when 2 or more residues within the epitope are mutated. This epitope overlaps with the interaction site of CD25 and IL-2. CD25 is found in the high-affinity IL-2R ((alpha)(beta)(gamma)c) -T cells only express CD25 upon activation. IL-2 binding to IL-2R on T cells modulates proliferation and differentiation.   |
| <b>Immunogen</b>                   | Basiliximab was prepared by immunizing BALB/c mice with CTC 16 cells.   |
| <b>Product Application Details</b> |   |
| <b>Applications</b>                | Western Blot, Flow Cytometry, Immunocytochemistry/ Immunofluorescence, Immunohistochemistry, Block/Neutralize, CyTOF-ready  |
| <b>Recommended Dilutions</b>       | Western Blot 1:100 - 1:2000, Flow Cytometry 1:10 - 1:1000, Immunohistochemistry 1:10 - 1:500, Immunocytochemistry/ Immunofluorescence, CyTOF-ready, Block/Neutralize  |
| <b>Application Notes</b>           | This antibody is Cytof ready. This chimeric rabbit antibody was made using the variable domain sequences of the original Human IgG1 format, for improved compatibility with existing reagents, assays and techniques. Basiliximab is derived from the murine anti-Tac antibody. For the clinically used format, the variable regions from this antibody were grafted onto the sequence of the human IgG1 kappa constant regions. Basiliximab binding to CD25 competitively blocks the interaction of IL-2R with its ligand IL-2 on the surface of T cells. Blocking this interaction prevents T cell replication and T cell-mediated B cell activation. Basiliximab binding suppresses the immune system and inhibits the pathway activating the cellular immune response to allograft rejection. IL-2 signalling suppression can additionally prevent acute graft-versus-host disease, autoimmune disorders and malignancies such as T cell leukemias (Binder et al, 2007). Basiliximab has also been used in FC, IF, IHC and WB studies, which enables the detection of CD25. |

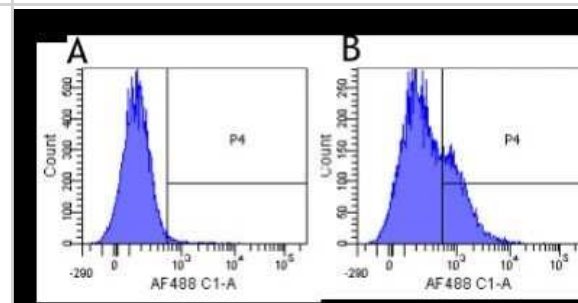


## Images

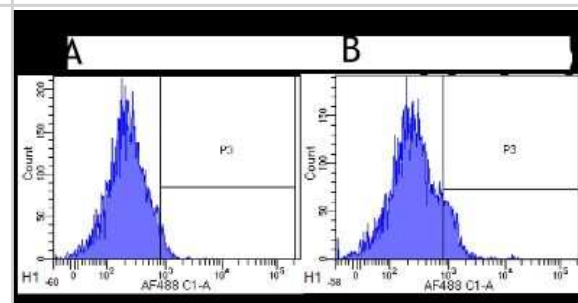
Flow Cytometry: CD25/IL-2R alpha Antibody (Basiliximab) - Chimeric [NBP2-52661] - Flow-cytometry using anti-CD25 antibody Basiliximab (NBP2-52661) Cynomolgus monkey lymphocytes were stained with an isotype control (panel A) or the rabbit-chimeric version of Basiliximab (panel B) at a concentration of 1 ug/ml for 30 mins at RT. After washing, bound antibody was detected using a AF488 conjugated donkey anti-rabbit antibody and cells analysed on a FACSCanto flow-cytometer.



Flow Cytometry: CD25/IL-2R alpha Antibody (Basiliximab) - Chimeric [NBP2-52661] - Flow-cytometry using the anti-CD25 (IL2R) research biosimilar antibody Basiliximab. Human lymphocytes were stained with an isotype control (panel A) or the rabbit-chimeric version of Basiliximab (panel B) at a concentration of 1 ug/ml for 30 mins at RT. After washing, bound antibody was detected using a AF488 conjugated donkey anti-rabbit antibody and cells analysed on a FACSCanto flow-cytometer.



Flow Cytometry: CD25/IL-2R alpha Antibody (Basiliximab) - Chimeric [NBP2-52661] - Flow-cytometry using anti-CD25 antibody Basiliximab (NBP2-52661) Rhesus monkey lymphocytes were stained with an isotype control (panel A) or the rabbit-chimeric version of Basiliximab (panel B) at a concentration of 1 ug/ml for 30 mins at RT. After washing, bound antibody was detected using a AF488 conjugated donkey anti-rabbit antibody and cells analysed on a FACSCanto flow-cytometer.





### **Novus Biologicals USA**

10730 E. Briarwood Avenue  
Centennial, CO 80112  
USA  
Phone: 303.730.1950  
Toll Free: 1.888.506.6887  
Fax: 303.730.1966  
nb-customerservice@bio-techne.com

### **Bio-Techne Canada**

21 Canmotor Ave  
Toronto, ON M8Z 4E6  
Canada  
Phone: 905.827.6400  
Toll Free: 855.668.8722  
Fax: 905.827.6402  
canada.inquires@bio-techne.com

### **Bio-Techne Ltd**

19 Barton Lane  
Abingdon Science Park  
Abingdon, OX14 3NB, United Kingdom  
Phone: (44) (0) 1235 529449  
Free Phone: 0800 37 34 15  
Fax: (44) (0) 1235 533420  
info.EMEA@bio-techne.com

### **General Contact Information**

www.novusbio.com  
Technical Support: nb-technical@bio-techne.com  
Orders: nb-customerservice@bio-techne.com  
General: novus@novusbio.com

### **Products Related to NBP2-52661-0.2mg**

---

|               |   |
|---------------|---|
| HAF008        | Goat anti-Rabbit IgG Secondary Antibody [HRP]       |
| NB7160        | Goat anti-Rabbit IgG (H+L) Secondary Antibody [HRP] |
| NBP2-38730PEP | CD25/IL-2R alpha Recombinant Protein Antigen        |
| 210-TA-005    | TNF-alpha [Unconjugated]                            |

---

### **Limitations**

This product is for research use only and is not approved for use in humans or in clinical diagnosis. Primary Antibodies are guaranteed for 1 year from date of receipt.

For more information on our 100% guarantee, please visit [www.novusbio.com/guarantee](http://www.novusbio.com/guarantee)

Earn gift cards/discounts by submitting a review: [www.novusbio.com/reviews/submit/NBP2-52661](http://www.novusbio.com/reviews/submit/NBP2-52661)

Earn gift cards/discounts by submitting a publication using this product:  
[www.novusbio.com/publications](http://www.novusbio.com/publications)

