

# Product Datasheet

## **CD20 Antibody (10F381 (rituximab)) - Chimeric - Azide and BSA Free NBP2-52646-0.2mg**

Unit Size: 0.2 mg

Store at 4C for up to 3 months. For longer storage, aliquot and store at -20C.

[www.novusbio.com](http://www.novusbio.com)



[technical@novusbio.com](mailto:technical@novusbio.com)

Protocols, Publications, Related Products, Reviews, Research Tools and Images at:  
[www.novusbio.com/NBP2-52646](http://www.novusbio.com/NBP2-52646)

Updated 10/23/2024 v.20.1

Earn rewards for product  
reviews and publications.

Submit a publication at [www.novusbio.com/publications](http://www.novusbio.com/publications)

Submit a review at [www.novusbio.com/reviews/destination/NBP2-52646](http://www.novusbio.com/reviews/destination/NBP2-52646)



**NBP2-52646-0.2mg**

CD20 Antibody (10F381 (rituximab)) - Chimeric - Azide and BSA Free

Product Information	
Unit Size	0.2 mg
Concentration	1 mg/ml
Storage	Store at 4C for up to 3 months. For longer storage, aliquot and store at -20C.
Clonality	Monoclonal
Clone	10F381 (rituximab)
Preservative	0.02% Proclin 300
Isotype	IgG Kappa
Purity	Protein A purified
Buffer	PBS

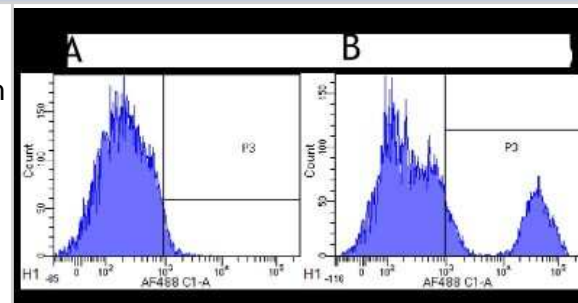
Product Description	
Host	Rabbit
Gene ID	931
Gene Symbol	MS4A1
Species	Human, Cynomolgus Monkey, Rhesus Macaque
Specificity/Sensitivity	CD20 (Human B-lymphocyte-restricted differentiation antigen, Bp35), is a hydrophobic transmembrane protein with a molecular weight of approximately 35 kDa located on pre-B and mature B lymphocytes, and most B-cell non-Hodgkin's lymphomas, but is not found on stem cells, pro-B cells, normal plasma cells or other normal tissues .
Immunogen	Human lymphoblastoid cell line SB.

Product Application Details	
Applications	Flow Cytometry, CyTOF-ready
Recommended Dilutions	Flow Cytometry 1:10 - 1:1000, CyTOF-ready
Application Notes	This antibody is Cytof ready. This chimeric rabbit antibody was made using the variable domain sequences of the original Human IgG1 format, for improved compatibility with existing reagents, assays and techniques.

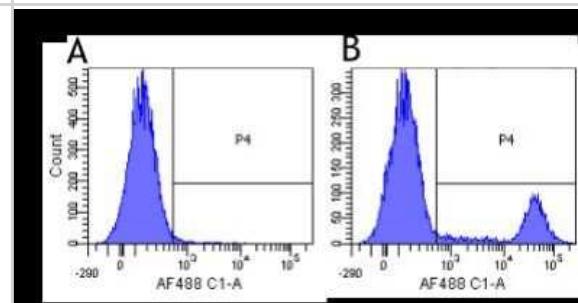


## Images

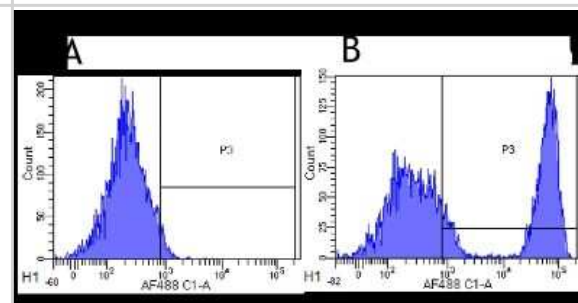
Flow Cytometry: CD20 Antibody (10F381 (rituximab)) - Chimeric [NBP2-52646] - Flow-cytometry using the anti-CD20 research biosimilar antibody Rituximab. Cynomolgus monkey lymphocytes were stained with an isotype control (panel A) or the rabbit-chimeric version of Rituximab (NBP2-52646, panel B) at a concentration of 1 ug/ml for 30 mins at RT. After washing, bound antibody was detected using a AF488 conjugated donkey anti-rabbit antibody and cells analysed on a FACSCanto flow-cytometer.



Flow Cytometry: CD20 Antibody (10F381 (rituximab)) - Chimeric [NBP2-52646] - Flow-cytometry using the anti-CD20 research biosimilar antibody Rituximab. Human lymphocytes were stained with an isotype control (panel A) or the rabbit-chimeric version of Rituximab (NBP2-52646, panel B) at a concentration of 1 ug/ml for 30 mins at RT. After washing, bound antibody was detected using a AF488 conjugated donkey anti-rabbit antibody and cells analysed on a FACSCanto flow-cytometer.



Flow Cytometry: CD20 Antibody (10F381 (rituximab)) - Chimeric [NBP2-52646] - Flow-cytometry using the anti-CD20 research biosimilar antibody Rituximab. Rhesus monkey lymphocytes were stained with an isotype control (panel A) or the rabbit-chimeric version of Rituximab (NBP2-52646, panel B) at a concentration of 1 ug/ml for 30 mins at RT. After washing, bound antibody was detected using a AF488 conjugated donkey anti-rabbit antibody and cells analysed on a FACSCanto flow-cytometer.



**Novus Biologicals USA**

10730 E. Briarwood Avenue  
Centennial, CO 80112  
USA  
Phone: 303.730.1950  
Toll Free: 1.888.506.6887  
Fax: 303.730.1966  
nb-customerservice@bio-techne.com

**Bio-Techne Canada**

21 Canmotor Ave  
Toronto, ON M8Z 4E6  
Canada  
Phone: 905.827.6400  
Toll Free: 855.668.8722  
Fax: 905.827.6402  
canada.inquires@bio-techne.com

**Bio-Techne Ltd**

19 Barton Lane  
Abingdon Science Park  
Abingdon, OX14 3NB, United Kingdom  
Phone: (44) (0) 1235 529449  
Free Phone: 0800 37 34 15  
Fax: (44) (0) 1235 533420  
info.EMEA@bio-techne.com

**General Contact Information**

[www.novusbio.com](http://www.novusbio.com)  
Technical Support: nb-technical@bio-techne.com  
Orders: nb-customerservice@bio-techne.com  
General: novus@novusbio.com

**Products Related to NBP2-52646-0.2mg**

---

HAF008	Goat anti-Rabbit IgG Secondary Antibody [HRP]
NB7160	Goat anti-Rabbit IgG (H+L) Secondary Antibody [HRP]
H00000931-P01-25ug	Recombinant Human CD20 GST (N-Term) Protein
210-TA-005	TNF-alpha [Unconjugated]

---

**Limitations**

This product is for research use only and is not approved for use in humans or in clinical diagnosis. Primary Antibodies are guaranteed for 1 year from date of receipt.

For more information on our 100% guarantee, please visit [www.novusbio.com/guarantee](http://www.novusbio.com/guarantee)

Earn gift cards/discounts by submitting a review: [www.novusbio.com/reviews/submit/NBP2-52646](http://www.novusbio.com/reviews/submit/NBP2-52646)

Earn gift cards/discounts by submitting a publication using this product:  
[www.novusbio.com/publications](http://www.novusbio.com/publications)

