

# Product Datasheet

## Recombinant Human Glutamine Synthetase Protein NBP2-52376-0.02mg

Unit Size: 0.02 mg

Store at 4C short term. Aliquot and store at -20C long term. Avoid freeze-thaw cycles.

[www.novusbio.com](http://www.novusbio.com)



[technical@novusbio.com](mailto:technical@novusbio.com)

### Publications: 1

Protocols, Publications, Related Products, Reviews, Research Tools and Images at:  
[www.novusbio.com/NBP2-52376](http://www.novusbio.com/NBP2-52376)

Updated 10/23/2024 v.20.1

Earn rewards for product  
reviews and publications.

Submit a publication at [www.novusbio.com/publications](http://www.novusbio.com/publications)

Submit a review at [www.novusbio.com/reviews/destination/NBP2-52376](http://www.novusbio.com/reviews/destination/NBP2-52376)



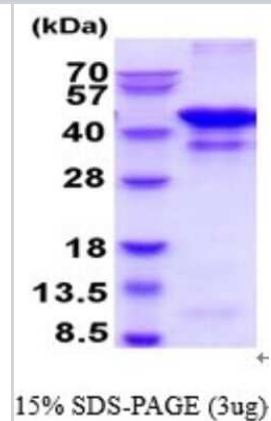
**NBP2-52376-0.02mg**

## Recombinant Human Glutamine Synthetase Protein

Product Information	
Unit Size	0.02 mg
Concentration	1 mg/ml
Storage	Store at 4C short term. Aliquot and store at -20C long term. Avoid freeze-thaw cycles.
Preservative	No Preservative
Purity	>85%, by SDS-PAGE
Buffer	20 mM Tris-HCl buffer (pH8.0), 10% glycerol, 1 mM DTT, 0.1 mM PMSF
Target Molecular Weight	42 kDa
Product Description	
Description	<p>An un-tagged recombinant protein corresponding to the amino acids 1-373 of Human Glutamine Synthetase</p> <p><b>Source:</b> <i>E.coli</i></p> <p><b>Amino Acid Sequence:</b> MTTSSASSHLN KGIKQVYMSL PQGEKVQAMY IWIDGTGEGEGL RCKTRTL DSE PKCVEELPEW NFDGSSTLQS EGSNSDMYLV PAAMFRDPFR KDPNKLVLCE VFYNNRRPAE TNLRHTCKRI MDMVSNQHPW FGMEQEYTLM GTDGHPFGWP SNGFPGPQGP YYCGVGADRA YGRDIVEAHY RACLYAGVKI AGTNAEVMPA QWEFQIGPCE GISMGDHLWV ARFILHRVCE DFGVIATFDP KPIPGNWNKA GCHTNFSTKA MREENGLKYI EEAIKLSKR HQYHIRAYDP KGGLDNARRL TGFHETSNIN DFSAGVANRS ASIRIPRTVG QEKKG YFEDR RPSANCDPFS VTEALIRTCL LNETGDEPFQ YKN</p>
Gene ID	2752
Gene Symbol	GLUL
Species	Human
Details of Functionality	Specific activity is > 2.000 pmol/min/ug, and is defined as the amount of enzyme that convert L-glutamate to L-glutamine per miunte at pH 7.5 at 37C in coupled system with PK/LDH.
Product Application Details	
Applications	SDS-Page, Enzyme Activity
Recommended Dilutions	SDS-Page, Enzyme Activity

## Images

SDS-Page: Recombinant Human Glutamine Synthetase Protein [NBP2-52376] - 15% SDS Page (3 ug)



## Publications

Villar VH, Allega MF, Deshmukh R et al. Hepatic glutamine synthetase controls N5-methylglutamine in homeostasis and cancer *Nature chemical biology* 2022-10-24 [PMID: 36280791] (EnzAct)



### **Novus Biologicals USA**

10730 E. Briarwood Avenue  
Centennial, CO 80112  
USA  
Phone: 303.730.1950  
Toll Free: 1.888.506.6887  
Fax: 303.730.1966  
nb-customerservice@bio-techne.com

### **Bio-Techne Canada**

21 Canmotor Ave  
Toronto, ON M8Z 4E6  
Canada  
Phone: 905.827.6400  
Toll Free: 855.668.8722  
Fax: 905.827.6402  
canada.inquires@bio-techne.com

### **Bio-Techne Ltd**

19 Barton Lane  
Abingdon Science Park  
Abingdon, OX14 3NB, United Kingdom  
Phone: (44) (0) 1235 529449  
Free Phone: 0800 37 34 15  
Fax: (44) (0) 1235 533420  
info.EMEA@bio-techne.com

### **General Contact Information**

www.novusbio.com  
Technical Support: nb-technical@bio-techne.com  
Orders: nb-customerservice@bio-techne.com  
General: novus@novusbio.com

### **Products Related to NBP2-52376-0.02mg**

---

NBP2-52619	Recombinant Human Glutamine Synthetase His Protein
NB300-109	Tyrosine Hydroxylase Antibody
NB110-41404	Glutamine Synthetase Antibody
NB300-141	GFAP Antibody

---

### **Limitations**

This product is for research use only and is not approved for use in humans or in clinical diagnosis. Peptides and proteins are guaranteed for 3 months from date of receipt.

For more information on our 100% guarantee, please visit [www.novusbio.com/guarantee](http://www.novusbio.com/guarantee)

Earn gift cards/discounts by submitting a review: [www.novusbio.com/reviews/submit/NBP2-52376](http://www.novusbio.com/reviews/submit/NBP2-52376)

Earn gift cards/discounts by submitting a publication using this product:  
[www.novusbio.com/publications](http://www.novusbio.com/publications)

