

# Product Datasheet

## ERO1L Antibody (V23P3C9\*H2) - BSA Free NBP2-50388

Unit Size: 0.1 ml

Store at 4C short term. Aliquot and store at -20C long term. Avoid freeze-thaw cycles.

[www.novusbio.com](http://www.novusbio.com)



[technical@novusbio.com](mailto:technical@novusbio.com)

Protocols, Publications, Related Products, Reviews, Research Tools and Images at:  
[www.novusbio.com/NBP2-50388](http://www.novusbio.com/NBP2-50388)

Updated 10/23/2024 v.20.1

Earn rewards for product  
reviews and publications.

Submit a publication at [www.novusbio.com/publications](http://www.novusbio.com/publications)

Submit a review at [www.novusbio.com/reviews/destination/NBP2-50388](http://www.novusbio.com/reviews/destination/NBP2-50388)



**NBP2-50388**

ERO1L Antibody (V23P3C9\*H2) - BSA Free

**Product Information**

<b>Unit Size</b>	0.1 ml
<b>Concentration</b>	1 mg/ml
<b>Storage</b>	Store at 4C short term. Aliquot and store at -20C long term. Avoid freeze-thaw cycles.
<b>Clonality</b>	Monoclonal
<b>Clone</b>	V23P3C9*H2
<b>Preservative</b>	0.02% Sodium Azide
<b>Isotype</b>	IgG1 Kappa
<b>Purity</b>	Protein A purified
<b>Buffer</b>	PBS

**Product Description**

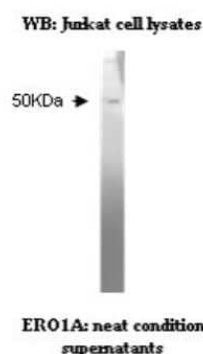
<b>Host</b>	Mouse
<b>Gene ID</b>	30001
<b>Gene Symbol</b>	ERO1A
<b>Species</b>	Human, Mouse, Rat, Porcine, Canine, Equine, Sheep
<b>Immunogen</b>	Peptide Sequence - KLIANMPESG (peptide immunogen is identical in rat ( <i>Rattus norvegicus</i> ), mouse ( <i>Mus musculus</i> ), sheep ( <i>Ovis aries</i> ), bovine ( <i>Bos taurus</i> ), canine ( <i>Canis familiaris</i> ), porcine ( <i>Sus scrofa</i> ) and equine ( <i>Equus caballus</i> ))

**Product Application Details**

<b>Applications</b>	Western Blot, ELISA, Immunohistochemistry
<b>Recommended Dilutions</b>	Western Blot 1:100 - 1:2000, ELISA 1:100 - 1:2000, Immunohistochemistry 1:10 - 1:500
<b>Application Notes</b>	Positive control(s): ELISA - Peptide immunogen; WB - Jurkat whole cell lysate; IHC - formalin-fixed, paraffin-embedded multi tumour tissue microarray.

**Images**

Western Blot: ERO1L Antibody (V23P3C9-H2) [NBP2-50388] - Analysis of ERO1L in Jurkat cell lysate.





### **Novus Biologicals USA**

10730 E. Briarwood Avenue  
Centennial, CO 80112  
USA  
Phone: 303.730.1950  
Toll Free: 1.888.506.6887  
Fax: 303.730.1966  
nb-customerservice@bio-techne.com

### **Bio-Techne Canada**

21 Canmotor Ave  
Toronto, ON M8Z 4E6  
Canada  
Phone: 905.827.6400  
Toll Free: 855.668.8722  
Fax: 905.827.6402  
canada.inquires@bio-techne.com

### **Bio-Techne Ltd**

19 Barton Lane  
Abingdon Science Park  
Abingdon, OX14 3NB, United Kingdom  
Phone: (44) (0) 1235 529449  
Free Phone: 0800 37 34 15  
Fax: (44) (0) 1235 533420  
info.EMEA@bio-techne.com

### **General Contact Information**

[www.novusbio.com](http://www.novusbio.com)  
Technical Support: nb-technical@bio-techne.com  
Orders: nb-customerservice@bio-techne.com  
General: novus@novusbio.com

### **Products Related to NBP2-50388**

---

HAF007	Goat anti-Mouse IgG Secondary Antibody [HRP]
NB720-B	Rabbit anti-Mouse IgG (H+L) Secondary Antibody [Biotin]
NBP1-43319-0.5mg	Mouse IgG1 Kappa Isotype Control (P3.6.2.8.1)
NBP2-51682-0.1mg	Recombinant Human ERO1L His Protein

---

### **Limitations**

This product is for research use only and is not approved for use in humans or in clinical diagnosis. Primary Antibodies are guaranteed for 1 year from date of receipt.

For more information on our 100% guarantee, please visit [www.novusbio.com/guarantee](http://www.novusbio.com/guarantee)

Earn gift cards/discounts by submitting a review: [www.novusbio.com/reviews/submit/NBP2-50388](http://www.novusbio.com/reviews/submit/NBP2-50388)

Earn gift cards/discounts by submitting a publication using this product:  
[www.novusbio.com/publications](http://www.novusbio.com/publications)

