

Product Datasheet

CTLA-4 Antibody (L4P2F5*F10) - BSA Free NBP2-50286

Unit Size: 0.1 ml

Store at 4C short term. Aliquot and store at -20C long term. Avoid freeze-thaw cycles.

www.novusbio.com



technical@novusbio.com

Protocols, Publications, Related Products, Reviews, Research Tools and Images at:
www.novusbio.com/NBP2-50286

Updated 10/23/2024 v.20.1

Earn rewards for product
reviews and publications.

Submit a publication at www.novusbio.com/publications

Submit a review at www.novusbio.com/reviews/destination/NBP2-50286



NBP2-50286

CTLA-4 Antibody (L4P2F5*F10) - BSA Free

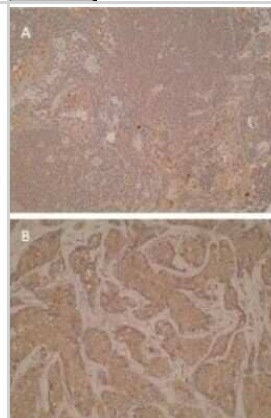
Product Information	
Unit Size	0.1 ml
Concentration	1 mg/ml
Storage	Store at 4C short term. Aliquot and store at -20C long term. Avoid freeze-thaw cycles.
Clonality	Monoclonal
Clone	L4P2F5*F10
Preservative	0.02% Sodium Azide
Isotype	IgG1 Kappa
Purity	Protein A purified
Buffer	PBS
Product Description	
Description	The clone number is listed as L4P2F5*F10 in the scientific literature.
Host	Mouse
Gene ID	1493
Gene Symbol	CTLA4
Species	Human, Mouse, Rat, Bovine
Immunogen	Ovalbumin-conjugated synthetic peptide CENAPNRARM
Product Application Details	
Applications	Western Blot, ELISA, Immunohistochemistry, Immunohistochemistry-Paraffin
Recommended Dilutions	Western Blot 1:100 - 1:2000, ELISA 1:100 - 1:2000, Immunohistochemistry 1:10 - 1:500, Immunohistochemistry-Paraffin
Application Notes	Positive control(s): IHC- formalin-fixed, paraffin-embedded multi tumour tissue microarray; WB - Jurkat cell lysates.

Images

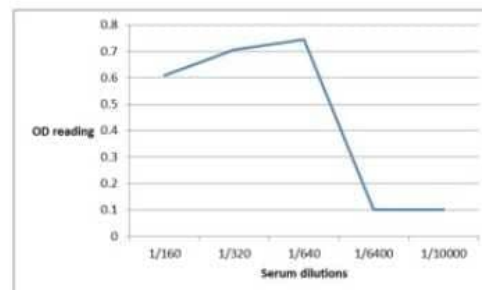
Western Blot: CTLA-4 Antibody (L4P2F5*F10) [NBP2-50286] - Analysis of CTLA-4 in Jurkat cell lysates. Two products are detected, slightly larger than anticipated-possibly due to glycosylation.



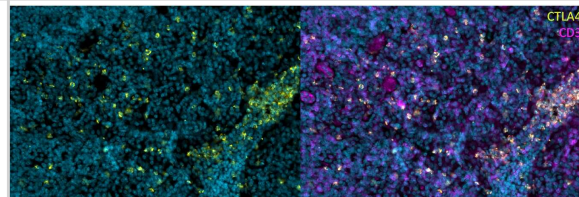
Immunohistochemistry-Paraffin: CTLA-4 Antibody (L4P2F5*F10) [NBP2-50286] - Human lymph node cross section. Cytoplasmic staining is shown as expected (CTLA4 is expressed in T-cells). B. Positive cytoplasmic staining was also detected in human breast cancer sections.



ELISA: CTLA-4 Antibody (L4P2F5*F10) [NBP2-50286] - Detection of soluble CTLA4 in mouse serum by indirect ELISA.



Immunohistochemistry-Paraffin: Mouse Monoclonal CTLA-4 Antibody (L4P2F5*F10) [NBP2-50286] - CTLA-4 was stained in human tonsil FFPE tissue. HIER antigen retrieval at pH 9 for 20min. Antibody was used in concentrations between 1:50-100. AF750 conjugated version of antibody was used (Catalog # NBP2-50286AF750). Image from a verified customer review.





Novus Biologicals USA

10730 E. Briarwood Avenue
Centennial, CO 80112
USA
Phone: 303.730.1950
Toll Free: 1.888.506.6887
Fax: 303.730.1966
nb-customerservice@bio-techne.com

Bio-Techne Canada

21 Canmotor Ave
Toronto, ON M8Z 4E6
Canada
Phone: 905.827.6400
Toll Free: 855.668.8722
Fax: 905.827.6402
canada.inquires@bio-techne.com

Bio-Techne Ltd

19 Barton Lane
Abingdon Science Park
Abingdon, OX14 3NB, United Kingdom
Phone: (44) (0) 1235 529449
Free Phone: 0800 37 34 15
Fax: (44) (0) 1235 533420
info.EMEA@bio-techne.com

General Contact Information

www.novusbio.com
Technical Support: nb-technical@bio-techne.com
Orders: nb-customerservice@bio-techne.com
General: novus@novusbio.com

Products Related to NBP2-50286

HAF007	Goat anti-Mouse IgG Secondary Antibody [HRP]
NB720-B	Rabbit anti-Mouse IgG (H+L) Secondary Antibody [Biotin]
NBP1-43319-0.5mg	Mouse IgG1 Kappa Isotype Control (P3.6.2.8.1)
NBP2-22987	Recombinant Human CTLA-4 His Protein

Limitations

This product is for research use only and is not approved for use in humans or in clinical diagnosis. Primary Antibodies are guaranteed for 1 year from date of receipt.

For more information on our 100% guarantee, please visit www.novusbio.com/guarantee

Earn gift cards/discounts by submitting a review: www.novusbio.com/reviews/submit/NBP2-50286

Earn gift cards/discounts by submitting a publication using this product:
www.novusbio.com/publications

