

# Product Datasheet

## CYP26C1 Antibody (T6P1C7\*E7) - BSA Free NBP2-50196

Unit Size: 0.1 ml

Store at 4C short term. Aliquot and store at -20C long term. Avoid freeze-thaw cycles.

[www.novusbio.com](http://www.novusbio.com)



[technical@novusbio.com](mailto:technical@novusbio.com)

Protocols, Publications, Related Products, Reviews, Research Tools and Images at:  
[www.novusbio.com/NBP2-50196](http://www.novusbio.com/NBP2-50196)

Updated 10/23/2024 v.20.1

Earn rewards for product  
reviews and publications.

Submit a publication at [www.novusbio.com/publications](http://www.novusbio.com/publications)

Submit a review at [www.novusbio.com/reviews/destination/NBP2-50196](http://www.novusbio.com/reviews/destination/NBP2-50196)



**NBP2-50196**

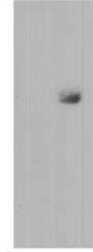
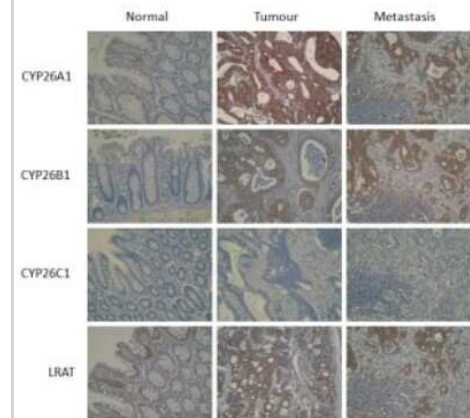
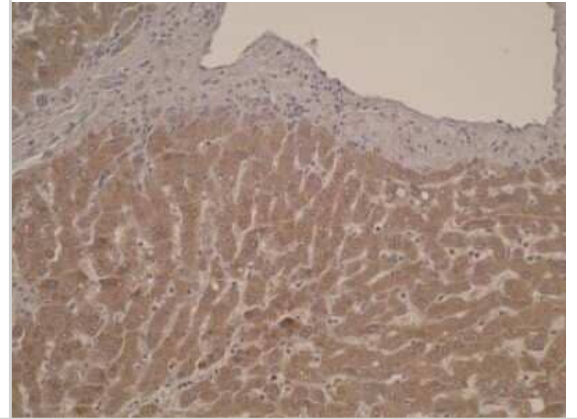
CYP26C1 Antibody (T6P1C7\*E7) - BSA Free

<b>Product Information</b>	
<b>Unit Size</b>	0.1 ml
<b>Concentration</b>	1 mg/ml
<b>Storage</b>	Store at 4C short term. Aliquot and store at -20C long term. Avoid freeze-thaw cycles.
<b>Clonality</b>	Monoclonal
<b>Clone</b>	T6P1C7*E7
<b>Preservative</b>	0.02% Sodium Azide
<b>Isotype</b>	IgG1 Kappa
<b>Purity</b>	Protein A purified
<b>Buffer</b>	PBS
<b>Product Description</b>	
<b>Description</b>	The clone number is listed as T6P1C7*E7 in the scientific literature.
<b>Host</b>	Mouse
<b>Gene ID</b>	340665
<b>Gene Symbol</b>	CYP26C1
<b>Species</b>	Human, Mouse, Rat
<b>Immunogen</b>	Ovalbumin-conjugated synthetic peptide RWELATPAFP (C-terminal sequence)
<b>Product Application Details</b>	
<b>Applications</b>	Western Blot, Immunohistochemistry
<b>Recommended Dilutions</b>	Western Blot 1:100 - 1:2000, Immunohistochemistry 1:10 - 1:500
<b>Application Notes</b>	Positive control(s): IHC: formalin-fixed, paraffin-embedded human liver sections. Western blot: overexpression lysates. The clone number is listed as T6P1C7*E7 in the scientific literature.



**Images**

Western Blot: CYP26C1 Antibody (T6P1C7/E7) [NBP2-50196]

WB: over  
expression  
lysates  
- +CYP26C1: 1/2  
dilutionImmunohistochemistry: CYP26C1 Antibody (T6P1C7-E7) [NBP2-50196]  
- CYP26 IHCsImmunohistochemistry: CYP26C1 Antibody (T6P1C7-E7) [NBP2-50196]  
- Analysis of CYP26C1 in normal liver tissue.



### **Novus Biologicals USA**

10730 E. Briarwood Avenue  
Centennial, CO 80112  
USA  
Phone: 303.730.1950  
Toll Free: 1.888.506.6887  
Fax: 303.730.1966  
nb-customerservice@bio-techne.com

### **Bio-Techne Canada**

21 Canmotor Ave  
Toronto, ON M8Z 4E6  
Canada  
Phone: 905.827.6400  
Toll Free: 855.668.8722  
Fax: 905.827.6402  
canada.inquires@bio-techne.com

### **Bio-Techne Ltd**

19 Barton Lane  
Abingdon Science Park  
Abingdon, OX14 3NB, United Kingdom  
Phone: (44) (0) 1235 529449  
Free Phone: 0800 37 34 15  
Fax: (44) (0) 1235 533420  
info.EMEA@bio-techne.com

### **General Contact Information**

www.novusbio.com  
Technical Support: nb-technical@bio-techne.com  
Orders: nb-customerservice@bio-techne.com  
General: novus@novusbio.com

### **Products Related to NBP2-50196**

---

HAF007	Goat anti-Mouse IgG Secondary Antibody [HRP]
NB720-B	Rabbit anti-Mouse IgG (H+L) Secondary Antibody [Biotin]
NBP1-43319-0.5mg	Mouse IgG1 Kappa Isotype Control (P3.6.2.8.1)
NBP2-04787	CYP26C1 Overexpression Lysate

---

### **Limitations**

This product is for research use only and is not approved for use in humans or in clinical diagnosis. Primary Antibodies are guaranteed for 1 year from date of receipt.

For more information on our 100% guarantee, please visit [www.novusbio.com/guarantee](http://www.novusbio.com/guarantee)

Earn gift cards/discounts by submitting a review: [www.novusbio.com/reviews/submit/NBP2-50196](http://www.novusbio.com/reviews/submit/NBP2-50196)

Earn gift cards/discounts by submitting a publication using this product:  
[www.novusbio.com/publications](http://www.novusbio.com/publications)

