

Product Datasheet

beta Tubulin Antibody (1B12) - BSA Free NBP2-50061

Unit Size: 0.1 ml

Store at 4C short term. Aliquot and store at -20C long term. Avoid freeze-thaw cycles.

www.novusbio.com



technical@novusbio.com

Protocols, Publications, Related Products, Reviews, Research Tools and Images at:
www.novusbio.com/NBP2-50061

Updated 2/23/2025 v.20.1

Earn rewards for product
reviews and publications.

Submit a publication at www.novusbio.com/publications

Submit a review at www.novusbio.com/reviews/destination/NBP2-50061



NBP2-50061

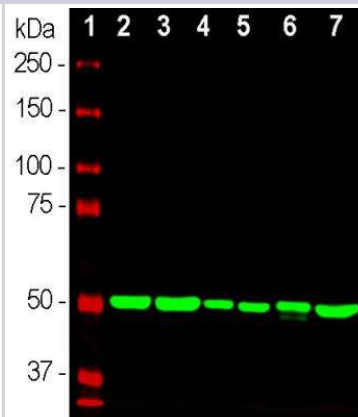
beta Tubulin Antibody (1B12) - BSA Free

Product Information	
Unit Size	0.1 ml
Concentration	1 mg/ml
Storage	Store at 4C short term. Aliquot and store at -20C long term. Avoid freeze-thaw cycles.
Clonality	Monoclonal
Clone	1B12
Preservative	0.035% Sodium Azide
Isotype	IgG2b
Purity	Immunogen affinity purified
Buffer	50% PBS, 50% glycerol
Target Molecular Weight	50 kDa
Product Description	
Host	Mouse
Gene ID	203068
Gene Symbol	TUBB
Species	Human, Mouse, Rat, Monkey
Immunogen	Pig brain beta Tubulin preparation. [UniProt# Q767L7]
Product Application Details	
Applications	Western Blot, Immunocytochemistry/ Immunofluorescence, Single Cell Western
Recommended Dilutions	Western Blot 1:5000 - 1:10000, Immunocytochemistry/ Immunofluorescence 1:5000, Single Cell Western

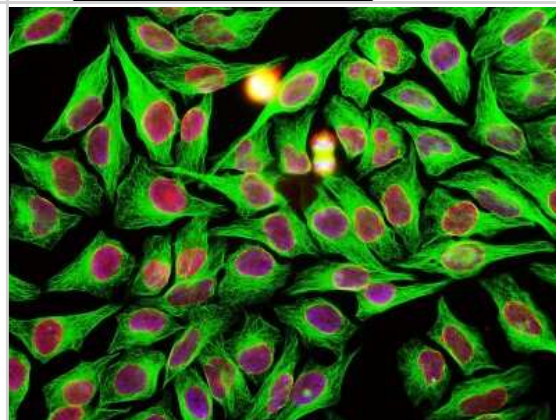


Images

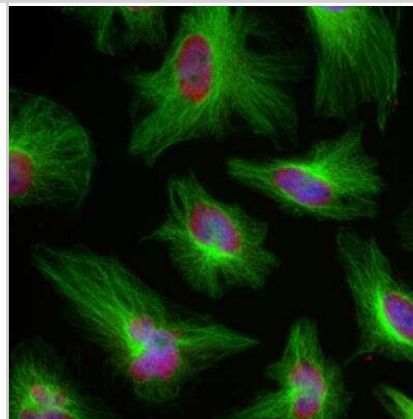
Western Blot: beta Tubulin Antibody (1B12) [NBP2-50061] - Western blot analysis of whole tissue or cell lysates using mouse mAb to Beta-tubulin, NBP2-50061, dilution 1:10,000 in green: [1] protein standard (red), [2] adult rat brain, [3] adult mouse brain, [4] NIH-3T3 cells, [5] HEK293 cells, [6] HeLa cells, [7] SH-SY5Y cells. The strong clean band with apparent SDS-PAGE molecular weight of ~50 kDa corresponds to the Beta-tubulin proteins.



Immunocytochemistry/Immunofluorescence: beta Tubulin Antibody (1B12) [NBP2-50061] - HeLa cells stained with NBP2-50061 in green, and chicken antibody to Lamin A+C in red (NBP2-25152), and DNA in blue. NBP2-50061 reveals strong microtubular staining in the cytoplasm of HeLa cells, while the Lamin A+C localizes in the nuclear membrane.



Immunofluorescence: beta Tubulin Antibody (1B12) [NBP2-50061] - Immunofluorescent analysis of HeLa cells stained with NBP2-50061, dilution 1:5,000 in green, and costained with chicken pAb to the nucleic acid binding protein FOX2, dilution 1:1,000 in red. Blue is DAPI staining of nuclear DNA. NBP2-50061 produces strong staining of microtubules in the cytoplasm, while the FOX2 antibody labels the nuclei of HeLa cells.





Novus Biologicals USA

10730 E. Briarwood Avenue
Centennial, CO 80112
USA
Phone: 303.730.1950
Toll Free: 1.888.506.6887
Fax: 303.730.1966
nb-customerservice@bio-techne.com

Bio-Techne Canada

21 Canmotor Ave
Toronto, ON M8Z 4E6
Canada
Phone: 905.827.6400
Toll Free: 855.668.8722
Fax: 905.827.6402
canada.inquires@bio-techne.com

Bio-Techne Ltd

19 Barton Lane
Abingdon Science Park
Abingdon, OX14 3NB, United Kingdom
Phone: (44) (0) 1235 529449
Free Phone: 0800 37 34 15
Fax: (44) (0) 1235 533420
info.EMEA@bio-techne.com

General Contact Information

www.novusbio.com
Technical Support: nb-technical@bio-techne.com
Orders: nb-customerservice@bio-techne.com
General: novus@novusbio.com

Products Related to NBP2-50061

HAF007	Goat anti-Mouse IgG Secondary Antibody [HRP]
NB720-B	Rabbit anti-Mouse IgG (H+L) Secondary Antibody [Biotin]
NBP2-27231	Mouse IgG2b Isotype Control (MPC-11)
NB600-936PEP	beta Tubulin Antibody Blocking Peptide

Limitations

This product is for research use only and is not approved for use in humans or in clinical diagnosis. Primary Antibodies are guaranteed for 1 year from date of receipt.

For more information on our 100% guarantee, please visit www.novusbio.com/guarantee

Earn gift cards/discounts by submitting a review: www.novusbio.com/reviews/submit/NBP2-50061

Earn gift cards/discounts by submitting a publication using this product:
www.novusbio.com/publications

