

# Product Datasheet

## ALDH1L1 Antibody (4A12) - BSA Free NBP2-50045

Unit Size: 0.1 ml

Store at 4C short term. Aliquot and store at -20C long term. Avoid freeze-thaw cycles.

[www.novusbio.com](http://www.novusbio.com)



[technical@novusbio.com](mailto:technical@novusbio.com)

**Reviews: 1 Publications: 3**

Protocols, Publications, Related Products, Reviews, Research Tools and Images at:  
[www.novusbio.com/NBP2-50045](http://www.novusbio.com/NBP2-50045)

Updated 2/23/2025 v.20.1

**Earn rewards for product  
reviews and publications.**

Submit a publication at [www.novusbio.com/publications](http://www.novusbio.com/publications)

Submit a review at [www.novusbio.com/reviews/destination/NBP2-50045](http://www.novusbio.com/reviews/destination/NBP2-50045)



**NBP2-50045**

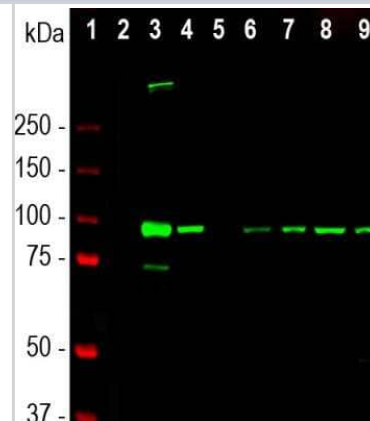
ALDH1L1 Antibody (4A12) - BSA Free

<b>Product Information</b>	
<b>Unit Size</b>	0.1 ml
<b>Concentration</b>	1 mg/ml
<b>Storage</b>	Store at 4C short term. Aliquot and store at -20C long term. Avoid freeze-thaw cycles.
<b>Clonality</b>	Monoclonal
<b>Clone</b>	4A12
<b>Preservative</b>	0.035% Sodium Azide
<b>Isotype</b>	IgG2b
<b>Purity</b>	Immunogen affinity purified
<b>Buffer</b>	50% PBS, 50% glycerol
<b>Target Molecular Weight</b>	100 kDa
<b>Product Description</b>	
<b>Host</b>	Mouse
<b>Gene ID</b>	10840
<b>Gene Symbol</b>	ALDH1L1
<b>Species</b>	Human, Mouse, Rat
<b>Immunogen</b>	Amino acids 1- 401 of human ALDH1L1. [UniProt# O75891]
<b>Product Application Details</b>	
<b>Applications</b>	Western Blot, Immunocytochemistry/ Immunofluorescence, Immunohistochemistry
<b>Recommended Dilutions</b>	Western Blot 1:5000-1:10000, Immunohistochemistry 1:1000-1:2000, Immunocytochemistry/ Immunofluorescence 1:1000-1:2000

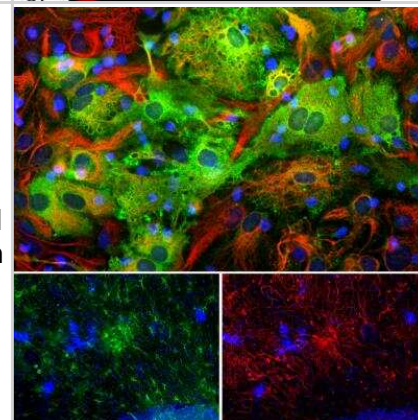


## Images

Western Blot: ALDH1L1 Antibody (4A12) [NBP2-50045] - Analysis of rat and mouse tissue lysates using mouse ALDH1L1 mAb, dilution 1:5000 (Green): [1] protein standard (Red), rat tissue lysates: [2] heart, [3] liver, [4] kidney, [5] lung, [6] brain, and [7] spinal cord; Also mouse tissue lysates: [8] brain, and [9] spinal cord. The band at 100kDa corresponds to ALDH1L1 protein. In line with published work, ALDH1L1 is a major protein of liver and CNS tissue.



Immunocytochemistry/Immunofluorescence: ALDH1L1 Antibody (4A12) [NBP2-50045] - Analysis of mixed cortical neuron-glia cell culture from an E20 rat stained with mouse ALDH1L1 mAb, dilution 1:1,000 (Green), and costained with chicken Vimentin pAb, dilution 1:5000 (Red). DAPI staining of nuclear DNA (Blue). The ALDH1L1 antibody produces strong cytoplasmic staining of astrocytic glial cells, while the Vimentin antibody labels the intermediate filament cytoskeleton in fibroblasts and other glial cells. Some cells, presumably developing astrocytes, are stained by both ALDH1L1 and vimentin and so appear yellow.



## Publications

Marc Oria, Bedika Pathak, Zhen Li, Kenan Bakri, Kara Gouwens, Maria Florencia Varela, Kristin Lampe, Kendall P. Murphy, Chia-Ying Lin, Jose L. Peiro Premature Neural Progenitor Cell Differentiation Into Astrocytes in Retinoic Acid-Induced Spina Bifida Rat Model *Frontiers in Molecular Neuroscience* 2022-06-17 [PMID: 35782393]

Hamilton HL, Kinscherf NA, Balmer G et al. FABP7 drives an inflammatory response in human astrocytes and is upregulated in Alzheimer's disease *GeroScience* 2023-09-09 [PMID: 37688656] (IHC-P, Mouse)

Yoon S, Hong N, Lee M, Ahn J Photobiomodulation with a 660-Nanometer Light-Emitting Diode Promotes Cell Proliferation in Astrocyte Culture Cells 2021-07-02 [PMID: 34359834] (ICC/IF, WB)



### **Novus Biologicals USA**

10730 E. Briarwood Avenue  
Centennial, CO 80112  
USA  
Phone: 303.730.1950  
Toll Free: 1.888.506.6887  
Fax: 303.730.1966  
nb-customerservice@bio-techne.com

### **Bio-Techne Canada**

21 Canmotor Ave  
Toronto, ON M8Z 4E6  
Canada  
Phone: 905.827.6400  
Toll Free: 855.668.8722  
Fax: 905.827.6402  
canada.inquires@bio-techne.com

### **Bio-Techne Ltd**

19 Barton Lane  
Abingdon Science Park  
Abingdon, OX14 3NB, United Kingdom  
Phone: (44) (0) 1235 529449  
Free Phone: 0800 37 34 15  
Fax: (44) (0) 1235 533420  
info.EMEA@bio-techne.com

### **General Contact Information**

www.novusbio.com  
Technical Support: nb-technical@bio-techne.com  
Orders: nb-customerservice@bio-techne.com  
General: novus@novusbio.com

### **Products Related to NBP2-50045**

---

HAF007	Goat anti-Mouse IgG Secondary Antibody [HRP]
NB720-B	Rabbit anti-Mouse IgG (H+L) Secondary Antibody [Biotin]
NBP2-27231	Mouse IgG2b Isotype Control (MPC-11)
H00010840-Q01-10ug	Recombinant Human ALDH1L1 GST (N-Term) Protein

---

### **Limitations**

This product is for research use only and is not approved for use in humans or in clinical diagnosis. Primary Antibodies are guaranteed for 1 year from date of receipt.

For more information on our 100% guarantee, please visit [www.novusbio.com/guarantee](http://www.novusbio.com/guarantee)

Earn gift cards/discounts by submitting a review: [www.novusbio.com/reviews/submit/NBP2-50045](http://www.novusbio.com/reviews/submit/NBP2-50045)

Earn gift cards/discounts by submitting a publication using this product:  
[www.novusbio.com/publications](http://www.novusbio.com/publications)

