

# Product Datasheet

## ALDH1L1 Antibody (2E7) - BSA Free NBP2-50033

Unit Size: 0.1 ml

Store at 4C short term. Aliquot and store at -20C long term. Avoid freeze-thaw cycles.

[www.novusbio.com](http://www.novusbio.com)



[technical@novusbio.com](mailto:technical@novusbio.com)

**Reviews: 1 Publications: 3**

Protocols, Publications, Related Products, Reviews, Research Tools and Images at:  
[www.novusbio.com/NBP2-50033](http://www.novusbio.com/NBP2-50033)

Updated 2/23/2025 v.20.1

**Earn rewards for product  
reviews and publications.**

Submit a publication at [www.novusbio.com/publications](http://www.novusbio.com/publications)

Submit a review at [www.novusbio.com/reviews/destination/NBP2-50033](http://www.novusbio.com/reviews/destination/NBP2-50033)



**NBP2-50033**

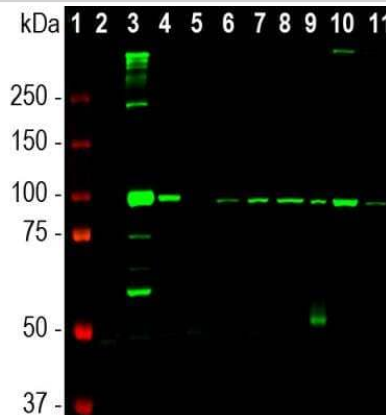
ALDH1L1 Antibody (2E7) - BSA Free

Product Information	
Unit Size	0.1 ml
Concentration	1 mg/ml
Storage	Store at 4C short term. Aliquot and store at -20C long term. Avoid freeze-thaw cycles.
Clonality	Monoclonal
Clone	2E7
Preservative	0.035% Sodium Azide
Isotype	IgG1
Purity	Immunogen affinity purified
Buffer	50% PBS, 50% glycerol
Target Molecular Weight	100 kDa
Product Description	
Host	Mouse
Gene ID	10840
Gene Symbol	ALDH1L1
Species	Human, Mouse, Rat
Immunogen	Amino acids 402-902 of human ALDH1L1. [UniProt# O75891]
Product Application Details	
Applications	Western Blot, Simple Western, Immunocytochemistry/ Immunofluorescence, Immunohistochemistry
Recommended Dilutions	Western Blot 1:5000 - 1:10000, Simple Western 1:20 - 1:250, Immunohistochemistry 1:1000, Immunocytochemistry/ Immunofluorescence 1:1000

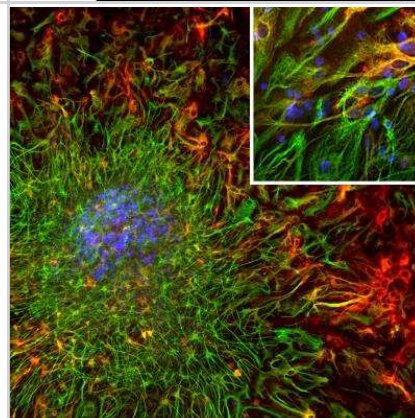


## Images

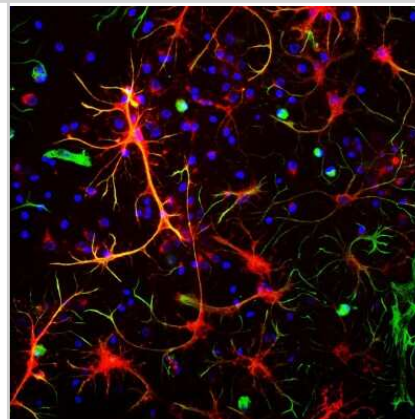
Western Blot: ALDH1L1 Antibody (2E7) [NBP2-50033] - Analysis of different tissue and cell lysates using mouse mAb to ALDH1L1, NBP2-50033, dilution 1:5,000 in green: [1] protein standard (red), rat tissue lysates: [2] heart, [3] liver, [4] kidney, [5] lung, [6] brain, and [7] spinal cord; mouse tissue lysates: [8] brain, and [9] spinal cord; cell lysates: [10] NIH-3T3, and [11] HEK293. The band at 100kDa mark corresponds to ALDH1L1 protein.



Immunocytochemistry/Immunofluorescence: ALDH1L1 Antibody (2E7) [NBP2-50033] - Analysis of cortical neuron-glia cell culture from E20 rat stained with mouse mAb to aldehyde dehydrogenase 1L1 (ALDH1L1), NBP2-50033, dilution 1:1,000 in red, and costained with chicken pAb to GFAP, dilution 1:5,000 in green. The blue is Hoechst staining of nuclear DNA. NBP2-50033 antibody produces cytoplasmic staining of glial cells, while the GFAP antibody labels the intermediate filament cytoskeleton in astrocytes and other glial cells. Some astrocytic cells express both ALDH1L1 and GFAP and appear yellow.



Immunocytochemistry/Immunofluorescence: ALDH1L1 Antibody (2E7) [NBP2-50033] - Neuron-glia cell mixed cultures stained with NBP2-50033 (red) and chicken polyclonal antibody against Vimentin (NB300-223, green). Blue is a DNA stain. NBP2-50033 stains astrocytic cell bodies and processes. The fibroblastic cells contain only Vimentin and so are green, while astrocytes contain either Vimentin and ALDH1L1, so appearing golden, or predominantly ALDH1L1, in which case they appear red.



## Publications

Milstead R, Link C, Xu Z, Hoeffler C Molecular Signaling and Neural Cell Type Expression of Complex Brain Disorders Thesis 1905-07-13 (IHC-FrFI, Mouse)

Milstead R, Link C, Xu Z, Hoeffler C Molecular Signaling and Neural Cell Type Expression of Complex Brain Disorders Thesis Jul 13 1905 12:00AM (IHC-FrFI, Mouse)

Schmitt EC The Role of AKT2 in Astrogliosis & Behavior and Nicotinic Regulation of CYP2A5 Thesis 2021-01-01



### **Novus Biologicals USA**

10730 E. Briarwood Avenue  
Centennial, CO 80112  
USA  
Phone: 303.730.1950  
Toll Free: 1.888.506.6887  
Fax: 303.730.1966  
nb-customerservice@bio-techne.com

### **Bio-Techne Canada**

21 Canmotor Ave  
Toronto, ON M8Z 4E6  
Canada  
Phone: 905.827.6400  
Toll Free: 855.668.8722  
Fax: 905.827.6402  
canada.inquires@bio-techne.com

### **Bio-Techne Ltd**

19 Barton Lane  
Abingdon Science Park  
Abingdon, OX14 3NB, United Kingdom  
Phone: (44) (0) 1235 529449  
Free Phone: 0800 37 34 15  
Fax: (44) (0) 1235 533420  
info.EMEA@bio-techne.com

### **General Contact Information**

www.novusbio.com  
Technical Support: nb-technical@bio-techne.com  
Orders: nb-customerservice@bio-techne.com  
General: novus@novusbio.com

### **Products Related to NBP2-50033**

---

HAF007	Goat anti-Mouse IgG Secondary Antibody [HRP]
NB720-B	Rabbit anti-Mouse IgG (H+L) Secondary Antibody [Biotin]
NBP1-97005-0.5mg	Mouse IgG1 Isotype Control (MG1)
H00010840-Q01-10ug	Recombinant Human ALDH1L1 GST (N-Term) Protein

---

### **Limitations**

This product is for research use only and is not approved for use in humans or in clinical diagnosis. Primary Antibodies are guaranteed for 1 year from date of receipt.

For more information on our 100% guarantee, please visit [www.novusbio.com/guarantee](http://www.novusbio.com/guarantee)

Earn gift cards/discounts by submitting a review: [www.novusbio.com/reviews/submit/NBP2-50033](http://www.novusbio.com/reviews/submit/NBP2-50033)

Earn gift cards/discounts by submitting a publication using this product:  
[www.novusbio.com/publications](http://www.novusbio.com/publications)

