

Product Datasheet

SUMO2 Antibody (SUMO2/1199) - IHC-Prediluted NBP2-48454

Unit Size: 7 ml

Store at 4C.

www.novusbio.com



technical@novusbio.com

Protocols, Publications, Related Products, Reviews, Research Tools and Images at:
www.novusbio.com/NBP2-48454

Updated 10/23/2024 v.20.1

Earn rewards for product
reviews and publications.

Submit a publication at www.novusbio.com/publications

Submit a review at www.novusbio.com/reviews/destination/NBP2-48454



NBP2-48454

SUMO2 Antibody (SUMO2/1199) - IHC-Prediluted

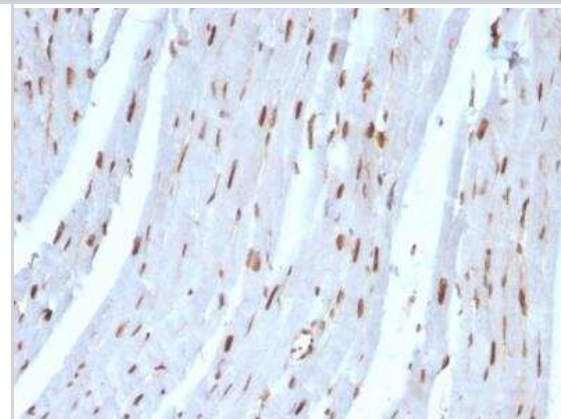
| Product Information | |
|---------------------|---|
| Unit Size | 7 ml |
| Concentration | Please see the vial label for concentration. If unlisted please contact technical services. |
| Storage | Store at 4C. |
| Clonality | Monoclonal |
| Clone | SUMO2/1199 |
| Preservative | 0.05% Sodium Azide |
| Isotype | IgG1 Kappa |
| Purity | Protein A or G purified |
| Buffer | 10 mM PBS with 0.05% BSA |

| Product Description | |
|---------------------|---|
| Description | The prediluted antibody does not require any mixing, dilution, reconstitution, or titration; the antibody is ready-to-use and optimized for staining. |
| Host | Mouse |
| Gene ID | 6613 |
| Gene Symbol | SUMO2 |
| Species | Human, Rat |
| Reactivity Notes | Predicted to show a broad species reactivity. |
| Immunogen | Recombinant human SUMO2 protein (Uniprot: P55854) |

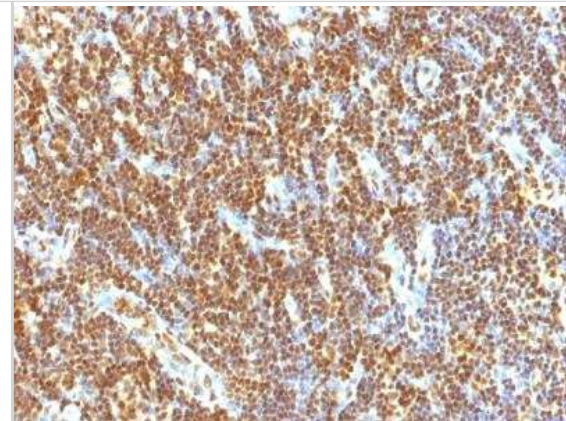
| Product Application Details | |
|-----------------------------|---|
| Applications | Immunohistochemistry, Immunohistochemistry-Paraffin |
| Recommended Dilutions | Immunohistochemistry, Immunohistochemistry-Paraffin |
| Application Notes | Immunohistochemistry (Formalin-fixed): 1-2ug/ml for 30 minutes at RT. Staining of formalin-fixed tissues requires heating tissue sections in 10mM Tris with 1mM EDTA, pH 9.0, for 45 min at 95C followed by cooling at RT for 20 minutes. Optimal dilution for a specific application should be determined. |

Images

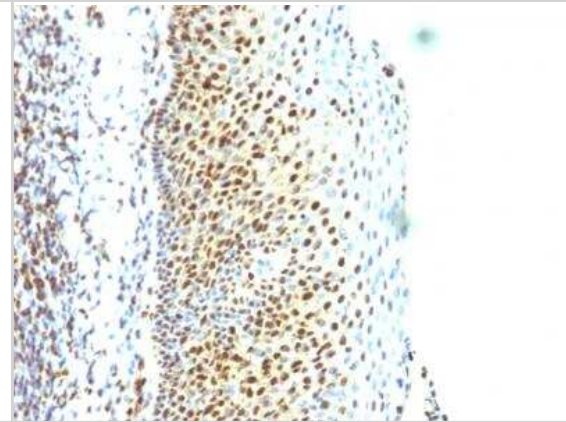
Immunohistochemistry-Paraffin: SUMO2 Antibody (SUMO2/1199) - IHC-Prediluted [NBP2-48454] - Formalin-fixed, paraffin-embedded Rat Heart stained with SUMO-2 MAb (SUMO2/1199)



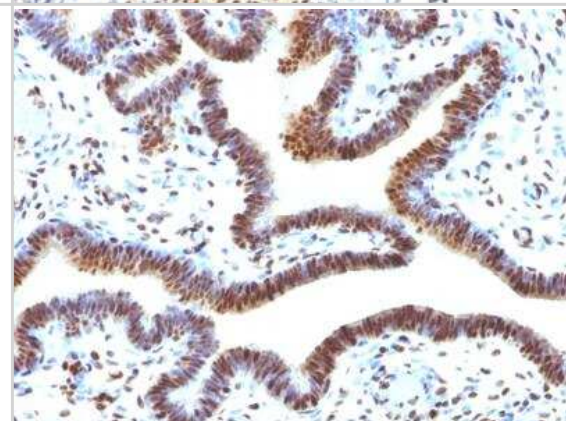
Immunohistochemistry-Paraffin: SUMO2 Antibody (SUMO2/1199) - IHC-Prediluted [NBP2-48454] - Formalin-fixed, paraffin-embedded human Tonsil stained with SUMO-2 Monoclonal Antibody (SUMO2/1199)



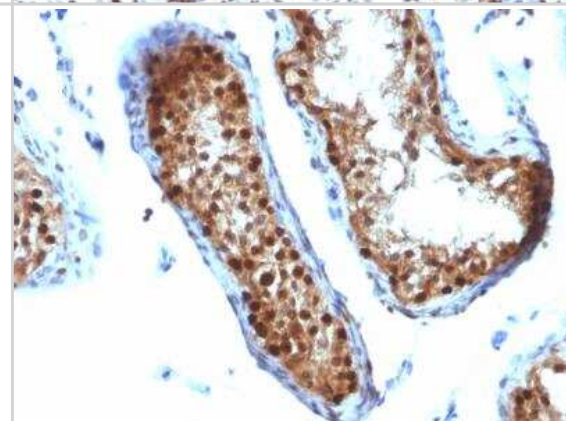
Immunohistochemistry-Paraffin: SUMO2 Antibody (SUMO2/1199) - IHC-Prediluted [NBP2-48454] - Formalin-fixed, paraffin-embedded human Tonsil stained with SUMO-2 Monoclonal Antibody (SUMO2/1199)



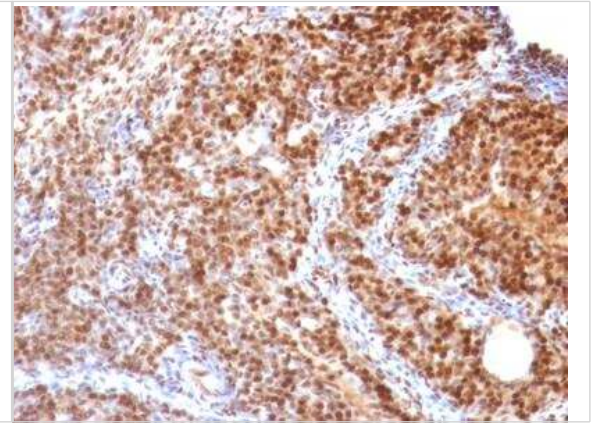
Immunohistochemistry-Paraffin: SUMO2 Antibody (SUMO2/1199) - IHC-Prediluted [NBP2-48454] - Formalin-fixed, paraffin-embedded human Ovarian Carcinoma stained with SUMO-2 Monoclonal Antibody (SUMO2/1199)



Immunohistochemistry-Paraffin: SUMO2 Antibody (SUMO2/1199) - IHC-Prediluted [NBP2-48454] - Formalin-fixed, paraffin-embedded human Ovarian Carcinoma stained with SUMO-2 Monoclonal Antibody (SUMO2/1199)



Immunohistochemistry-Paraffin: SUMO2 Antibody (SUMO2/1199) - IHC-Prediluted [NBP2-48454] - Formalin-fixed, paraffin-embedded Rat Ovary stained with SUMO-2 MAb (SUMO2/1199)





Novus Biologicals USA

10730 E. Briarwood Avenue
Centennial, CO 80112
USA
Phone: 303.730.1950
Toll Free: 1.888.506.6887
Fax: 303.730.1966
nb-customerservice@bio-techne.com

Bio-Techne Canada

21 Canmotor Ave
Toronto, ON M8Z 4E6
Canada
Phone: 905.827.6400
Toll Free: 855.668.8722
Fax: 905.827.6402
canada.inquires@bio-techne.com

Bio-Techne Ltd

19 Barton Lane
Abingdon Science Park
Abingdon, OX14 3NB, United Kingdom
Phone: (44) (0) 1235 529449
Free Phone: 0800 37 34 15
Fax: (44) (0) 1235 533420
info.EMEA@bio-techne.com

General Contact Information

www.novusbio.com
Technical Support: nb-technical@bio-techne.com
Orders: nb-customerservice@bio-techne.com
General: novus@novusbio.com

Products Related to NBP2-48454

| | |
|------------------|---|
| HAF007 | Goat anti-Mouse IgG Secondary Antibody [HRP] |
| NB720-B | Rabbit anti-Mouse IgG (H+L) Secondary Antibody [Biotin] |
| NBP1-43319-0.5mg | Mouse IgG1 Kappa Isotype Control (P3.6.2.8.1) |
| NBP2-46758PEP | SUMO2 Recombinant Protein Antigen |

Limitations

This product is for research use only and is not approved for use in humans or in clinical diagnosis. Primary Antibodies are guaranteed for 1 year from date of receipt.

For more information on our 100% guarantee, please visit www.novusbio.com/guarantee

Earn gift cards/discounts by submitting a review: www.novusbio.com/reviews/submit/NBP2-48454

Earn gift cards/discounts by submitting a publication using this product:
www.novusbio.com/publications

