

Product Datasheet

Cytokeratin, pan Antibody (KRTL/1077 + KRTH/1076) - IHC-Prediluted NBP2-48299

Unit Size: 7 ml

Store at 4C.

www.novusbio.com



technical@novusbio.com

Protocols, Publications, Related Products, Reviews, Research Tools and Images at:
www.novusbio.com/NBP2-48299

Updated 10/23/2024 v.20.1

Earn rewards for product
reviews and publications.

Submit a publication at www.novusbio.com/publications

Submit a review at www.novusbio.com/reviews/destination/NBP2-48299



NBP2-48299

Cytokeratin, pan Antibody (KRTL/1077 + KRTH/1076) - IHC-Prediluted

Product Information	
Unit Size	7 ml
Concentration	Please see the vial label for concentration. If unlisted please contact technical services.
Storage	Store at 4C.
Clonality	Monoclonal
Clone	KRTL/1077 + KRTH/1076
Preservative	0.05% Sodium Azide
Isotype	IgG1 Kappa/IgG1 Kappa
Purity	Protein A or G purified
Buffer	10 mM PBS with 0.05% BSA
Product Description	
Description	The prediluted antibody does not require any mixing, dilution, reconstitution, or titration; the antibody is ready-to-use and optimized for staining.
Host	Mouse
Gene ID	3848
Gene Symbol	KRT1
Species	Human, Rat
Reactivity Notes	Shows broad species reactivity.
Marker	Epithelial Marker
Specificity/Sensitivity	Twenty human keratins are resolved with two-dimensional gel electrophoresis into acidic (pI 6.0) subfamilies. This antibody cocktail recognizes acidic (Type I or LMW) and basic (Type II or HMW) cytokeratins, which include CK1, CK3, CK4, CK5, CK6, CK8, CK10, CK14, CK15, CK16, and CK19. Many studies have shown the usefulness of keratins as markers in cancer research and tumor diagnosis. KRTL/KRTH is a broad spectrum anti pan-cytokeratin antibody cocktail, which differentiates epithelial tumors from non-epithelial tumors e.g. squamous vs. adenocarcinoma of the lung, liver carcinoma, breast cancer, and esophageal cancer. It has been used to characterize the source of various neoplasms and to study the distribution of cytokeratin containing cells in epithelia during normal development and during the development of epithelial neoplasms. This antibody stains cytokeratins present in normal and abnormal human tissues and has shown high sensitivity in the recognition of epithelial cells and carcinomas.
Immunogen	Recombinant human KRT77 and KRT76 protein
Product Application Details	
Applications	Immunohistochemistry, Immunohistochemistry-Paraffin
Recommended Dilutions	Immunohistochemistry, Immunohistochemistry-Paraffin

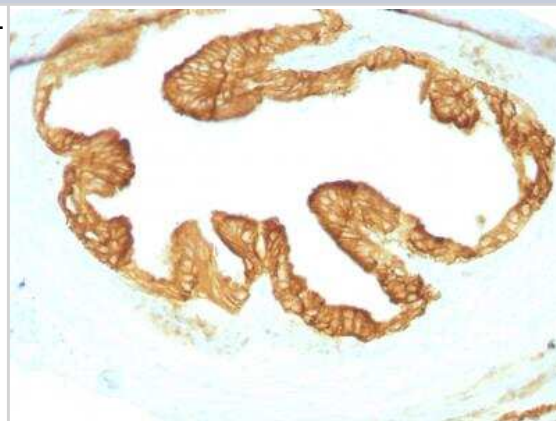


Application Notes

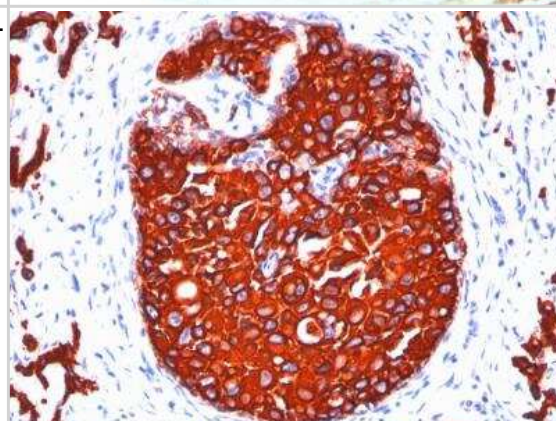
Molecular weight of antigen: 67 kDa (CK1); 64 kDa (CK3); 59 kDa (CK4); 58 kDa (CK5); 56 kDa (CK6); 52 kDa (CK8); 56.5 kDa (CK10); 50 kDa (CK14); 50 kDa (CK15); 48 kDa (CK16); 40 kDa (CK19). Immunohistochemistry-Paraffin 0.25 - 0.5 ug/mL for 30 minutes at RT. Staining of formalin-fixed tissues requires boiling tissue sections in 10 mM citrate buffer, pH 6.0, for 10 - 20 min followed by cooling at RT for 20 minutes. The 7 mL size is a pre-diluted size and no additional dilutions are required before using this item for the intended application.

Images

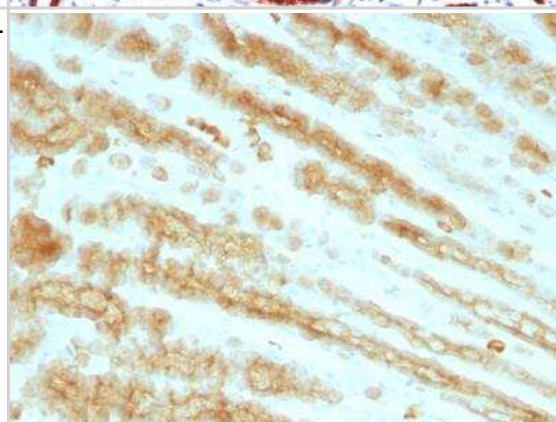
Immunohistochemistry-Paraffin: Cytokeratin, pan Antibody (KRTL/1077 + KRTH/1076) - IHC-Prediluted [NBP2-48299] - Rat Oviduct with Cytokeratin, pan Monoclonal Antibody cocktail (KRTL/1077 + KRTH/1076).



Immunohistochemistry-Paraffin: Cytokeratin, pan Antibody (KRTL/1077 + KRTH/1076) - IHC-Prediluted [NBP2-48299] - Human Breast Carcinoma stained with Cytokeratin, pan Monoclonal Antibody cocktail (KRTL/1077 + KRTH/1076).



Immunohistochemistry-Paraffin: Cytokeratin, pan Antibody (KRTL/1077 + KRTH/1076) - IHC-Prediluted [NBP2-48299] - Rat Stomach stained with Cytokeratin, pan Monoclonal Antibody cocktail (KRTL/1077 + KRTH/1076).





Novus Biologicals USA

10730 E. Briarwood Avenue
Centennial, CO 80112
USA
Phone: 303.730.1950
Toll Free: 1.888.506.6887
Fax: 303.730.1966
nb-customerservice@bio-techne.com

Bio-Techne Canada

21 Canmotor Ave
Toronto, ON M8Z 4E6
Canada
Phone: 905.827.6400
Toll Free: 855.668.8722
Fax: 905.827.6402
canada.inquires@bio-techne.com

Bio-Techne Ltd

19 Barton Lane
Abingdon Science Park
Abingdon, OX14 3NB, United Kingdom
Phone: (44) (0) 1235 529449
Free Phone: 0800 37 34 15
Fax: (44) (0) 1235 533420
info.EMEA@bio-techne.com

General Contact Information

www.novusbio.com
Technical Support: nb-technical@bio-
techne.com
Orders: nb-customerservice@bio-techne.com
General: novus@novusbio.com

Products Related to NBP2-48299

HAF007	Goat anti-Mouse IgG Secondary Antibody [HRP]
NB720-B	Rabbit anti-Mouse IgG (H+L) Secondary Antibody [Biotin]
DNST0	Endostatin [HRP]
MAB1455	Albumin Antibody (188835) [Unconjugated] - Serum

Limitations

This product is for research use only and is not approved for use in humans or in clinical diagnosis. Primary Antibodies are guaranteed for 1 year from date of receipt.

For more information on our 100% guarantee, please visit www.novusbio.com/guarantee

Earn gift cards/discounts by submitting a review: www.novusbio.com/reviews/submit/NBP2-48299

Earn gift cards/discounts by submitting a publication using this product:
www.novusbio.com/publications

