

Product Datasheet

EpCAM/TROP1 Antibody (EGP40/1110) - (ECD) - IHC- Prediluted NBP2-48264

Unit Size: 7 ml

Store at 4C.

www.novusbio.com



technical@novusbio.com

Protocols, Publications, Related Products, Reviews, Research Tools and Images at:
www.novusbio.com/NBP2-48264

Updated 10/23/2024 v.20.1

Earn rewards for product
reviews and publications.

Submit a publication at www.novusbio.com/publications

Submit a review at www.novusbio.com/reviews/destination/NBP2-48264



NBP2-48264

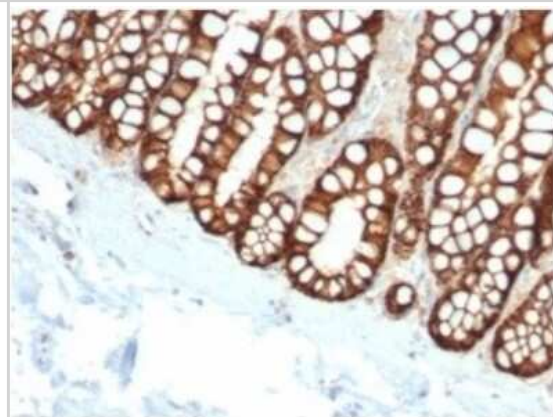
EpCAM/TROP1 Antibody (EGP40/1110) - (ECD) - IHC-Prediluted

Product Information	
Unit Size	7 ml
Concentration	Please see the vial label for concentration. If unlisted please contact technical services.
Storage	Store at 4C.
Clonality	Monoclonal
Clone	EGP40/1110
Preservative	0.05% Sodium Azide
Isotype	IgG2b Kappa
Purity	Protein A or G purified
Buffer	10 mM PBS with 0.05% BSA
Product Description	
Description	The prediluted antibody does not require any mixing, dilution, reconstitution, or titration; the antibody is ready-to-use and optimized for staining.
Host	Mouse
Gene ID	4072
Gene Symbol	EPCAM
Species	Human, Canine, Feline
Marker	Epithelial Marker
Specificity/Sensitivity	EGP40 is a 40-43kDa transmembrane epithelial glycoprotein, also identified as epithelial specific antigen (ESA), or epithelial cellular adhesion molecule (Ep-CAM). It is expressed on baso-lateral cell surface in most simple epithelia and a vast majority of carcinomas. This antibody has been used to distinguish adenocarcinoma from pleural mesothelioma and hepatocellular carcinoma. This antibody is also useful in distinguishing serous carcinomas of the ovary from mesothelioma.
Immunogen	Recombinant fragment from cytoplasmic domain (around aa 289-314) of human EpCAM/TROP1 (exact sequence is proprietary) (Uniprot: P16422)
Product Application Details	
Applications	Immunocytochemistry/ Immunofluorescence, Immunohistochemistry, Immunohistochemistry-Paraffin
Recommended Dilutions	Immunohistochemistry, Immunocytochemistry/ Immunofluorescence, Immunohistochemistry-Paraffin
Application Notes	Use in Immunocytochemistry/Immunofluorescence reported in scientific literature (PMID: 33000764). Immunohistochemistry (Formalin-fixed): 1-2ug/ml for 30 min at RT. Staining of formalin-fixed tissues requires heating tissue sections in 10mM Tris with 1mM EDTA, pH 9.0, for 45 min at 95C followed by cooling at RT for 20 minutes. Optimal dilution for a specific application should be determined.

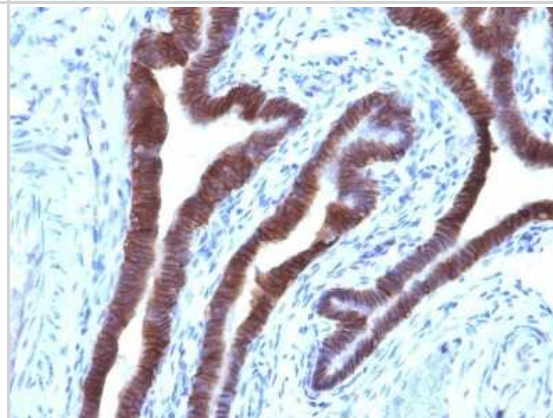


Images

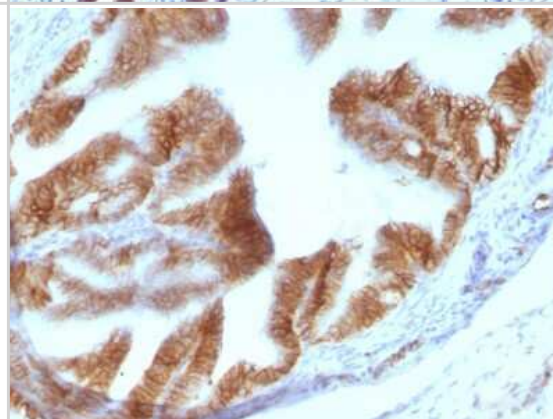
Immunohistochemistry-Paraffin: EpCAM/TROP1 Antibody (EGP40/1110) - (ECD) - IHC-Prediluted [NBP2-48264] - Formalin-fixed, paraffin-embedded feline (cat) small intestine stained with EpCAM/TROP1 Antibody (EGP40/1110) - (ECD).



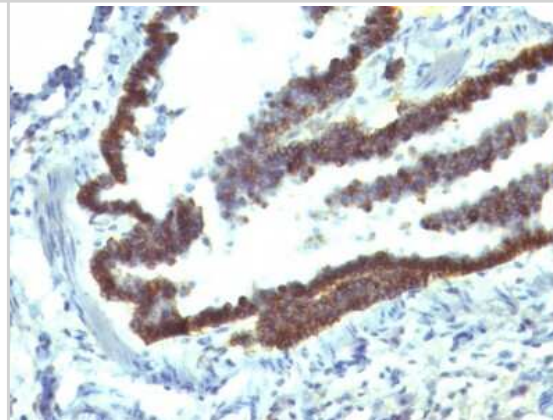
Immunohistochemistry-Paraffin: EpCAM/TROP1 Antibody (EGP40/1110) - (ECD) - IHC-Prediluted [NBP2-48264] - Formalin-fixed, paraffin-embedded human Ovarian Carcinoma stained with EpCAM Mouse Monoclonal Antibody (EGP40/1110).



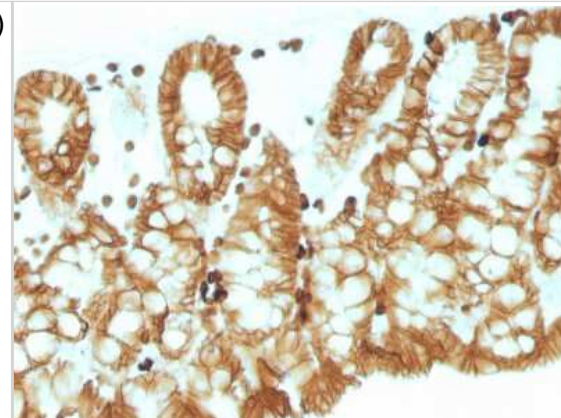
Immunohistochemistry-Paraffin: EpCAM/TROP1 Antibody (EGP40/1110) - (ECD) - IHC-Prediluted [NBP2-48264] - Formalin-fixed, paraffin-embedded Rat Oviduct stained with EpCAM Mouse Monoclonal Antibody (EGP40/1110).



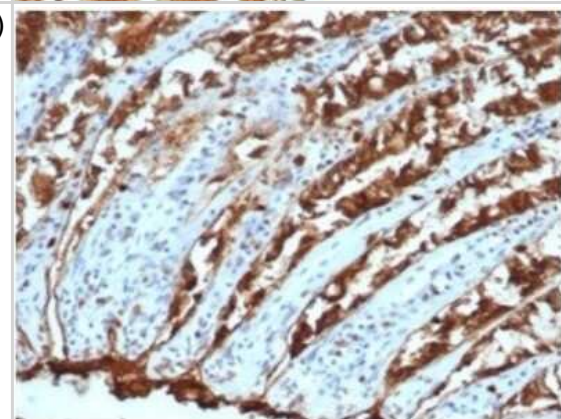
Immunohistochemistry-Paraffin: EpCAM/TROP1 Antibody (EGP40/1110) - (ECD) - IHC-Prediluted [NBP2-48264] - Formalin-fixed, paraffin-embedded Rat Lung stained with EpCAM Mouse Monoclonal Antibody (EGP40/1110).



Immunohistochemistry-Paraffin: EpCAM/TROP1 Antibody (EGP40/1110) - (ECD) - IHC-Prediluted [NBP2-48264] - Formalin-fixed, paraffin-embedded Mouse Colon stained with EpCAM Mouse Monoclonal Antibody (EGP40/1110).



Immunohistochemistry-Paraffin: EpCAM/TROP1 Antibody (EGP40/1110) - (ECD) - IHC-Prediluted [NBP2-48264] - Formalin-fixed, paraffin-embedded canine (dog) colon stained with EpCAM/TROP1 Antibody (EGP40/1110) - (ECD).





Novus Biologicals USA

10730 E. Briarwood Avenue
Centennial, CO 80112
USA
Phone: 303.730.1950
Toll Free: 1.888.506.6887
Fax: 303.730.1966
nb-customerservice@bio-techne.com

Bio-Techne Canada

21 Canmotor Ave
Toronto, ON M8Z 4E6
Canada
Phone: 905.827.6400
Toll Free: 855.668.8722
Fax: 905.827.6402
canada.inquires@bio-techne.com

Bio-Techne Ltd

19 Barton Lane
Abingdon Science Park
Abingdon, OX14 3NB, United Kingdom
Phone: (44) (0) 1235 529449
Free Phone: 0800 37 34 15
Fax: (44) (0) 1235 533420
info.EMEA@bio-techne.com

General Contact Information

www.novusbio.com
Technical Support: nb-technical@bio-techne.com
Orders: nb-customerservice@bio-techne.com
General: novus@novusbio.com

Products Related to NBP2-48264

HAF007	Goat anti-Mouse IgG Secondary Antibody [HRP]
NB720-B	Rabbit anti-Mouse IgG (H+L) Secondary Antibody [Biotin]
NBP1-43317-0.5mg	Mouse IgG2b Kappa Light Chain Isotype Control (MG2b)
NBP2-52190-0.05mg	Recombinant Human EpCAM/TROP1 His Protein

Limitations

This product is for research use only and is not approved for use in humans or in clinical diagnosis. Primary Antibodies are guaranteed for 1 year from date of receipt.

For more information on our 100% guarantee, please visit www.novusbio.com/guarantee

Earn gift cards/discounts by submitting a review: www.novusbio.com/reviews/submit/NBP2-48264

Earn gift cards/discounts by submitting a publication using this product:
www.novusbio.com/publications

