

# Product Datasheet

## Cyclin D1 Antibody (CCND1/809) - Azide and BSA Free NBP2-47921-0.1mg

Unit Size: 0.1 mg

Store at -20 to -80C. Avoid freeze-thaw cycles.

[www.novusbio.com](http://www.novusbio.com)



[technical@novusbio.com](mailto:technical@novusbio.com)

Protocols, Publications, Related Products, Reviews, Research Tools and Images at:  
[www.novusbio.com/NBP2-47921](http://www.novusbio.com/NBP2-47921)

Updated 10/23/2024 v.20.1

Earn rewards for product  
reviews and publications.

Submit a publication at [www.novusbio.com/publications](http://www.novusbio.com/publications)

Submit a review at [www.novusbio.com/reviews/destination/NBP2-47921](http://www.novusbio.com/reviews/destination/NBP2-47921)



**NBP2-47921-0.1mg**

Cyclin D1 Antibody (CCND1/809) - Azide and BSA Free

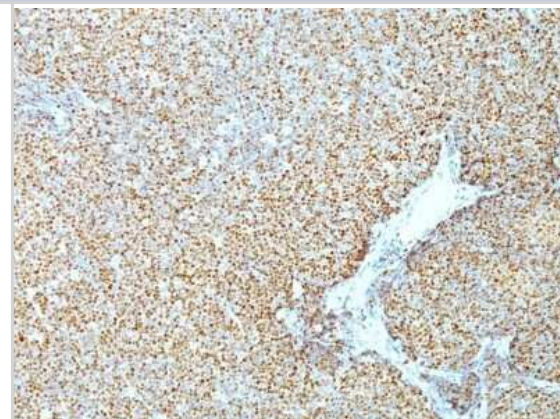
Product Information	
Unit Size	0.1 mg
Concentration	1.0 mg/ml
Storage	Store at -20 to -80C. Avoid freeze-thaw cycles.
Clonality	Monoclonal
Clone	CCND1/809
Preservative	No Preservative
Isotype	IgG2a Kappa
Purity	Protein A or G purified
Buffer	10 mM PBS
Target Molecular Weight	36 kDa

Product Description	
Description	1.0 mg/ml of antibody purified from Bioreactor Concentrate by Protein A/G. Prepared in 10mM PBS WITHOUT BSA & azide. Also available at 200 ug/ml WITH BSA & azide (NBP2-44586).  Antibody with azide - store at 2 to 8C. Antibody without azide - store at -20 to -80C.
Host	Mouse
Gene ID	595
Gene Symbol	CCND1
Species	Human
Marker	G1-Cyclin & Mantle Cell Marker
Specificity/Sensitivity	Recognizes a protein of 36kDa, identified as cyclin D1. Cyclin D1, one of the key cell cycle regulators, is a putative proto-oncogene overexpressed in a wide variety of human neoplasms. This antibody neutralizes the activity of cyclin D1 in vivo. About 60% of mantle cell lymphomas (MCL) contain a t(11; 14)(q13; q32) translocation resulting in over-expression of cyclin D1. This antibody is useful in identifying mantle cell lymphomas (cyclin D1 positive) from CLL/SLL and follicular lymphomas (cyclin D1 negative). Occasionally, hairy cell leukemia and plasma cell myeloma weakly express Cyclin D1.
Immunogen	Recombinant human Cyclin D1 protein (Uniprot: P24385)

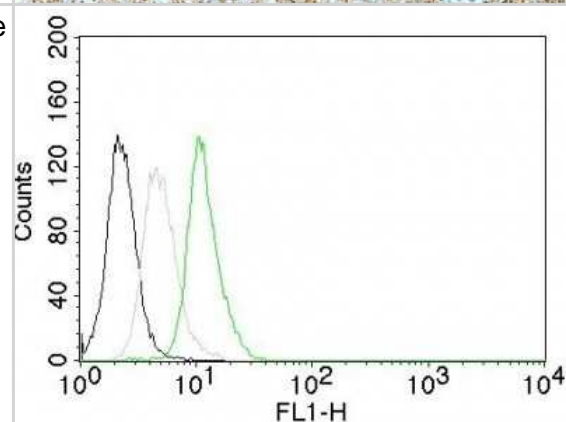
Product Application Details	
Applications	Flow Cytometry, Immunohistochemistry, Immunohistochemistry-Paraffin, CyTOF-ready
Recommended Dilutions	Flow Cytometry 0.5 - 1 ug/million cells in 0.1 ml, Immunohistochemistry, Immunohistochemistry-Paraffin 0.5 - 1.0 ug/ml, CyTOF-ready
Application Notes	Immunohistochemistry (Formalin-fixed): 1-2ug/ml for 30 minutes at RT. Staining of formalin-fixed tissues requires heating tissue sections in 10mM Tris with 1mM EDTA, pH 9.0, for 45 min at 95C followed by cooling at RT for 20 minutes. Optimal dilution for a specific application should be determined.

## Images

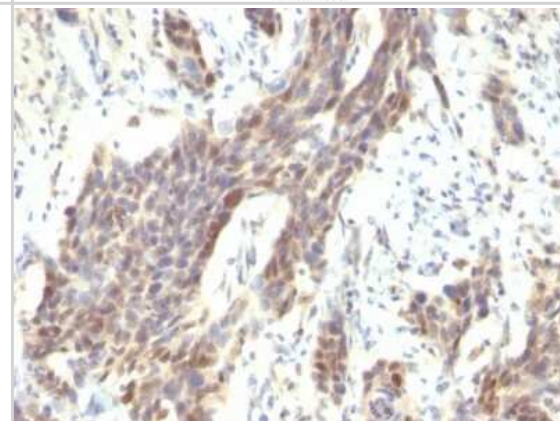
Immunohistochemistry-Paraffin: Cyclin D1 Antibody (CCND1/809) - Azide and BSA Free [NBP2-47921] - Human Mantle Cell Lymphoma stained with Cyclin D1 Monoclonal Antibody (CCND1/809).



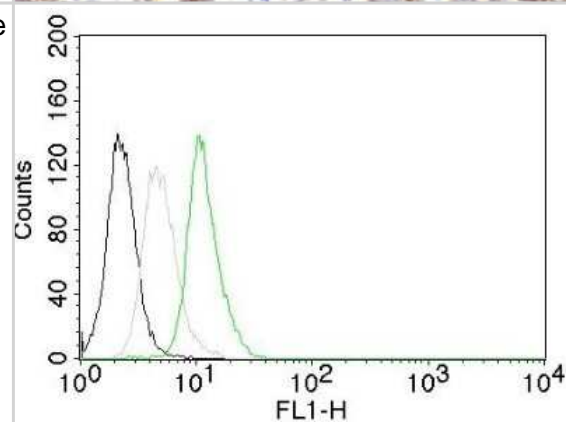
Flow Cytometry: Cyclin D1 Antibody (CCND1/809) - Azide and BSA Free [NBP2-47921] - Human Cyclin D1 on Jurkat Cells. Black: Cells alone; Grey: Isotype Control; Green: AF488-labeled Cyclin D1 Monoclonal Antibody (CCND1/809).



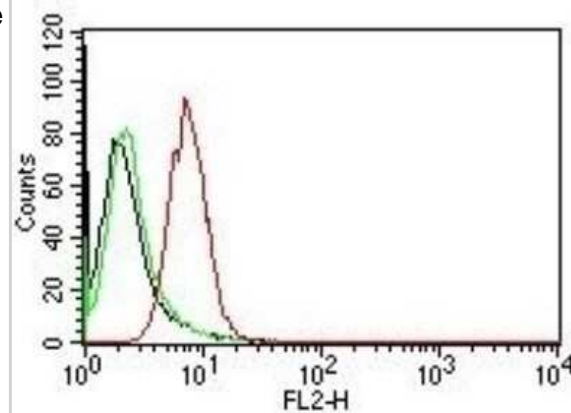
Immunohistochemistry-Paraffin: Cyclin D1 Antibody (CCND1/809) - Azide and BSA Free [NBP2-47921] - Human Bladder Carcinoma stained with Cyclin D1 Monoclonal Antibody (CCND1/809).



Flow Cytometry: Cyclin D1 Antibody (CCND1/809) - Azide and BSA Free [NBP2-47921] - Flow Cytometry of human Cyclin D1 on Jurkat cells. Black: cells alone; Grey: Isotype Control; Green: AF488-labeled Cyclin D1 Antibody (CCND1/809).



Flow Cytometry: Cyclin D1 Antibody (CCND1/809) - Azide and BSA Free [NBP2-47921] - Flow Cytometric analysis of human Cyclin D1 on HeLa cells. Black: cells alone; Green: Isotype Control; Red: PE-labeled Cyclin D1 Antibody (CCND1/809).





### **Novus Biologicals USA**

10730 E. Briarwood Avenue  
Centennial, CO 80112  
USA  
Phone: 303.730.1950  
Toll Free: 1.888.506.6887  
Fax: 303.730.1966  
nb-customerservice@bio-techne.com

### **Bio-Techne Canada**

21 Canmotor Ave  
Toronto, ON M8Z 4E6  
Canada  
Phone: 905.827.6400  
Toll Free: 855.668.8722  
Fax: 905.827.6402  
canada.inquires@bio-techne.com

### **Bio-Techne Ltd**

19 Barton Lane  
Abingdon Science Park  
Abingdon, OX14 3NB, United Kingdom  
Phone: (44) (0) 1235 529449  
Free Phone: 0800 37 34 15  
Fax: (44) (0) 1235 533420  
info.EMEA@bio-techne.com

### **General Contact Information**

www.novusbio.com  
Technical Support: nb-technical@bio-techne.com  
Orders: nb-customerservice@bio-techne.com  
General: novus@novusbio.com

### **Products Related to NBP2-47921-0.1mg**

---

HAF007	Goat anti-Mouse IgG Secondary Antibody [HRP]
NB720-B	Rabbit anti-Mouse IgG (H+L) Secondary Antibody [Biotin]
NBP1-96981-0.5mg	Mouse IgG2a Kappa Isotype Control (M2AK)
H00000595-P01-10ug	Recombinant Human Cyclin D1 GST (N-Term) Protein

---

### **Limitations**

This product is for research use only and is not approved for use in humans or in clinical diagnosis. Primary Antibodies are guaranteed for 1 year from date of receipt.

For more information on our 100% guarantee, please visit [www.novusbio.com/guarantee](http://www.novusbio.com/guarantee)

Earn gift cards/discounts by submitting a review: [www.novusbio.com/reviews/submit/NBP2-47921](http://www.novusbio.com/reviews/submit/NBP2-47921)

Earn gift cards/discounts by submitting a publication using this product:  
[www.novusbio.com/publications](http://www.novusbio.com/publications)

