

Product Datasheet

WT1 Antibody (WT1/857 + 6F-H2) - Azide and BSA Free NBP2-47858-0.1mg

Unit Size: 0.1 mg

Store at -20 to -80C. Avoid freeze-thaw cycles.

www.novusbio.com



technical@novusbio.com

Protocols, Publications, Related Products, Reviews, Research Tools and Images at:
www.novusbio.com/NBP2-47858

Updated 10/23/2024 v.20.1

Earn rewards for product
reviews and publications.

Submit a publication at www.novusbio.com/publications

Submit a review at www.novusbio.com/reviews/destination/NBP2-47858



NBP2-47858-0.1mg

WT1 Antibody (WT1/857 + 6F-H2) - Azide and BSA Free

Product Information	
Unit Size	0.1 mg
Concentration	1.0 mg/ml
Storage	Store at -20 to -80C. Avoid freeze-thaw cycles.
Clonality	Monoclonal
Clone	WT1/857 + 6F-H2
Preservative	No Preservative
Isotype	IgG1 Kappa/IgG1 Kappa
Purity	Protein A or G purified
Buffer	10 mM PBS

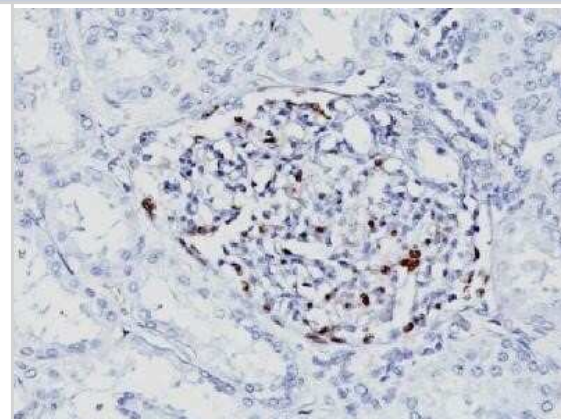
Product Description	
Description	1.0 mg/ml of antibody purified from Bioreactor Concentrate by Protein A/G. Prepared in 10mM PBS WITHOUT BSA & azide. Also available at 200 ug/ml WITH BSA & azide (NBP2-44607). Antibody with azide - store at 2 to 8C. Antibody without azide - store at -20 to -80C.
Host	Mouse
Gene ID	7490
Gene Symbol	WT1
Species	Human, Mouse, Rat
Reactivity Notes	Use in Mouse reported in scientific literature (PMID:33631230).
Marker	Wilm's Tumor & Mesothelial Marker
Specificity/Sensitivity	Recognizes a 47-55kDa-tumor suppressor protein, identified as Wilms tumor and mesothelioma. WT1 protein has been identified in proliferative mesothelial cells, malignant mesothelioma, ovarian carcinoma, gonadoblastoma, nephroblastoma, and desmoplastic small round cell tumor. Lung adenocarcinomas rarely stain positive with this antibody. WT1 protein expression in mesothelial cells has become a reliable marker for the diagnosis of mesotheliomas.
Immunogen	Recombinant full length human WT1 protein (WT1/857); Recombinant fragment aa1-181 of human WT1 (6F-H2) (Uniprot: P19544)

Product Application Details	
Applications	Immunohistochemistry, Immunohistochemistry-Paraffin, CyTOF-ready
Recommended Dilutions	Immunohistochemistry, Immunohistochemistry-Paraffin 0.5 - 1.0 ug/ml, CyTOF-ready
Application Notes	Immunohistochemistry (Formalin-fixed): 1-2ug/ml for 30 minutes at RT. Staining of formalin-fixed tissues requires heating tissue sections in 10mM Tris with 1mM EDTA, pH 9.0, for 45 min at 95C followed by cooling at RT for 20 minutes. Optimal dilution for a specific application should be determined.

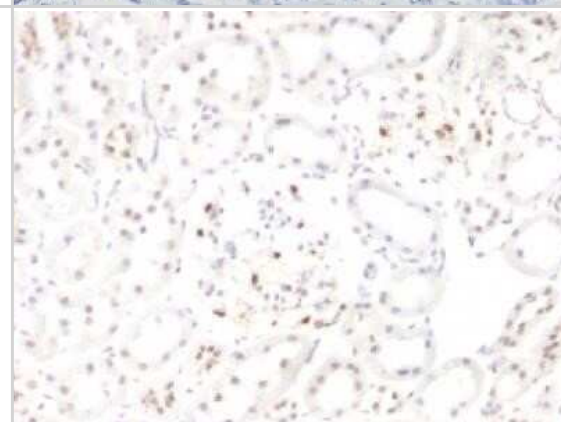


Images

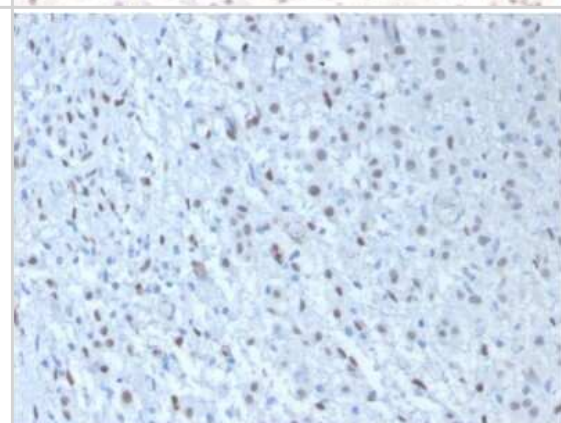
Immunohistochemistry-Paraffin: WT1 Antibody (WT1/857 + 6F-H2) - Azide and BSA Free [NBP2-47858] - Formalin-fixed, paraffin-embedded human Fetal kidney stained with WT1 Monoclonal Antibody (WT1/857+6F-H2).



Immunohistochemistry-Paraffin: WT1 Antibody (WT1/857 + 6F-H2) - Azide and BSA Free [NBP2-47858] - Formalin-fixed, paraffin-embedded Rat kidney stained with WT1 monoclonal antibody (WT1/857+6F-H2).



Immunohistochemistry-Paraffin: WT1 Antibody (WT1/857 + 6F-H2) - Azide and BSA Free [NBP2-47858] - Formalin-fixed, paraffin-embedded human Mesothelioma stained with WT1 Antibody (WT1/857 + 6F-H2).





Novus Biologicals USA

10730 E. Briarwood Avenue
Centennial, CO 80112
USA
Phone: 303.730.1950
Toll Free: 1.888.506.6887
Fax: 303.730.1966
nb-customerservice@bio-techne.com

Bio-Techne Canada

21 Canmotor Ave
Toronto, ON M8Z 4E6
Canada
Phone: 905.827.6400
Toll Free: 855.668.8722
Fax: 905.827.6402
canada.inquires@bio-techne.com

Bio-Techne Ltd

19 Barton Lane
Abingdon Science Park
Abingdon, OX14 3NB, United Kingdom
Phone: (44) (0) 1235 529449
Free Phone: 0800 37 34 15
Fax: (44) (0) 1235 533420
info.EMEA@bio-techne.com

General Contact Information

www.novusbio.com
Technical Support: nb-technical@bio-techne.com
Orders: nb-customerservice@bio-techne.com
General: novus@novusbio.com

Products Related to NBP2-47858-0.1mg

HAF007	Goat anti-Mouse IgG Secondary Antibody [HRP]
NB720-B	Rabbit anti-Mouse IgG (H+L) Secondary Antibody [Biotin]
H00007490-Q01-10ug	Recombinant Human WT1 GST (N-Term) Protein
292-G2-050	IGF-II/IGF2 [Unconjugated]

Limitations

This product is for research use only and is not approved for use in humans or in clinical diagnosis. Primary Antibodies are guaranteed for 1 year from date of receipt.

For more information on our 100% guarantee, please visit www.novusbio.com/guarantee

Earn gift cards/discounts by submitting a review: www.novusbio.com/reviews/submit/NBP2-47858

Earn gift cards/discounts by submitting a publication using this product:
www.novusbio.com/publications

