

Product Datasheet

Enolase 2/Neuron-specific Enolase Antibody (ENO2/1375) NBP2-47635-0.1mg

Unit Size: 0.1 mg

Store at 4C.

www.novusbio.com



technical@novusbio.com

Protocols, Publications, Related Products, Reviews, Research Tools and Images at:
www.novusbio.com/NBP2-47635

Updated 10/23/2024 v.20.1

Earn rewards for product
reviews and publications.

Submit a publication at www.novusbio.com/publications

Submit a review at www.novusbio.com/reviews/destination/NBP2-47635



NBP2-47635-0.1mg

Enolase 2/Neuron-specific Enolase Antibody (ENO2/1375)

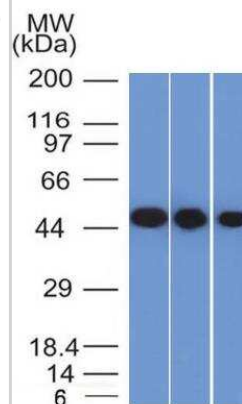
| Product Information | |
|-------------------------|--------------------------|
| Unit Size | 0.1 mg |
| Concentration | 0.2 mg/ml |
| Storage | Store at 4C. |
| Clonality | Monoclonal |
| Clone | ENO2/1375 |
| Preservative | 0.05% Sodium Azide |
| Isotype | IgG2b Kappa |
| Purity | Protein A or G purified |
| Buffer | 10 mM PBS with 0.05% BSA |
| Target Molecular Weight | 50 kDa |

| Product Description | |
|---------------------|--|
| Description | 200ug/ml of antibody purified from Bioreactor Concentrate by Protein A or G. Prepared in 10 mM PBS with 0.05% BSA & 0.05% azide. Also available WITHOUT BSA & azide at 1.0 mg/ml. (NBP2-54452) Antibody with azide - store at 2 to 8C. Antibody without azide - store at -20 to -80C. |
| Host | Mouse |
| Gene ID | 2026 |
| Gene Symbol | ENO2 |
| Species | Human, Mouse, Rat |
| Marker | Neuroendocrine Marker |
| Immunogen | A synthetic peptide of human Enolase 2/Neuron-specific Enolase (around aa416-433) (exact sequence is proprietary) (Uniprot: P09104) |

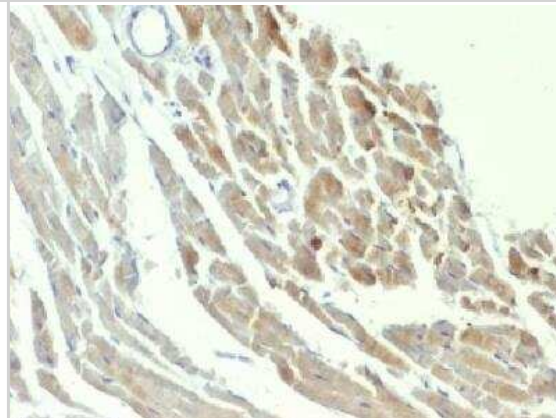
| Product Application Details | |
|-----------------------------|---|
| Applications | Western Blot, Flow (Intracellular), Immunohistochemistry, Immunohistochemistry-Paraffin |
| Recommended Dilutions | Western Blot 1-2 ug/ml, Immunohistochemistry, Immunohistochemistry-Paraffin 0.2-0.4 ug/ml, Flow (Intracellular) |
| Application Notes | Immunohistochemistry (Formalin-fixed): 0.2-0.4ug/ml for 30 min at RT. Staining of formalin-fixed tissues requires heating tissue sections in 10mM Tris with 1mM EDTA, pH 9.0, for 45 min at 95C followed by cooling at RT for 20 minutes. Optimal dilution for a specific application should be determined. |

Images

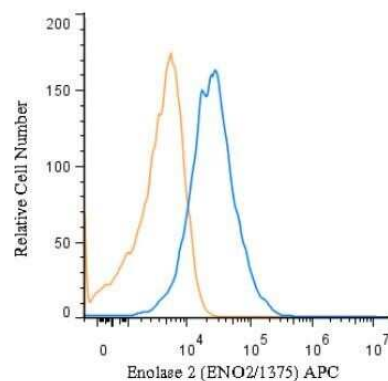
Western Blot: Enolase 2/Neuron-specific Enolase Antibody (ENO2/1375) [NBP2-47635] - Analysis of Y79, HeLa and HepG2 Cell Lysate using NSE, gamma Monoclonal Antibody (ENO2/1375).



Immunohistochemistry-Paraffin: Enolase 2/Neuron-specific Enolase Antibody (ENO2/1375) [NBP2-47635] - Formalin-fixed, paraffinembedded Rat Heart stained with NSE gamma Monoclonal Antibody (ENO2/1375).

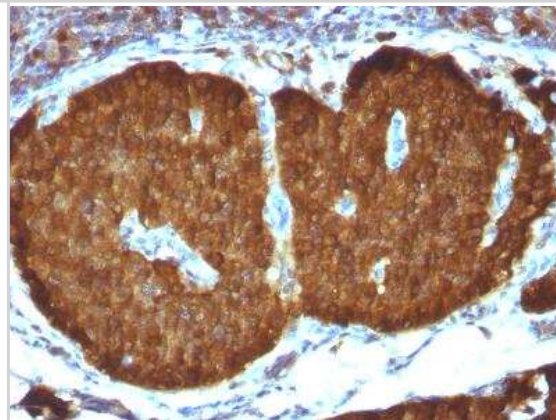


Flow (Intracellular): Enolase 2/Neuron-specific Enolase Antibody (ENO2/1375) [NBP2-47635] - An intracellular stain was performed on HeLa cells with Enolase 2/Neuron-specific Enolase Antibody (ENO2/1375) NBP2-54452APC (blue) and a matched isotype control (orange). Cells were fixed with 4% PFA and then permeablized with 0.1% saponin. Cells were incubated in an antibody dilution of 2.5 ug/mL for 30 minutes at room temperature. Both antibodies were conjugated to Allophycocyanin. Image from the Allophycocyanin version of this antibody.

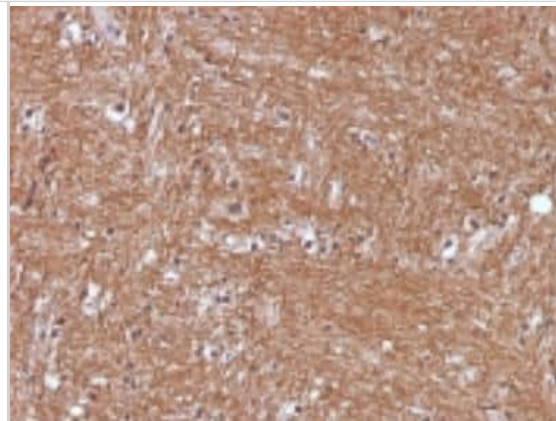


Copyright © 2018 Novus Biologicals

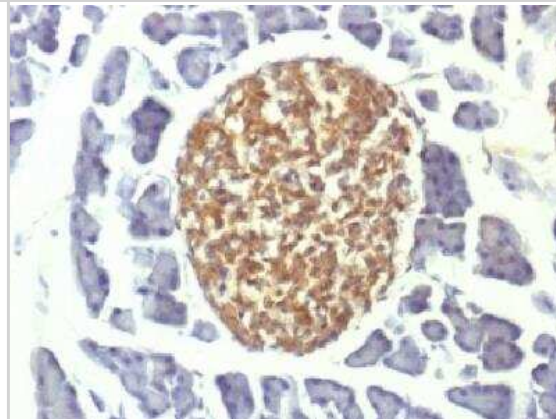
Immunohistochemistry-Paraffin: Enolase 2/Neuron-specific Enolase Antibody (ENO2/1375) [NBP2-47635] - Formalin-fixed, paraffin-embedded Human Pheochromocytoma stained with NSE gamma Monoclonal Antibody (ENO2/1375).



Immunohistochemistry-Paraffin: Enolase 2/Neuron-specific Enolase Antibody (ENO2/1375) [NBP2-47635] - Formalin-fixed, paraffin-embedded Human cerebellum stained with NSE gamma Monoclonal Antibody (ENO2/1375).



Immunohistochemistry-Paraffin: Enolase 2/Neuron-specific Enolase Antibody (ENO2/1375) [NBP2-47635] - Formalin-fixed, paraffin-embedded mouse pancreas stained with NSE gamma Monoclonal Antibody (ENO2/1375).





Novus Biologicals USA

10730 E. Briarwood Avenue
Centennial, CO 80112
USA
Phone: 303.730.1950
Toll Free: 1.888.506.6887
Fax: 303.730.1966
nb-customerservice@bio-techne.com

Bio-Techne Canada

21 Canmotor Ave
Toronto, ON M8Z 4E6
Canada
Phone: 905.827.6400
Toll Free: 855.668.8722
Fax: 905.827.6402
canada.inquires@bio-techne.com

Bio-Techne Ltd

19 Barton Lane
Abingdon Science Park
Abingdon, OX14 3NB, United Kingdom
Phone: (44) (0) 1235 529449
Free Phone: 0800 37 34 15
Fax: (44) (0) 1235 533420
info.EMEA@bio-techne.com

General Contact Information

www.novusbio.com
Technical Support: nb-technical@bio-techne.com
Orders: nb-customerservice@bio-techne.com
General: novus@novusbio.com

Products Related to NBP2-47635-0.1mg

| | |
|------------------|---|
| HAF007 | Goat anti-Mouse IgG Secondary Antibody [HRP] |
| NB720-B | Rabbit anti-Mouse IgG (H+L) Secondary Antibody [Biotin] |
| NBP1-43317-0.5mg | Mouse IgG2b Kappa Light Chain Isotype Control (MG2b) |
| NBP2-61382-1mg | Recombinant Human Enolase 2/Neuron-specific Enolase Protein |

Limitations

This product is for research use only and is not approved for use in humans or in clinical diagnosis. Primary Antibodies are guaranteed for 1 year from date of receipt.

For more information on our 100% guarantee, please visit www.novusbio.com/guarantee

Earn gift cards/discounts by submitting a review: www.novusbio.com/reviews/submit/NBP2-47635

Earn gift cards/discounts by submitting a publication using this product:
www.novusbio.com/publications

