

Product Datasheet

Laminin beta 3 Antibody (CL3353) - BSA Free NBP2-46622

Unit Size: 0.1 ml

Store at 4C short term. Aliquot and store at -20C long term. Avoid freeze-thaw cycles.

www.novusbio.com



technical@novusbio.com

Reviews: 1 Publications: 2

Protocols, Publications, Related Products, Reviews, Research Tools and Images at:
www.novusbio.com/NBP2-46622

Updated 2/27/2025 v.20.1

**Earn rewards for product
reviews and publications.**

Submit a publication at www.novusbio.com/publications

Submit a review at www.novusbio.com/reviews/destination/NBP2-46622



NBP2-46622

Laminin beta 3 Antibody (CL3353) - BSA Free

Product Information

Unit Size	0.1 ml
Concentration	Concentrations vary lot to lot. See vial label for concentration. If unlisted please contact technical services.
Storage	Store at 4C short term. Aliquot and store at -20C long term. Avoid freeze-thaw cycles.
Clonality	Monoclonal
Clone	CL3353
Preservative	0.02% Sodium Azide
Isotype	IgG1
Purity	Protein A purified
Buffer	PBS (pH 7.2) and 40% Glycerol

Product Description

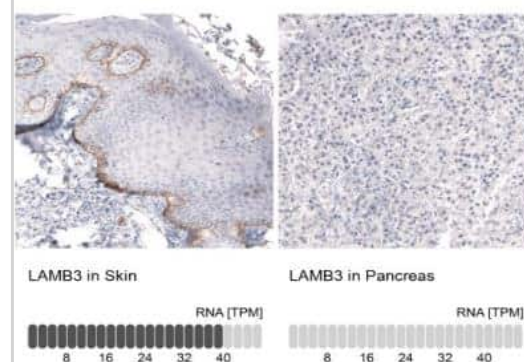
Host	Mouse
Gene ID	3914
Gene Symbol	LAMB3
Species	Human, Rat
Immunogen	This antibody was developed using a recombinant protein derived from Q13751, with the exact immunogen sequence remaining proprietary.

Product Application Details

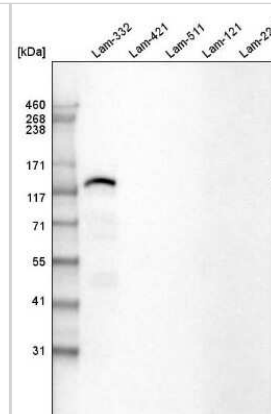
Applications	Western Blot, Immunocytochemistry/ Immunofluorescence, Immunohistochemistry, Immunohistochemistry-Paraffin
Recommended Dilutions	Western Blot 1 ug/ml, Immunohistochemistry 1:500 - 1:1000, Immunocytochemistry/ Immunofluorescence 2-10 ug/ml, Immunohistochemistry-Paraffin 1:500 - 1:1000
Application Notes	For IHC-Paraffin, HIER pH 6 retrieval is recommended. ICC/IF Fixation/Permeabilization: PFA/Triton X-100.

Images

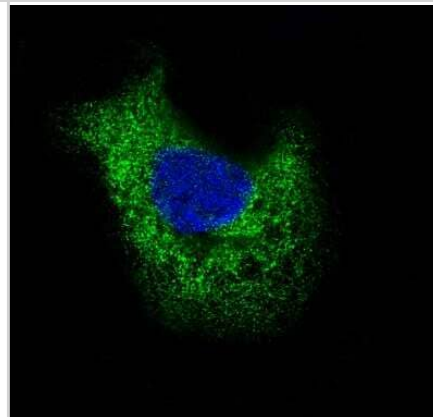
Immunohistochemistry-Paraffin: Laminin beta 3 Antibody (CL3353) [NBP2-46622] - Analysis in human skin and pancreas tissues using NBP2-46622 antibody. Corresponding LAMB3 RNA-seq data are presented for the same tissues.



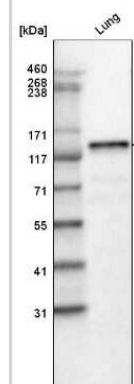
Western Blot: Laminin beta 3 Antibody (CL3353) [NBP2-46622] - Analysis of purified human recombinant Laminin-332, Laminin-421, Laminin-511, Laminin-121 and Laminin-221.



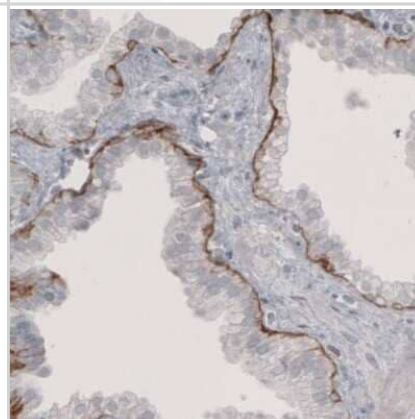
Immunocytochemistry/Immunofluorescence: Laminin beta 3 Antibody (CL3353) [NBP2-46622] - Staining of A-431 cells using the Anti-LAMB3 monoclonal antibody, showing specific staining in the endoplasmic reticulum in green. Microtubule- and nuclear probes are visualized in red and blue, respectively (where available). Antibody staining is shown in green.



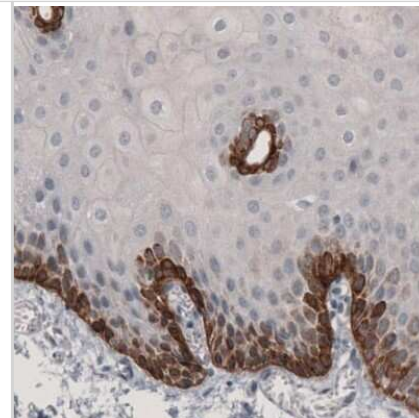
Western Blot: Laminin beta 3 Antibody (CL3353) [NBP2-46622] - Analysis in human lung tissue



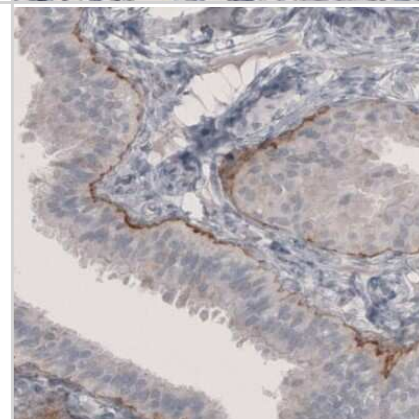
Immunohistochemistry-Paraffin: Laminin beta 3 Antibody (CL3353) [NBP2-46622] - Staining of human prostate shows immunoreactivity in basement membrane of glandular epithelium.



Immunohistochemistry-Paraffin: Laminin beta 3 Antibody (CL3353) [NBP2-46622] - Staining of human urinary bladder wall shows positivity in basement membrane of squamous epithelium.



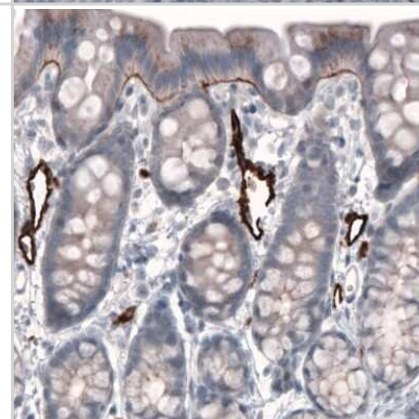
Immunohistochemistry-Paraffin: Laminin beta 3 Antibody (CL3353) [NBP2-46622] - Staining of human fallopian tube shows immunoreactivity in basement membrane of glandular epithelium.



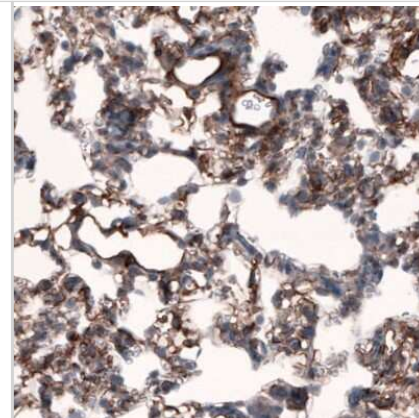
Immunohistochemistry-Paraffin: Laminin beta 3 Antibody (CL3353) [NBP2-46622] - Staining of human tonsil shows absence of immunoreactivity in lymphoid tissue (negative control).



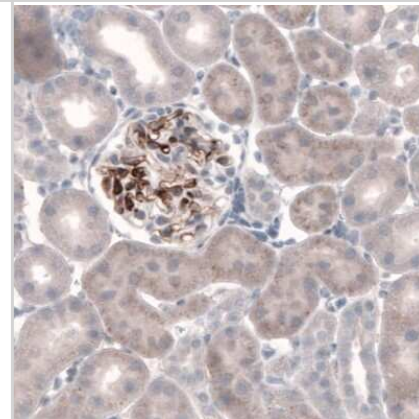
Immunohistochemistry-Paraffin: Laminin beta 3 Antibody (CL3353) [NBP2-46622] - Staining of rat rectum shows immunoreactivity in basement membrane of glandular epithelium and in blood vessels.



Immunohistochemistry-Paraffin: Laminin beta 3 Antibody (CL3353) [NBP2-46622] - Staining of rat lung shows positivity in basement membrane of respiratory epithelium.



Immunohistochemistry-Paraffin: Laminin beta 3 Antibody (CL3353) [NBP2-46622] - Staining of rat kidney shows immunoreactivity in renal glomerulus.



Publications

Shiju TM, Sampaio LP, Hilgert GSL, Wilson SE Corneal epithelial basement membrane assembly is mediated by epithelial cells in coordination with corneal fibroblasts during wound healing Molecular vision 2023-05-20 [PMID: 37287640] (IHC-Fr, Rabbit)

de Oliveira RC, Sampaio LP, Shiju TM et al. Epithelial Basement Membrane Regeneration After PRK-Induced Epithelial-Stromal Injury in Rabbits: Fibrotic Versus Non-fibrotic Corneal Healing Journal of refractive surgery (Thorofare, N.J. : 1995) 2022-01-01 [PMID: 35020537]



Novus Biologicals USA

10730 E. Briarwood Avenue
Centennial, CO 80112
USA
Phone: 303.730.1950
Toll Free: 1.888.506.6887
Fax: 303.730.1966
nb-customerservice@bio-techne.com

Bio-Techne Canada

21 Canmotor Ave
Toronto, ON M8Z 4E6
Canada
Phone: 905.827.6400
Toll Free: 855.668.8722
Fax: 905.827.6402
canada.inquires@bio-techne.com

Bio-Techne Ltd

19 Barton Lane
Abingdon Science Park
Abingdon, OX14 3NB, United Kingdom
Phone: (44) (0) 1235 529449
Free Phone: 0800 37 34 15
Fax: (44) (0) 1235 533420
info.EMEA@bio-techne.com

General Contact Information

www.novusbio.com
Technical Support: nb-technical@bio-techne.com
Orders: nb-customerservice@bio-techne.com
General: novus@novusbio.com

Products Related to NBP2-46622

NBP2-46622PEP	Laminin beta 3 Recombinant Protein Antigen
HAF007	Goat anti-Mouse IgG Secondary Antibody [HRP]
NB720-B	Rabbit anti-Mouse IgG (H+L) Secondary Antibody [Biotin]
NBP1-97005-0.5mg	Mouse IgG1 Isotype Control (MG1)

Limitations

This product is for research use only and is not approved for use in humans or in clinical diagnosis. Primary Antibodies are guaranteed for 1 year from date of receipt.

For more information on our 100% guarantee, please visit www.novusbio.com/guarantee

Earn gift cards/discounts by submitting a review: www.novusbio.com/reviews/submit/NBP2-46622

Earn gift cards/discounts by submitting a publication using this product:
www.novusbio.com/publications

