

Product Datasheet

CLE7 homolog Antibody (OTI2A4) NBP2-46591

Unit Size: 0.1 ml

Store at -20C. Avoid freeze-thaw cycles.

www.novusbio.com



technical@novusbio.com

Protocols, Publications, Related Products, Reviews, Research Tools and Images at:
www.novusbio.com/NBP2-46591

Updated 9/9/2025 v.20.1

Earn rewards for product
reviews and publications.

Submit a publication at www.novusbio.com/publications

Submit a review at www.novusbio.com/reviews/destination/NBP2-46591



NBP2-46591

CLE7 homolog Antibody (OTI2A4)

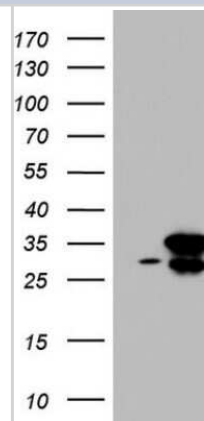
Product Information	
Unit Size	0.1 ml
Concentration	1 mg/ml
Storage	Store at -20C. Avoid freeze-thaw cycles.
Clonality	Monoclonal
Clone	OTI2A4
Preservative	0.02% Sodium Azide
Isotype	IgG1
Purity	Immunogen affinity purified
Buffer	PBS (pH 7.3), 1.0% BSA and 50% Glycerol

Product Description	
Description	Novus Biologicals Mouse CLE7 homolog Antibody (OTI2A4) (NBP2-46591) is a monoclonal antibody validated for use in IHC and WB. All Novus Biologicals antibodies are covered by our 100% guarantee.
Host	Mouse
Gene ID	51637
Gene Symbol	RTRAF
Species	Human
Immunogen	Full length human recombinant protein of human C14orf166 (NP_057123) produced in E.coli.

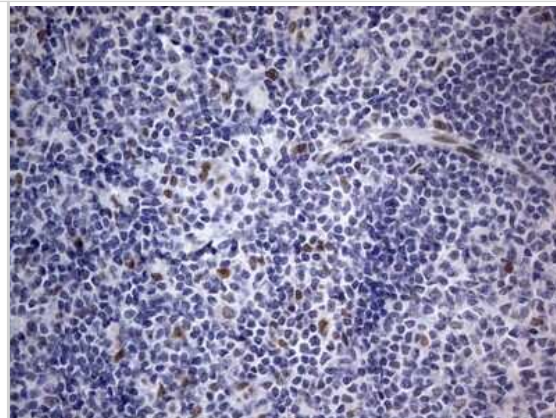
Product Application Details	
Applications	Western Blot, Immunohistochemistry-Paraffin, Immunohistochemistry
Recommended Dilutions	Western Blot 1:2000, Immunohistochemistry 1:150, Immunohistochemistry-Paraffin

Images

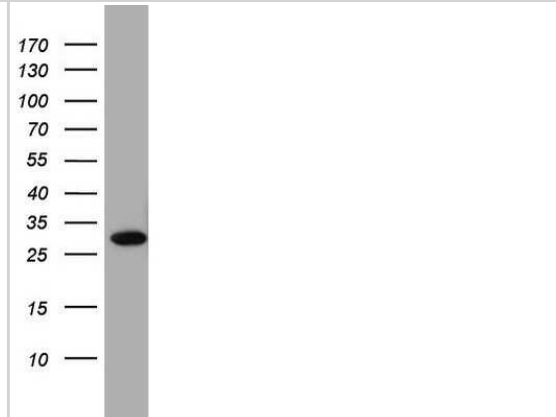
Western Blot: C14orf166B Antibody (2A4) [NBP2-46591] - Analysis of HEK293T cells were transfected with the pCMV6-ENTRY control (Left lane) or pCMV6-ENTRY C14orf166.



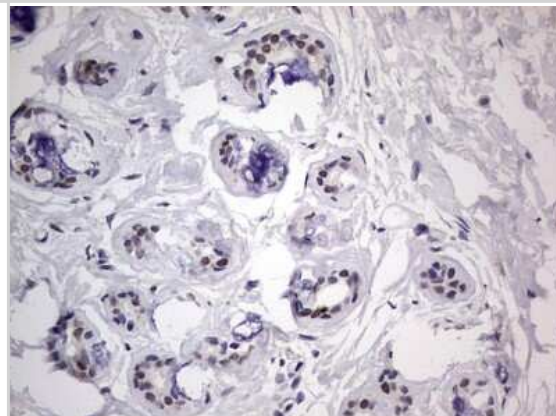
Immunohistochemistry: C14orf166B Antibody (2A4) [NBP2-46591] - Analysis of Human tonsil tissue.



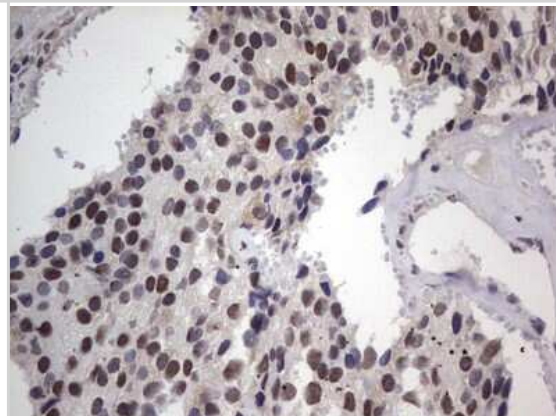
Western Blot: C14orf166B Antibody (2A4) [NBP2-46591] - Analysis of A549 cell lysate (35ug).



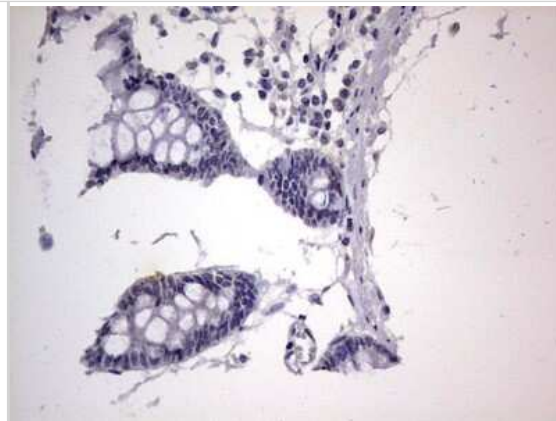
Immunohistochemistry: C14orf166B Antibody (2A4) [NBP2-46591] - Analysis of Human breast tissue.



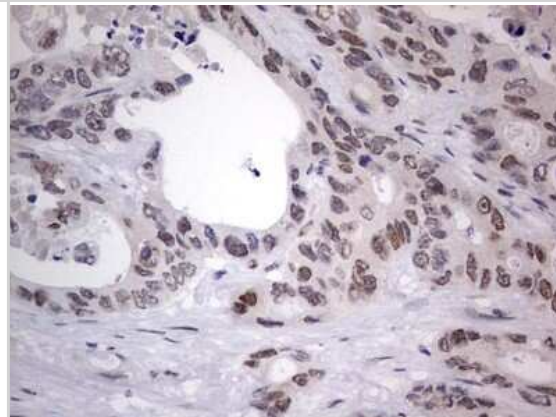
Immunohistochemistry: C14orf166B Antibody (2A4) [NBP2-46591] - Analysis of Adenocarcinoma of Human breast tissue.



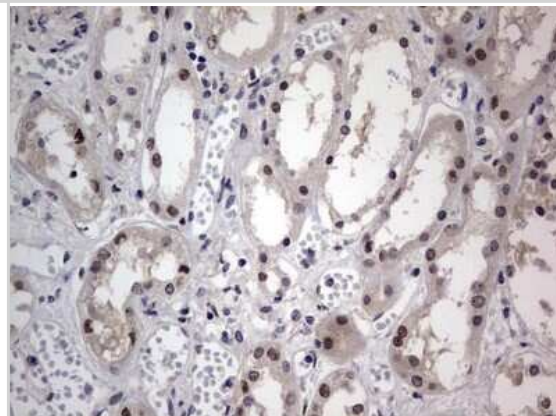
Immunohistochemistry: C14orf166B Antibody (2A4) [NBP2-46591] - Analysis of Human colon tissue.



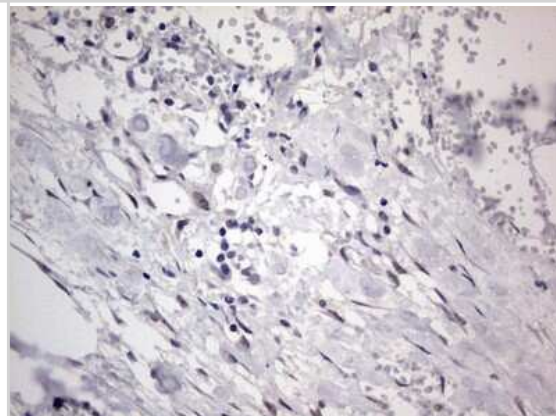
Immunohistochemistry: C14orf166B Antibody (2A4) [NBP2-46591] - Analysis of Adenocarcinoma of Human colon tissue.



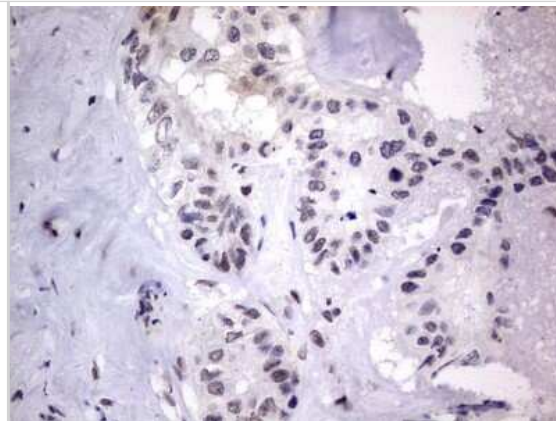
Immunohistochemistry: C14orf166B Antibody (2A4) [NBP2-46591] - Analysis of Human Kidney tissue.



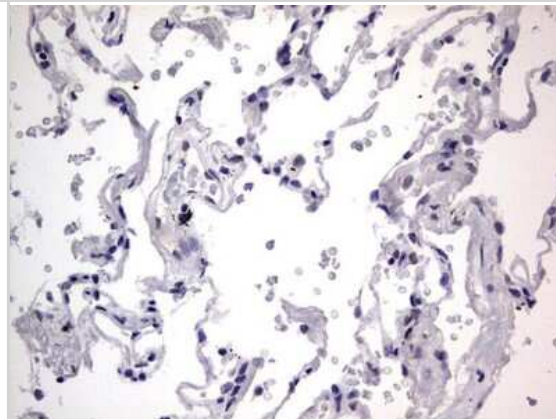
Immunohistochemistry: C14orf166B Antibody (2A4) [NBP2-46591] - Analysis of Carcinoma of Human kidney tissue.



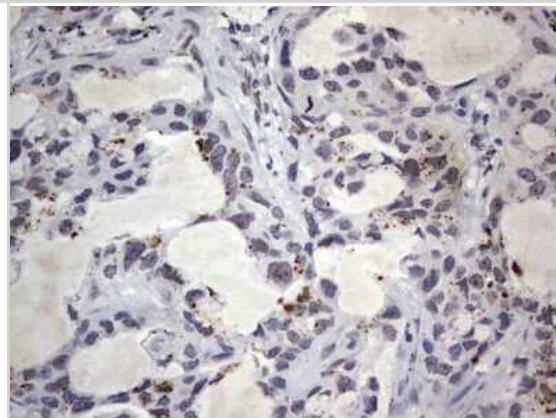
Immunohistochemistry: C14orf166B Antibody (2A4) [NBP2-46591] - Analysis of Carcinoma of Human liver tissue.



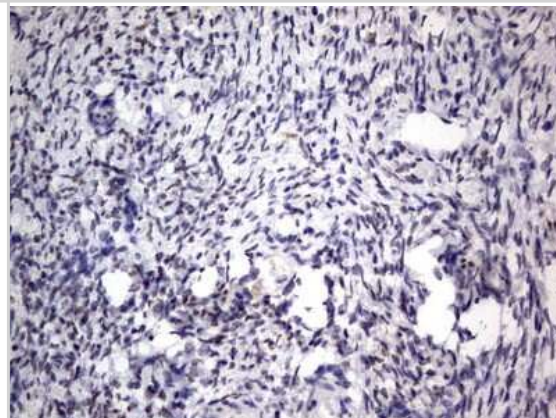
Immunohistochemistry: C14orf166B Antibody (2A4) [NBP2-46591] - Analysis of Human lung tissue.



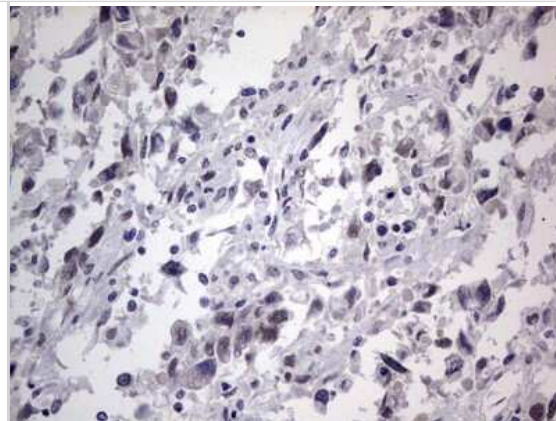
Immunohistochemistry: C14orf166B Antibody (2A4) [NBP2-46591] - Analysis of Carcinoma of Human lung tissue.



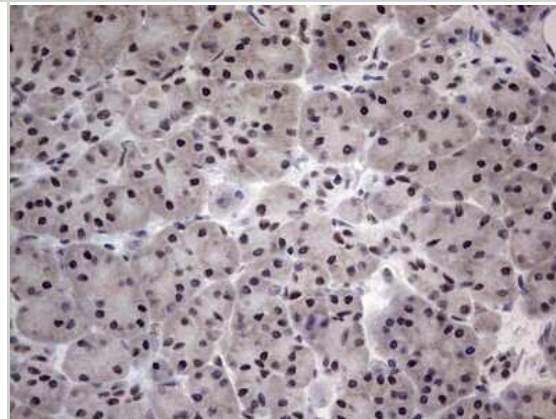
Immunohistochemistry: C14orf166B Antibody (2A4) [NBP2-46591] - Analysis of Human Ovary tissue.



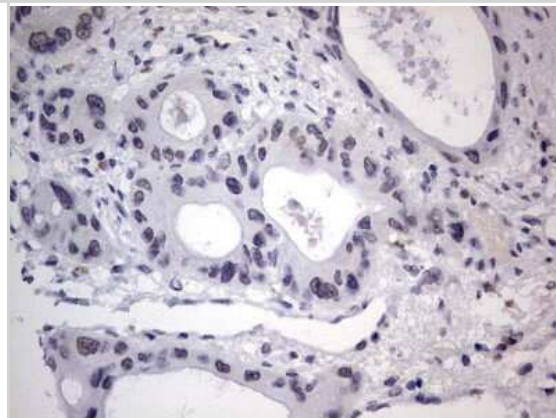
Immunohistochemistry: C14orf166B Antibody (2A4) [NBP2-46591] - Analysis of Adenocarcinoma of Human ovary tissue.



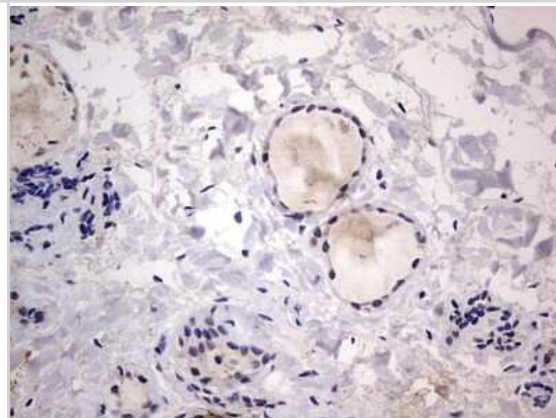
Immunohistochemistry: C14orf166B Antibody (2A4) [NBP2-46591] - Analysis of Human pancreas tissue.



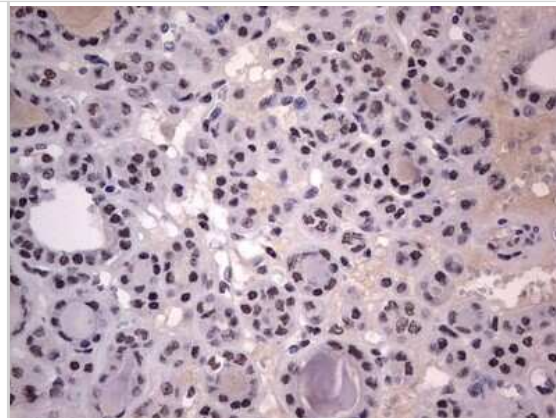
Immunohistochemistry: C14orf166B Antibody (2A4) [NBP2-46591] - Analysis of Carcinoma of Human pancreas tissue.



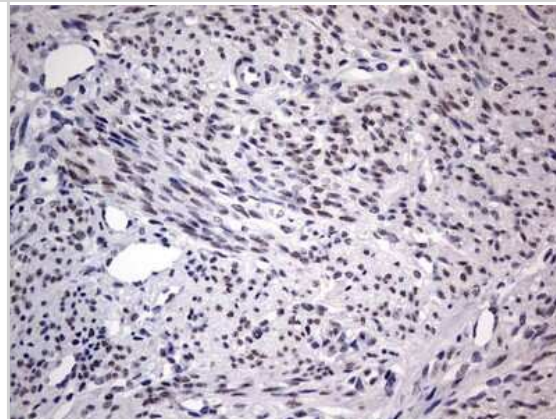
Immunohistochemistry: C14orf166B Antibody (2A4) [NBP2-46591] - Analysis of Human thyroid tissue.



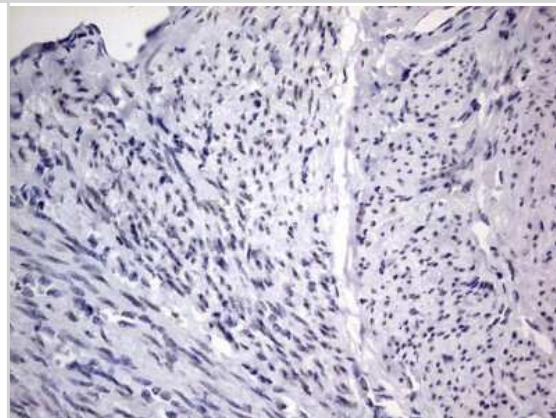
Immunohistochemistry: C14orf166B Antibody (2A4) [NBP2-46591] - Analysis of Carcinoma of Human thyroid tissue.



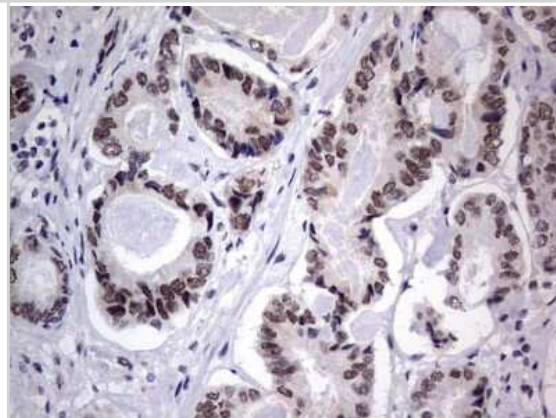
Immunohistochemistry: C14orf166B Antibody (2A4) [NBP2-46591] - Analysis of Human endometrium tissue.



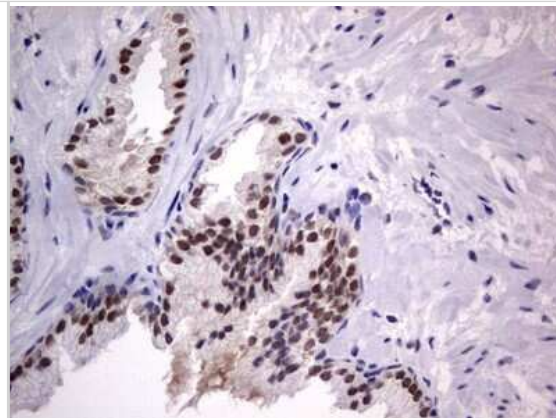
Immunohistochemistry: C14orf166B Antibody (2A4) [NBP2-46591] - Analysis of Adenocarcinoma of Human endometrium tissue.



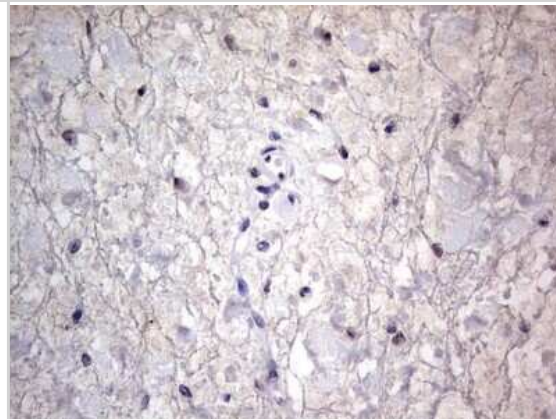
Immunohistochemistry: C14orf166B Antibody (2A4) [NBP2-46591] - Analysis of Human prostate tissue.



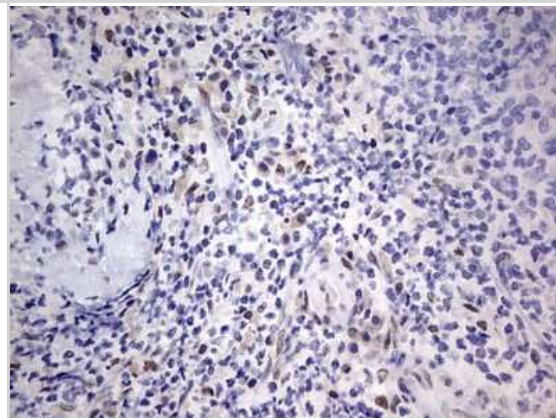
Immunohistochemistry: C14orf166B Antibody (2A4) [NBP2-46591] - Analysis of Carcinoma of Human prostate tissue.



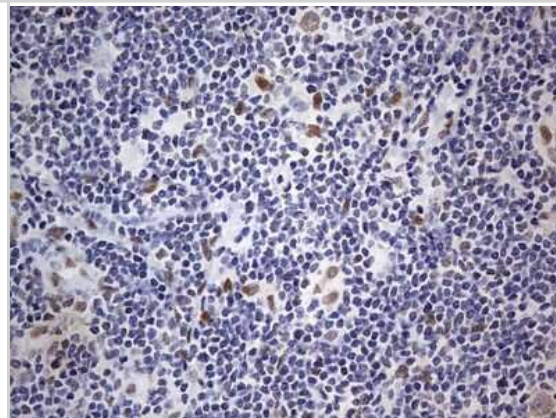
Immunohistochemistry: C14orf166B Antibody (2A4) [NBP2-46591] - Analysis of Human bladder tissue.



Immunohistochemistry: C14orf166B Antibody (2A4) [NBP2-46591] - Analysis of Human lymph node tissue.



Immunohistochemistry: C14orf166B Antibody (2A4) [NBP2-46591] - Analysis of Human lymphoma tissue.





Novus Biologicals USA

10730 E. Briarwood Avenue
Centennial, CO 80112
USA
Phone: 303.730.1950
Toll Free: 1.888.506.6887
Fax: 303.730.1966
nb-customerservice@bio-techne.com

Bio-Techne Canada

21 Canmotor Ave
Toronto, ON M8Z 4E6
Canada
Phone: 905.827.6400
Toll Free: 855.668.8722
Fax: 905.827.6402
canada.inquires@bio-techne.com

Bio-Techne Ltd

19 Barton Lane
Abingdon Science Park
Abingdon, OX14 3NB, United Kingdom
Phone: (44) (0) 1235 529449
Free Phone: 0800 37 34 15
Fax: (44) (0) 1235 533420
info.EMEA@bio-techne.com

General Contact Information

www.novusbio.com
Technical Support: nb-technical@bio-techne.com
Orders: nb-customerservice@bio-techne.com
General: novus@novusbio.com

Products Related to NBP2-46591

NBP2-33376H	Blue Marker Antibody (6F4-F6) [HRP]
HAF007	Goat anti-Mouse IgG Secondary Antibody [HRP]
NB7539	Goat anti-Mouse IgG (H+L) Secondary Antibody [HRP]
NBP1-97005-0.5mg	Mouse IgG1 Isotype Control (MG1)

Limitations

This product is for research use only and is not approved for use in humans or in clinical diagnosis. Primary Antibodies are guaranteed for 1 year from date of receipt.

For more information on our 100% guarantee, please visit www.novusbio.com/guarantee

Earn gift cards/discounts by submitting a review: www.novusbio.com/reviews/submit/NBP2-46591

Earn gift cards/discounts by submitting a publication using this product:
www.novusbio.com/publications

