

# Product Datasheet

## CMP kinase Antibody (OTI1A1) NBP2-46313

Unit Size: 0.1 ml

Store at -20C. Avoid freeze-thaw cycles.

[www.novusbio.com](http://www.novusbio.com)



[technical@novusbio.com](mailto:technical@novusbio.com)

Protocols, Publications, Related Products, Reviews, Research Tools and Images at:  
[www.novusbio.com/NBP2-46313](http://www.novusbio.com/NBP2-46313)

Updated 9/20/2021 v.20.1

Earn rewards for product  
reviews and publications.

Submit a publication at [www.novusbio.com/publications](http://www.novusbio.com/publications)

Submit a review at [www.novusbio.com/reviews/destination/NBP2-46313](http://www.novusbio.com/reviews/destination/NBP2-46313)



**NBP2-46313**

CMP kinase Antibody (OTI1A1)

**Product Information**

<b>Unit Size</b>	0.1 ml
<b>Concentration</b>	1 mg/ml
<b>Storage</b>	Store at -20C. Avoid freeze-thaw cycles.
<b>Clonality</b>	Monoclonal
<b>Clone</b>	OTI1A1
<b>Preservative</b>	0.02% Sodium Azide
<b>Isotype</b>	IgG2b
<b>Purity</b>	Immunogen affinity purified
<b>Buffer</b>	PBS (pH 7.3), 1.0% BSA and 50% Glycerol
<b>Target Molecular Weight</b>	25.7 kDa

**Product Description**

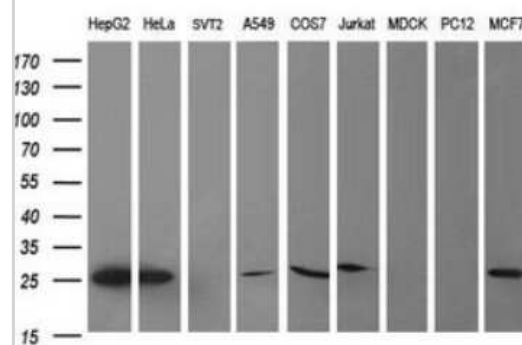
<b>Host</b>	Mouse
<b>Gene ID</b>	51727
<b>Gene Symbol</b>	CMPK1
<b>Species</b>	Human, Mouse, Rat, Monkey
<b>Reactivity Notes</b>	Please note that this antibody is reactive to Mouse and derived from the same host, Mouse. Mouse-On-Mouse blocking reagent may be needed for IHC and ICC experiments to reduce high background signal. You can find these reagents under catalog numbers PK-2200-NB and MP-2400-NB. Please contact Technical Support if you have any questions.
<b>Immunogen</b>	Full length human recombinant protein of human CMPK1(NP_057392) produced in HEK293T cell.

**Product Application Details**

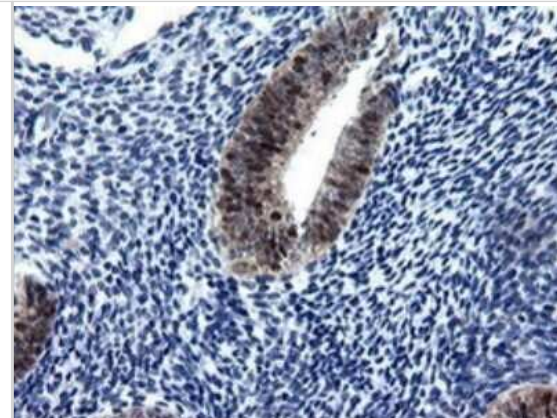
<b>Applications</b>	Western Blot, Immunocytochemistry/ Immunofluorescence, Immunohistochemistry, Immunofluorescence
<b>Recommended Dilutions</b>	Western Blot 1:2000, Immunohistochemistry 1:150, Immunocytochemistry/ Immunofluorescence 1:100, Immunofluorescence 1:100

**Images**

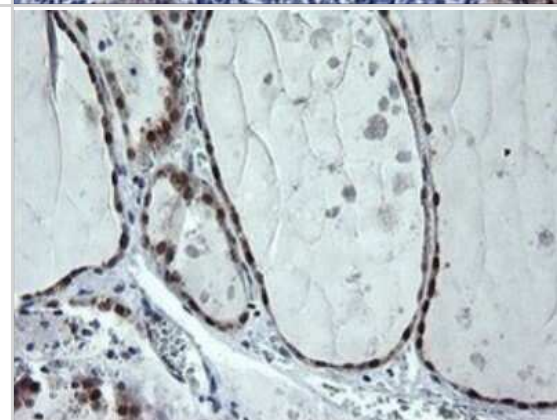
Western Blot: CMP kinase Antibody (OTI1A1) [NBP2-46313] - Analysis of extracts (35ug) from 9 different cell lines (HepG2: human; HeLa: human; SVT2: mouse; A549: human; COS7: monkey; Jurkat: human; MDCK: canine; PC12: rat; MCF7: human).



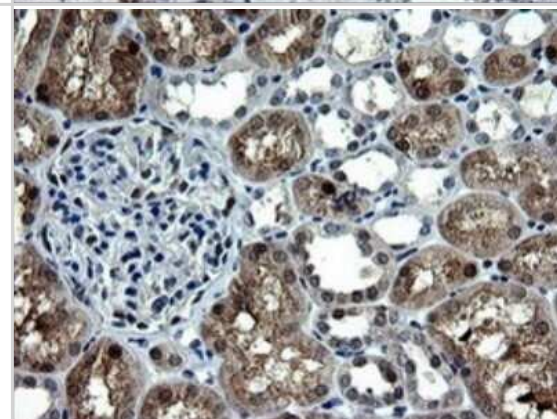
Immunohistochemistry: CMP kinase Antibody (OTI1A1) [NBP2-46313] - Analysis of Human endometrium tissue.



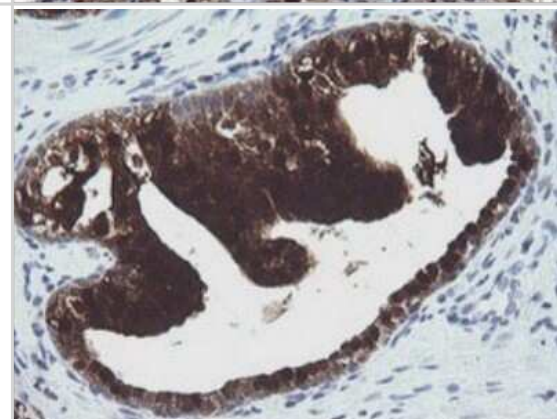
Immunohistochemistry: CMP kinase Antibody (OTI1A1) [NBP2-46313] - Analysis of Human thyroid tissue.



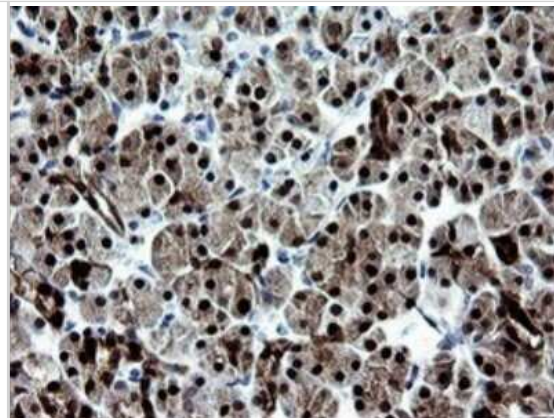
Immunohistochemistry: CMP kinase Antibody (OTI1A1) [NBP2-46313] - Analysis of Human Kidney tissue.



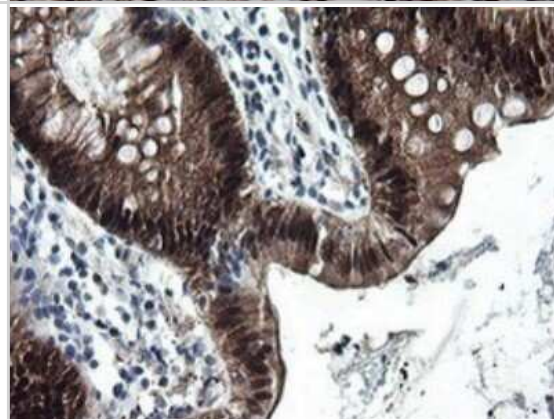
Immunohistochemistry: CMP kinase Antibody (OTI1A1) [NBP2-46313] - Analysis of Carcinoma of Human prostate tissue.



Immunohistochemistry: CMP kinase Antibody (OTI1A1) [NBP2-46313] - Analysis of Human pancreas tissue.



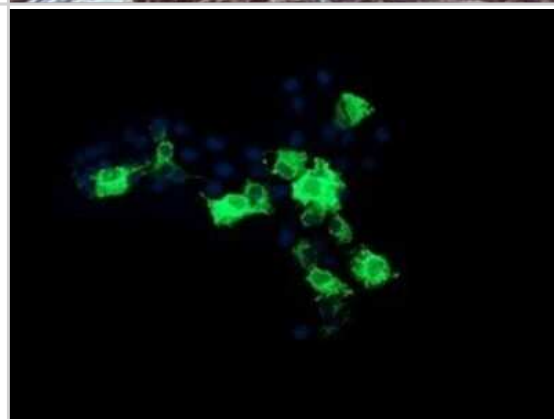
Immunohistochemistry: CMP kinase Antibody (OTI1A1) [NBP2-46313] - Analysis of Human colon tissue within the normal limits using CMPK1 mouse monoclonal antibody.



Immunohistochemistry: CMP kinase Antibody (OTI1A1) [NBP2-46313] - Analysis of Adenocarcinoma of Human colon tissue.



Immunofluorescence: CMP kinase Antibody (OTI1A1) [NBP2-46313] - Analysis of COS7 cells transiently transfected by pCMV6-ENTRY CMP kinase.







### **Novus Biologicals USA**

10730 E. Briarwood Avenue  
Centennial, CO 80112  
USA  
Phone: 303.730.1950  
Toll Free: 1.888.506.6887  
Fax: 303.730.1966  
nb-customerservice@bio-techne.com

### **Bio-Techne Canada**

21 Canmotor Ave  
Toronto, ON M8Z 4E6  
Canada  
Phone: 905.827.6400  
Toll Free: 855.668.8722  
Fax: 905.827.6402  
canada.inquires@bio-techne.com

### **Bio-Techne Ltd**

19 Barton Lane  
Abingdon Science Park  
Abingdon, OX14 3NB, United Kingdom  
Phone: (44) (0) 1235 529449  
Free Phone: 0800 37 34 15  
Fax: (44) (0) 1235 533420  
info.EMEA@bio-techne.com

### **General Contact Information**

[www.novusbio.com](http://www.novusbio.com)  
Technical Support: nb-technical@bio-techne.com  
Orders: nb-customerservice@bio-techne.com  
General: novus@novusbio.com

### **Products Related to NBP2-46313**

---

HAF007	Goat anti-Mouse IgG Secondary Antibody [HRP]
NB720-B	Rabbit anti-Mouse IgG (H+L) Secondary Antibody [Biotin]
NBP2-27231	Mouse IgG2b Isotype Control (MPC-11)
NBP1-51052-0.1mg	Recombinant Human CMP kinase His Protein

---

### **Limitations**

This product is for research use only and is not approved for use in humans or in clinical diagnosis. Primary Antibodies are guaranteed for 1 year from date of receipt.

For more information on our 100% guarantee, please visit [www.novusbio.com/guarantee](http://www.novusbio.com/guarantee)

Earn gift cards/discounts by submitting a review: [www.novusbio.com/reviews/submit/NBP2-46313](http://www.novusbio.com/reviews/submit/NBP2-46313)

Earn gift cards/discounts by submitting a publication using this product:  
[www.novusbio.com/publications](http://www.novusbio.com/publications)

